

**Virginia Department of Social Services**

*people helping people*

Roundtable with Virginia's Tribes

*December 16, 2021*



Present:

Brenda Sampe, VDSS

Penny Wynn, Chickahominy Eastern Division

Reggie Tupponce, Upper Mattaponi

Elizabeth Lee, VDSS

Mimi Kennedy, VDSS

Morgan Nelson, VDSS

Jewel Wynn, VDSS

Garrett Jones, VDSS

Connie Lovelace, Upper Mattaponi

Yvonne Epps-Giddings, Nottoway Tribe

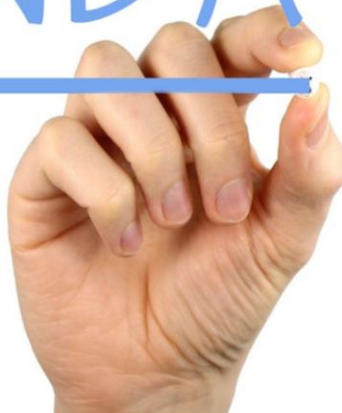
Kimberly Huhn-Murphy, ACF

Susann Brown, Chickahominy Tribe

Lindsey Johnson, Chickahominy Tribe

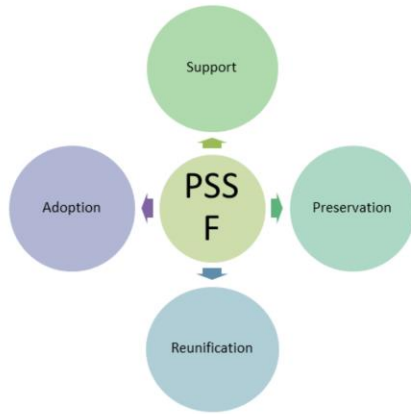
# AGENDA

- Welcome/Introductions
- Overview of PSSF (Promoting Safe and Stable Families)
- ICWA eLearning Update and Questions for Discussion
- Any Updates from Virginia's Tribes
- Next Roundtable
- Plus/Delta





Recording of this portion of meeting found here: <https://youtu.be/o9--Pk3-w1E>



# PSSF Objectives

6



## Support

- To prevent abuse and neglect through community-based and supportive family services



## Preservation

- To prevent the unnecessary separation of children from their families through preservation services



## Reunification

- To minimize the length of time children remain in foster care through reunification services



## Adoption

- To promote permanent placements and support life-long family connections for children and youth through adoption promotion and post permanency support services



## Family Support Services

7

- Promote the safety and well-being of children and families.
- Increase the strength and stability of families
- Increase parents' confidence and competence in their parenting abilities.
- Afford children a safe, stable, and supportive family environment.
- Strengthen parental relationships and promote healthy marriages.
- Enhance child development, including through mentoring



- Service programs designed to help children-
  - Return to their families from which they have been removed; or
  - Be placed for adoption, with a legal guardian, or, in some other planned, permanent living arrangement;
  - At risk of foster care placement remain safely with their families.
  
- Service programs designed to provide:
  - Follow-up care to families to whom a child has been returned after a foster care placement
  - Respite care of children to provide temporary relief
  - Services designed to improve parenting skills
  - Infant safe haven programs





## Family Reunification Services

9

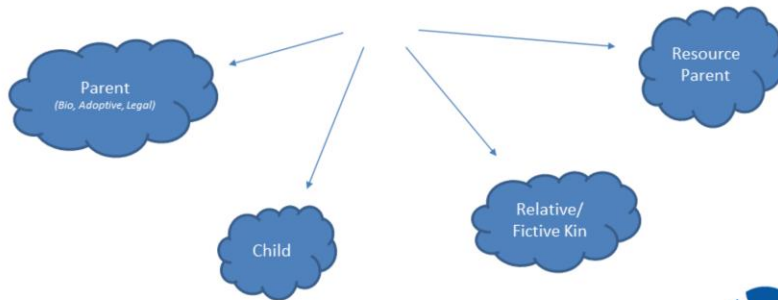
- Individual, group, and family counseling.
- Inpatient, residential, or outpatient substance abuse treatment services.
- Mental health services.
- Assistance to address domestic violence.
- Temporary child care and therapeutic services for families
- Peer-to-peer mentoring and support groups
- Access to and visitation of children by parents and siblings.
- Transportation to or from services



- Adoption promotion and support are services and activities designed to encourage more adoptions out of the foster care system, when adoptions promote the best interests of children, including such activities as pre and post adoptive services and activities designed to expedite the adoption process and support adoptive families.



All Involved and invested in the successful outcomes of children and their families

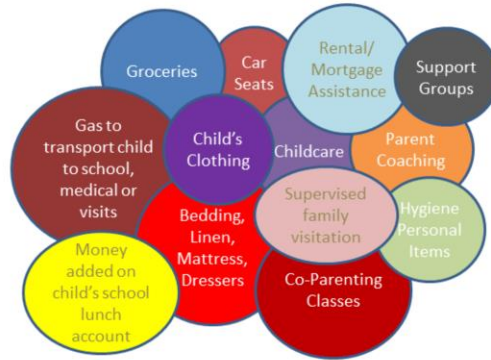


## PSSF Service Categories

12

After-School Activities	Assessments	Childcare	Counseling/ Therapy	Early Intervention
Educational Support	Employment Training	Financial Management	Housing/ Material Assistance	Intensive In-Home
Leadership & Social Skills	Mentoring	Supervised Visitation	Parent Education	Parent Skills Training
Respite Care	Self Help Groups	Substance Use & Recovery	Socialization & Recreation	Transportation





After-School  
Activities

Counseling/  
Therapy

Tutoring,  
Mentoring,  
Homework  
Support,

Recreational  
activities such as  
sports, games,  
camps, clubs

Expressive Arts  
therapy such as  
music, dance,  
writing, art, equine

GED classes, SAT  
preparation,  
College preparation

Support Groups

Supervised Visits

Non traditional  
therapy



- Support groups
- Support for transracial/ transcultural adoptions
- Therapy: Individual, family, marital
- Parent Education: special needs and adoptive parenting
- Mental Health Services, both in-home and outpatient
- Respite Care
- Short-term financial assistance when needed
- Home Studies
- Concrete Services



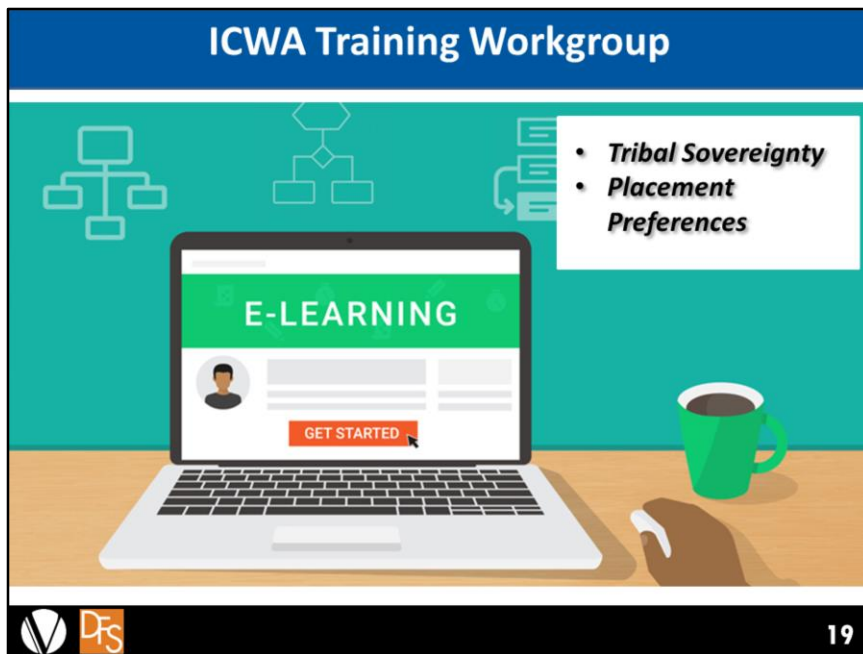
- 
- Five-Year plan
  - Community needs assessment
  - 20% of total allocation per category unless waived and approved
  - 15.5% local match
  - Renewal applications
  - Quarterly & end of year reports
  - Onsite/ desk reviews



- Service-Specific Requests for Applications (RFAs)
- Funding Application
- Community needs assessment
- Quarterly & end of year reports
- Onsite/ desk reviews







An ICWA training called an eLearning is in the process of being developed. The small workgroup that met suggested that our tribes provide input on some of the curriculum's content.

## Defining/Understanding Tribal Sovereignty

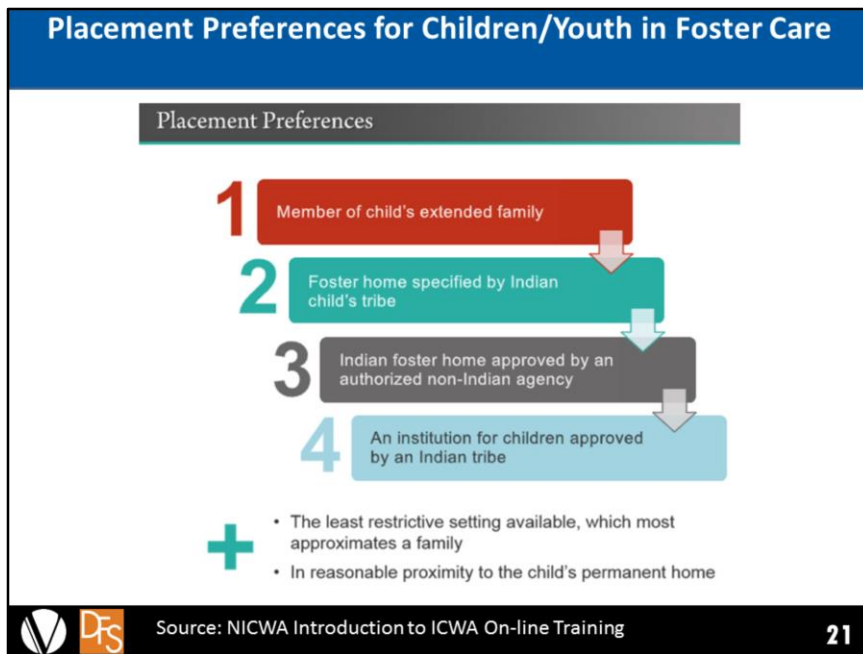
“Tribal sovereignty refers to the right of American Indians and Alaska Natives to govern themselves. The U.S. Constitution recognizes Indian tribes as distinct governments and they have, with a few exceptions, the same powers as federal and state governments to regulate their internal affairs. Sovereignty for tribes includes the right to establish their own form of government, determine membership requirements, enact legislation and establish law enforcement and court systems.”

“Tribal sovereignty ensures that any decisions about the tribes with regard to their property and citizens are made with their participation and consent.”



How do tribes feel about this definition/explanation of tribal sovereignty? Is there anything else that our tribal leaders would like to see emphasized?

Reggie: UN group on indigenous issues has a wider thought around sovereignty means – under construct of US government, this definition does seem to meet needs. He will bring this to his leadership to see what they think about it.



One of the other topics that will be covered in the eLearning is around placement preferences of Native children/youth in foster care. This is from NICWA's Intro to ICWA online training. Stressed that the tribe has the right to change the placement preference. What have been the experiences and preferred engagement from states/counties regarding placement preferences for Native children in foster care? Is there any specific information that the group would like shared in the training?

Reggie: Gave an example of non-native mother's family taking in child, this was what the family wanted; the tribe weighed in and gave opinion; gave their preference; having that flexibility – tribes perspective – our regions/communities are close knit – families know each other

Yvonne: Please ask the rest of the tribes about contributing to the eLearning around ICWA, whether it's a story or their voice

## Questions, Comments, Ideas and Updates!



Reggie had noted that the Upper Mattaponi are providing home health care; they received a grant to provide other services; housing; realizing that housing needs are often the symptom, not the problem. Concern around capacity; staff wear several hats.

Next Meeting: March 2022

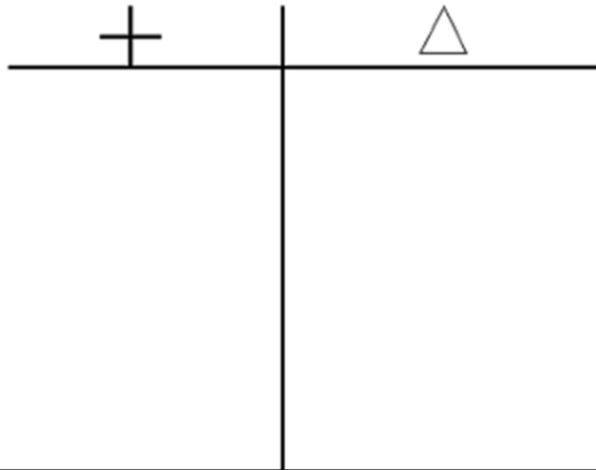
23



End of March – ask again for meeting days of week or timeframes? AVOID?

Participants in today's meeting asked to avoid Mondays and Thursdays

Yvonne: Suggest putting out a poll to everyone else to see what preferences/avoid dates are



Plus: Presentation  
Delta: none





VIRGINIA DEPARTMENT OF  
SOCIAL SERVICES



Division of  
Family Services