

**DEPT. OF SOCIAL SERVICES-PAYMENTS AND AVERAGE GRANTS FOR WELFARE PROGRAMS**

	Sep '16	Aug '16	INC./DEC. PRI MON	% DIFF PRI MON	YTD TOTAL	Sep '15	INC/DEC PRIOR YR.	% INC/DEC PRIOR YR.
<b>AUXILIARY GRANTS PROGRAMS</b>								
RECIPIENTS	3,920	4,040	(120)	-3%	-	3,844	76	2%
PAYMENTS**	\$1,620,082	\$1,633,002	(\$12,921)	-1%	\$4,954,407	\$1,834,146	(\$214,065)	-12%
AVERAGE GRANT	\$413	\$404	\$9	2%	-	\$477	(\$64)	-13%
<b>ADULT FOSTER CARE</b>								
RECIPIENTS	35	43	(8)	-19%	-	48	(13)	-27%
PAYMENTS	\$13,409	\$13,986	(\$578)	-4%	\$44,860	\$20,597	(\$7,188)	-35%
AVERAGE GRANT	\$383	\$325	\$58	18%	-	\$429	(\$46)	-11%
<b>TEMPORARY ASSISTANCE FOR NEEDY FAMILIES</b>								
RECIPIENTS-TOTAL	48,931	48,876	55	0%	-	54,456	(5,580)	-10%
TANF	44,437	44,392	45	0%	44,328	49,454	(5,017)	-10%
TANF-UNEMPLOYED PARENTS	4,494	4,484	10	0%	4,495	5,002	(508)	-10%
1/EMERGENCY ASSISTANCE	0	0	0	0%	0	3	(3)	-100%
PAYMENTS-TOTAL	\$6,457,452	\$6,493,002	(\$35,550)	-1%	\$6,425,250	\$6,826,851	(\$369,399)	-5%
TANF	\$5,961,349	\$5,989,133	(\$27,784)	0%	\$5,930,835	\$6,298,182	(\$336,833)	-5%
TANF-UNEMPLOYED PARENTS	\$496,103	\$503,870	(\$7,766)	-2%	\$494,415	\$528,064	(\$31,960)	-6%
EMERGENCY ASSISTANCE	\$0	\$0	\$0	0%	\$0	\$606	(\$606)	-100%
AVERAGE GRANT-TOTAL	\$132	\$133	(\$1)	-1%	-	\$125	\$7	5%
AVERAGE MONEY PAYMENTS	\$134	\$135	(\$1)	-1%	\$134	\$127	\$7	5%
AVERAGE TANF-UNEMPLOYED PARENTS	\$110	\$112	(\$2)	-2%	\$110	\$106	\$5	5%
AVERAGE EMERGENCY ASSISTANCE	\$0	\$0	\$0	0%	\$0	\$202	(\$202)	-100%
<b>TITLE IV-E</b>								
ADOPTION SUBSIDY- RECIPIENTS	9,711	9,250	461	5%	-	8,431	1,280	15%
ADOPTION SUBSIDY - PAYMENTS	\$7,868,096	\$7,776,831	\$91,265	1%	\$22,728,578	\$6,768,009	\$1,100,087	16%
AVERAGE ADOPTION SUBSIDY	\$810	\$841	(\$31)	-4%	-	\$803	\$7	1%
<b>SPECIAL NEEDS ADOPTION</b>								
SPECIAL NEEDS ADOPTION - RECIPIENTS	3,179	3,279	(100)	-3%	-	3,909	(730)	-19%
SPECIAL NEEDS ADOPTION - PAYMENTS	\$2,338,967	\$2,648,905	(\$309,939)	-12%	\$7,426,562	\$2,990,867	(\$651,901)	-22%
AVERAGE SPECIAL NEEDS ADOPTION	\$736	\$808	(\$72)	-9%	-	\$765	(\$29)	-4%
<b>GENERAL RELIEF</b>								
PAYMENTS-TOTAL	\$158,792	\$176,903	(\$18,112)	-10%	\$526,130	\$124,402	\$34,390	28%

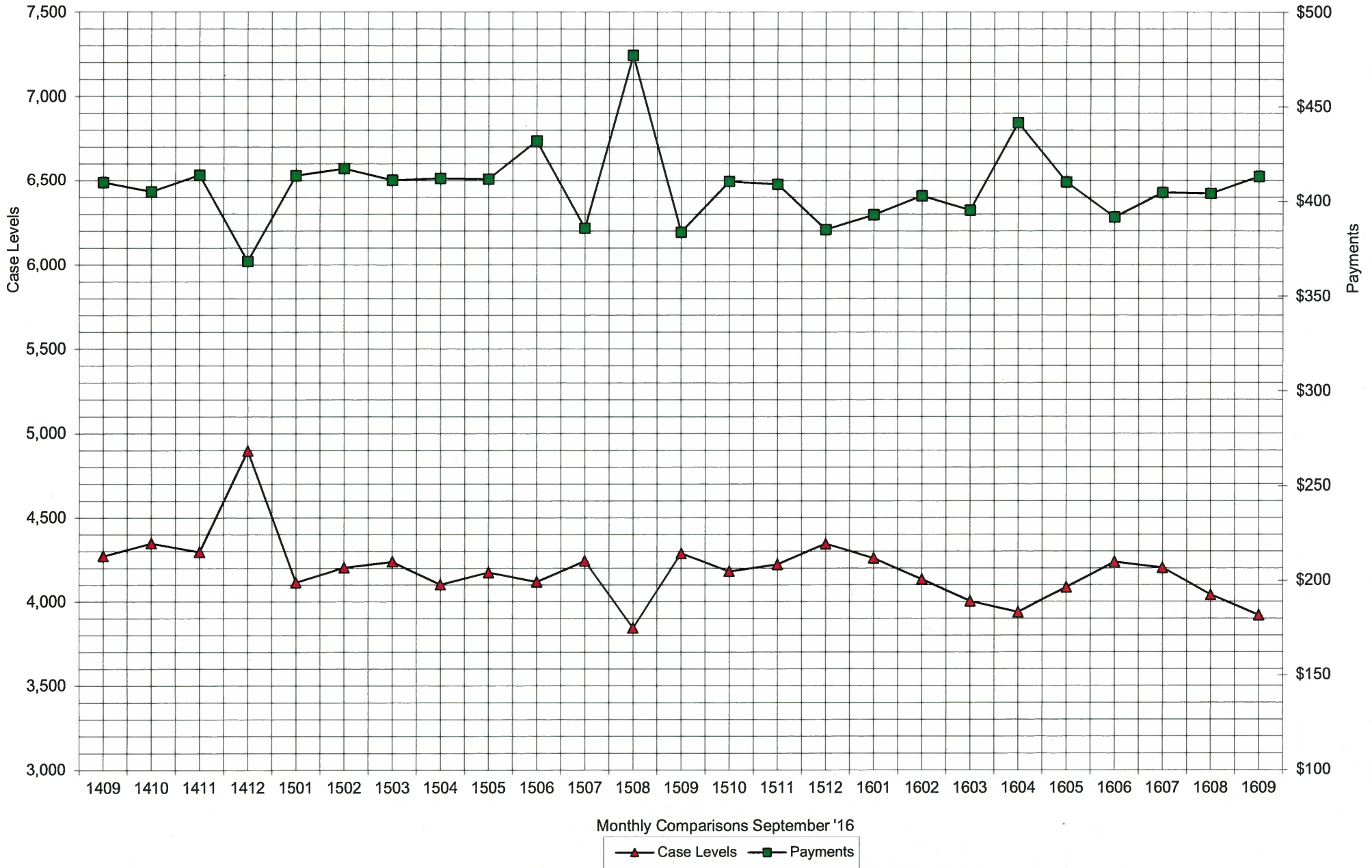
1/ INCLUDES 0 RECIPIENTS IN AUGUST AND 0 IN JULY WHO ALSO REC'D MONEY PAYMENTS

\*\* AUXILIARY GRANT EXPENDITURES DO NOT INCLUDE THE LOCAL SHARE OF 20%

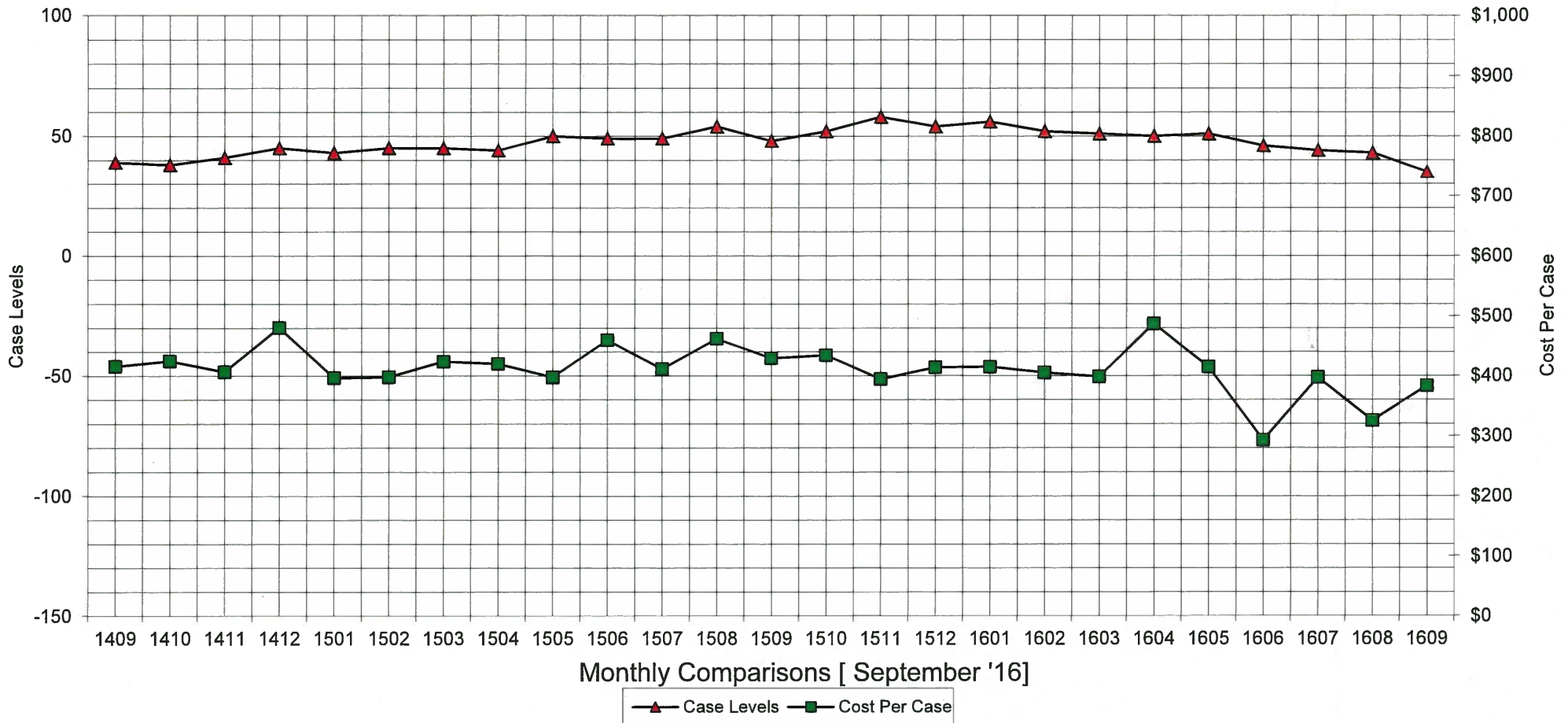
ARRA amounts are included in the payment amounts

General Disclaimer: Unless specifically stated otherwise, case count numbers indicated in this report(s) stem from amounts entered by local personnel into applicable ADAPT and LASER systems; therefore, all reviewers/users of this report understand that the accuracy of such case count numbers is contingent on the respective numbers entered by local personnel. Any subsequent liabilities associated with incorrect amounts being entered into the noted systems rests solely with each locality. Effective March 2008 a difference method of calculating TANF & TANF-UP information was established.

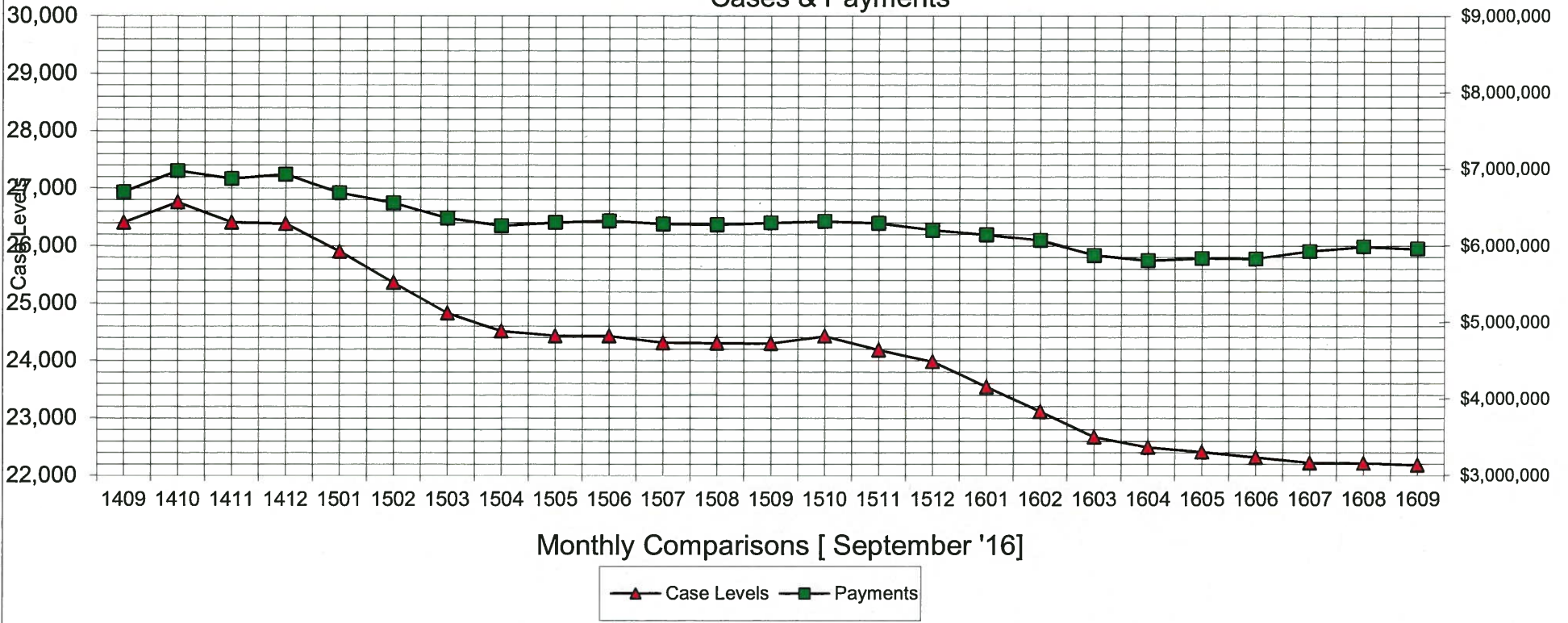
### Auxiliary Grants Programs Cases & Payments



### Adult Foster Care Cases vs Cost-Per-Case



# TANF Cases & Payments



# GENERAL RELIEF Payments

