

DEPT. OF SOCIAL SERVICES-PAYMENTS AND AVERAGE GRANTS FOR WELFARE PROGRAMS

| | Aug '14 | July '14 | INC/DEC. PRI MON | % DIFF PRI MON | **YTD TOTAL | Aug '13 | INC/DEC PRIOR YR. | % INC/DEC PRIOR YR. |
|--|-------------|-------------|---------------------|----------------------|----------------|-------------|----------------------|---------------------------|
| AUXILIARY GRANTS PROGRAMS | | | | | | | | |
| RECIPIENTS | 4,454 | 4,483 | (29) | -1% | 8,937 | 4,524 | (70) | -2% |
| PAYMENTS | \$1,757,767 | \$1,782,081 | (\$24,294) | -1% | \$3,539,828 | \$1,820,103 | (\$62,338) | -3% |
| AVERAGE GRANT | \$395 | \$398 | (\$3) | -1% | \$398 | \$402 | (\$8) | -2% |
| ADULT FOSTER CARE | | | | | | | | |
| RECIPIENTS | 30 | 27 | 3 | 11% | 57 | 28 | 4 | 15% |
| PAYMENTS | \$12,758 | \$10,214 | \$2,542 | 25% | \$22,970 | \$13,371 | (\$815) | -5% |
| AVERAGE GRANT | \$425 | \$378 | \$47 | 12% | \$403 | \$514 | (\$89) | -17% |
| TEMPORARY ASSISTANCE FOR NEEDY FAMILIES | | | | | | | | |
| RECIPIENTS-TOTAL | 60,186 | 59,936 | 250 | 0% | 118,872 | 67,790 | (7,853) | -12% |
| TANF | 54,661 | 54,452 | 209 | 0% | 108,904 | 61,859 | (7,198) | -12% |
| TANF-UNEMPLOYED PARENTS | 5,525 | 5,484 | 41 | 1% | 10,968 | 5,931 | (406) | -7% |
| 1/EMERGENCY ASSISTANCE | 2 | 1 | 1 | 100% | 3 | 11 | (9) | -82% |
| PAYMENTS-TOTAL | \$7,354,260 | \$7,353,440 | \$820 | 0% | \$14,706,599 | \$8,253,400 | (\$899,140) | -11% |
| TANF | \$6,777,645 | \$6,774,140 | \$3,506 | 0% | \$13,548,279 | \$7,637,607 | (\$859,961) | -11% |
| TANF-UNEMPLOYED PARENTS | \$578,397 | \$578,801 | (\$2,404) | 0% | \$1,157,802 | \$614,834 | (\$38,437) | -6% |
| EMERGENCY ASSISTANCE | \$218 | \$500 | (\$282) | -56% | \$718 | \$959 | (\$741) | -77% |
| AVERAGE GRANT-TOTAL | \$122 | \$123 | (\$0) | 0% | \$123 | \$122 | \$0 | 0% |
| AVERAGE MONEY PAYMENTS | \$124 | \$124 | (\$0) | 0% | \$124 | \$123 | \$1 | 0% |
| AVERAGE TANF-UNEMPLOYED PARENTS | \$104 | \$106 | (\$1) | -1% | \$106 | \$104 | \$1 | 1% |
| AVERAGE EMERGENCY ASSISTANCE | \$109 | \$500 | (\$391) | -78% | \$239 | \$87 | \$22 | 25% |
| TITLE IV-E | | | | | | | | |
| ADOPTION SUBSIDY- RECIPIENTS | 8,546 | 8,645 | (99) | -1% | 17,191 | 7,826 | 720 | 9% |
| ADOPTION SUBSIDY - PAYMENTS | \$6,641,939 | \$6,393,737 | \$248,202 | 4% | \$13,035,675 | \$6,059,310 | \$582,629 | 10% |
| AVERAGE ADOPTION SUBSIDY | \$777 | \$740 | \$38 | 5% | \$758 | \$774 | \$3 | 0% |
| SPECIAL NEEDS ADOPTION | | | | | | | | |
| SPECIAL NEEDS ADOPTION - RECIPIENTS | 3,997 | 4,230 | (233) | -6% | 8,227 | 4,080 | (83) | -2% |
| SPECIAL NEEDS ADOPTION - PAYMENTS | \$2,990,112 | \$2,943,295 | \$46,817 | 2% | \$5,933,406 | \$3,302,248 | (\$312,136) | -9% |
| AVERAGE SPECIAL NEEDS ADOPTION | \$748 | \$698 | \$52 | 8% | \$721 | \$809 | (\$81) | -8% |
| GENERAL RELIEF | | | | | | | | |
| PAYMENTS-TOTAL | \$180,335 | \$176,942 | \$3,393 | 2% | \$357,277 | \$187,837 | (\$7,502) | -4% |

1/ INCLUDES 2 RECIPIENTS IN AUGUST AND 1 IN JULY WHO ALSO REC'D MONEY PAYMENTS

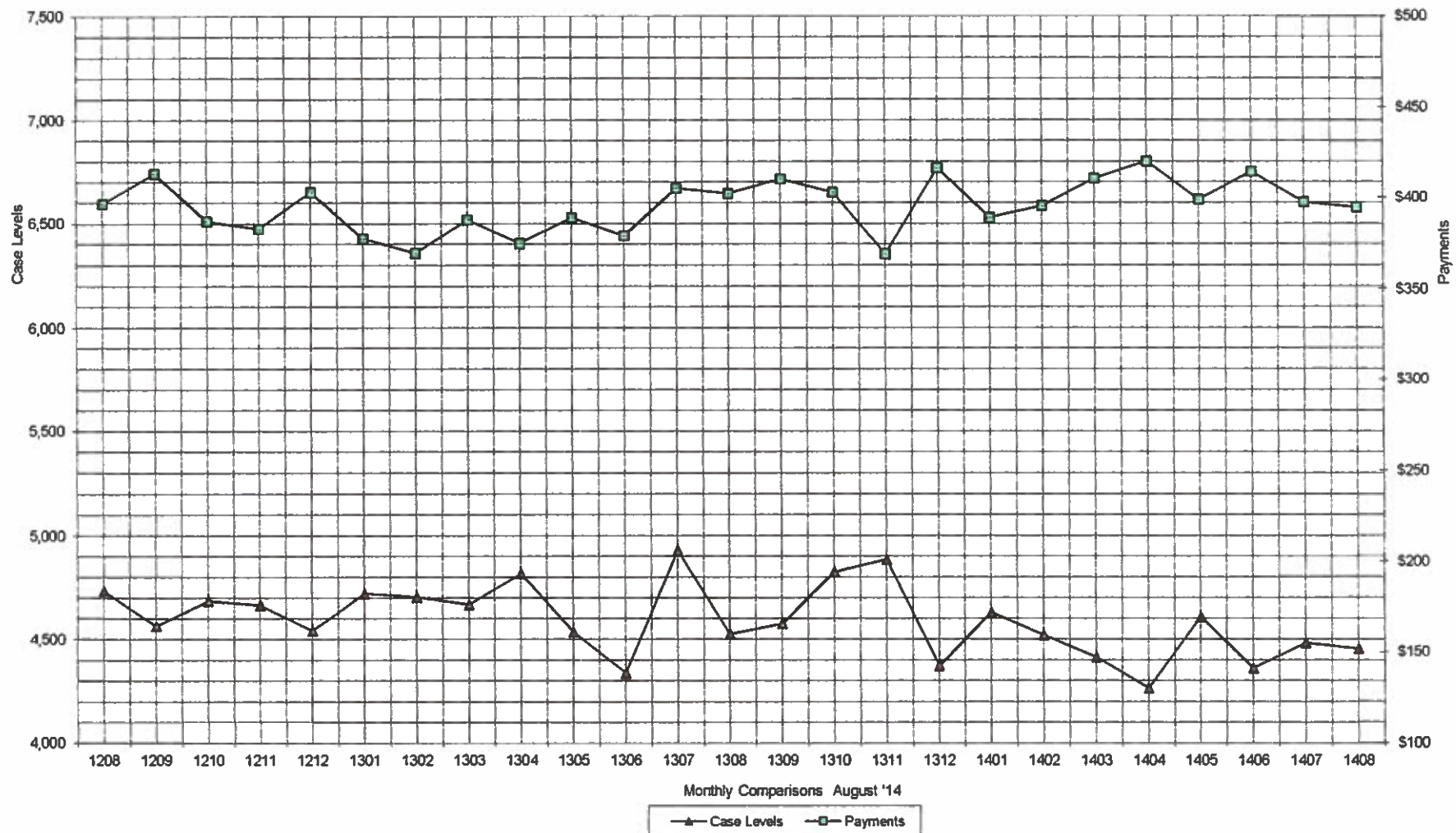
** YEAR TO DATE TOTAL. THE RECIPIENT FIGURES DO NOT REPRESENT TRUE COUNTS AS THE RECIPIENTS ARE GENERALLY THE SAME EVERY MONTH. THE YEAR TO DATE DOLLAR FIGURES ARE ACCURATE.

ARRA amounts are included in the payment amounts

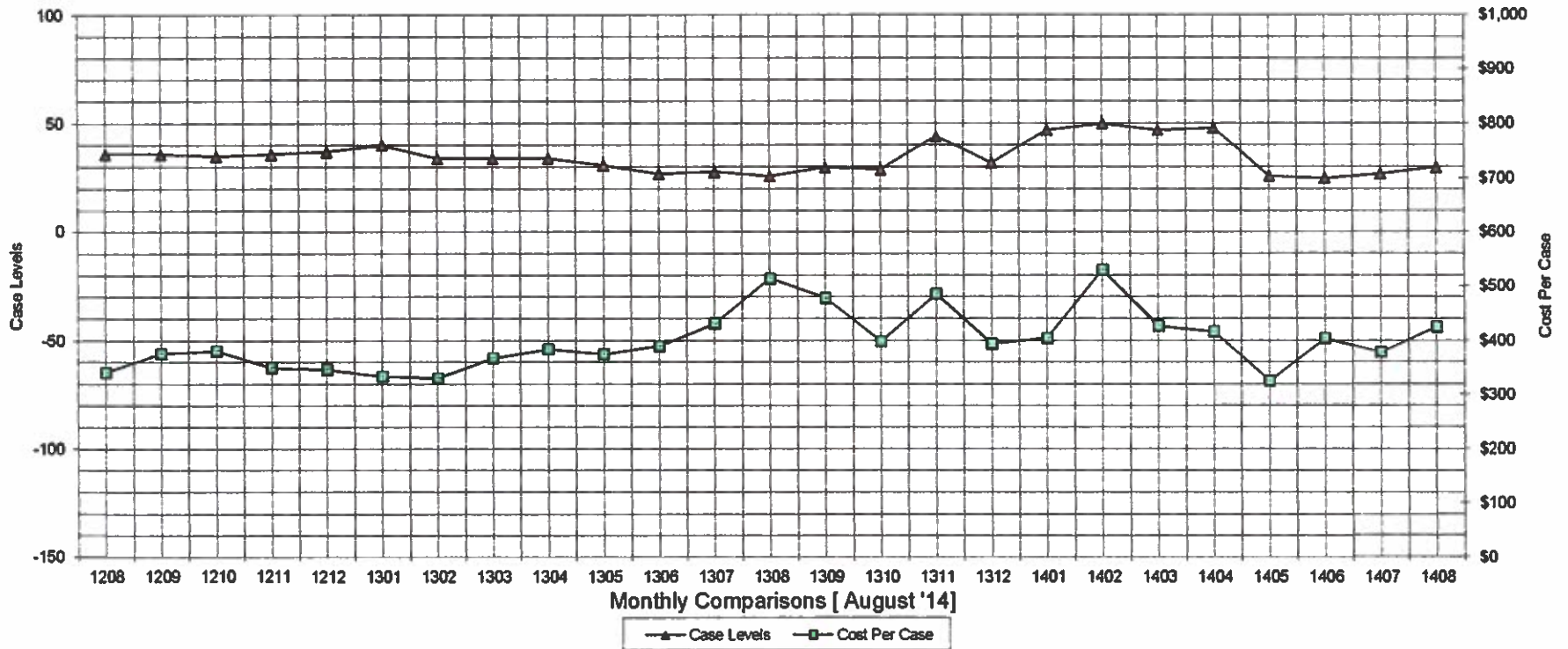
General Disclaimer: Unless specifically stated otherwise, case count numbers indicated in this report(s) stem from amounts entered by local personnel into applicable ADAPT and LASER systems, therefore, all reviewers/users of this report understand that the accuracy of such case count numbers is contingent on the respective numbers entered by local personnel. Any subsequent liabilities associated with incorrect amounts being entered into the noted systems rests solely with each locality.

Effective March 2008 a difference method of calculating TANF & TANF-UP information was established.

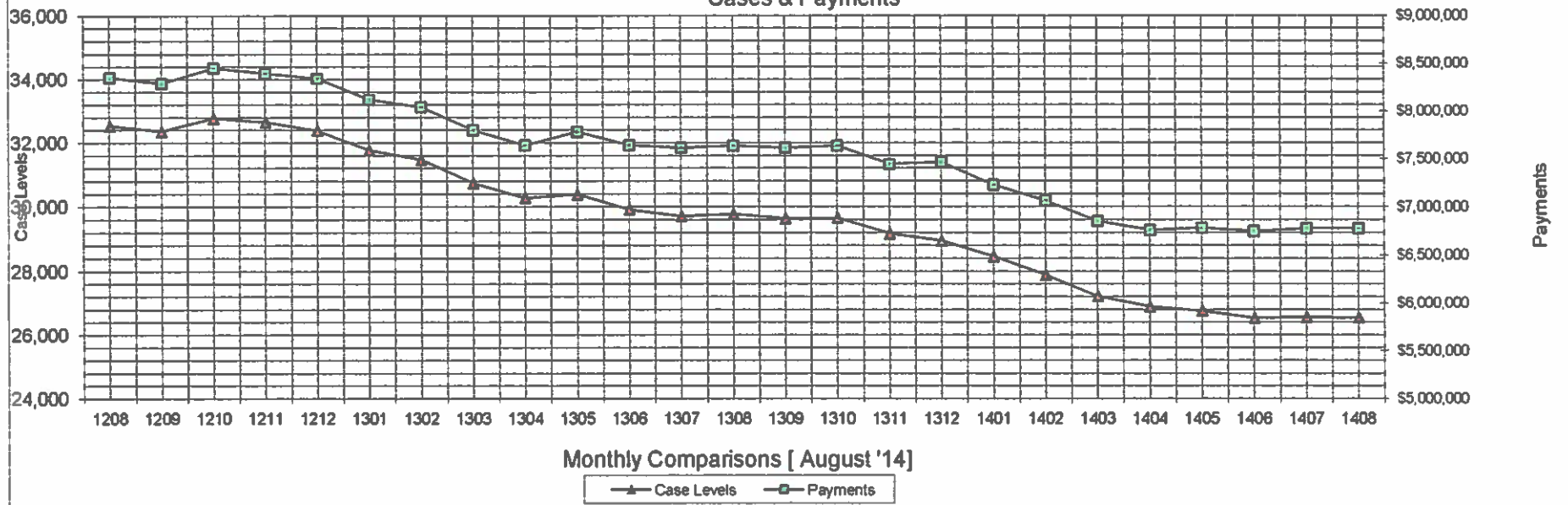
Auxiliary Grants Programs Cases & Payments



Adult Family Care Cases vs Cost-Per-Case



TANF Cases & Payments



Monthly Comparisons [August '14]

▲ Case Levels ■ Payments

GENERAL RELIEF Payments

