

DEPT. OF SOCIAL SERVICES-PAYMENTS AND AVERAGE GRANTS FOR WELFARE PROGRAMS

	June '14	May '14	INC./DEC. PRI MON	% DIFF PRI MON	**YTD TOTAL	June '13	INC/DEC PRIOR YR.	% INC/DEC PRIOR YR.
AUXILIARY GRANTS PROGRAMS								
RECIPIENTS	4,360	4,608	(248)	-5%	54,911	4,337	23	1%
PAYMENTS	\$1,807,166	\$1,838,419	(\$31,253)	-2%	\$22,104,344	\$1,643,582	\$163,584	10%
AVERAGE GRANT	\$414	\$399	\$16	4%	\$403	\$379	\$36	9%
ADULT FOSTER CARE								
RECIPIENTS	25	26	(1)	-4%	432	27	(2)	-7%
PAYMENTS	\$10,101	\$8,466	\$1,634	19%	\$189,415	\$10,527	(\$426)	-4%
AVERAGE GRANT	\$404	\$326	\$78	24%	\$438	\$390	\$14	4%
TEMPORARY ASSISTANCE FOR NEEDY FAMILIES								
RECIPIENTS-TOTAL	59,867	60,547	(680)	-1%	772,119	67,695	(7,148)	-11%
TANF	54,242	54,795	(553)	-1%	701,949	61,869	(7,627)	-12%
TANF-UNEMPLOYED PARENTS	5,625	5,752	(127)	-2%	70,170	5,826	(201)	-3%
1/EMERGENCY ASSISTANCE	7	0	7	0%	103	2	5	250%
PAYMENTS-TOTAL	\$7,343,952	\$7,380,417	(\$36,465)	0%	\$94,226,071	\$8,245,400	(\$901,447)	-11%
TANF	\$6,746,035	\$6,782,209	(\$36,173)	-1%	\$86,848,895	\$7,642,498	(\$896,463)	-12%
TANF-UNEMPLOYED PARENTS	\$596,737	\$598,209	(\$1,472)	0%	\$7,365,479	\$602,914	(\$6,178)	-1%
EMERGENCY ASSISTANCE	\$1,180	\$0	\$1,180	0%	\$11,697	(\$13)	\$1,193	-9543%
AVERAGE GRANT-TOTAL	\$123	\$122	\$1	1%	\$122	\$122	\$1	1%
AVERAGE MONEY PAYMENTS	\$124	\$124	\$1	0%	\$124	\$124	\$1	1%
AVERAGE TANF-UNEMPLOYED PARENTS	\$106	\$104	\$2	2%	\$105	\$103	\$3	3%
AVERAGE EMERGENCY ASSISTANCE	\$0	\$0	\$0	0%	\$114	(\$6)	\$6	-100%
TITLE IV-E								
ADOPTION SUBSIDY- RECIPIENTS	8,245	8,701	(456)	-5%	98,351	8,098	147	2%
ADOPTION SUBSIDY - PAYMENTS	\$6,335,396	\$6,332,071	\$3,325	0%	\$74,270,227	\$6,002,608	\$332,788	6%
AVERAGE ADOPTION SUBSIDY	\$768	\$728	\$41	6%	\$755	\$741	\$27	4%
SPECIAL NEEDS ADOPTION								
SPECIAL NEEDS ADOPTION - RECIPIENTS	4,070	4,271	(201)	-5%	50,033	4,187	(117)	-3%
SPECIAL NEEDS ADOPTION - PAYMENTS	\$2,994,799	\$3,133,908	(\$139,109)	-4%	\$37,551,406	\$3,193,684	(\$198,885)	-6%
AVERAGE SPECIAL NEEDS ADOPTION	\$736	\$734	\$2	0%	\$751	\$763	(\$27)	-4%
GENERAL RELIEF								
PAYMENTS-TOTAL	\$175,655	\$163,850	\$21,805	14%	\$2,038,623	\$203,341	(\$27,687)	-14%

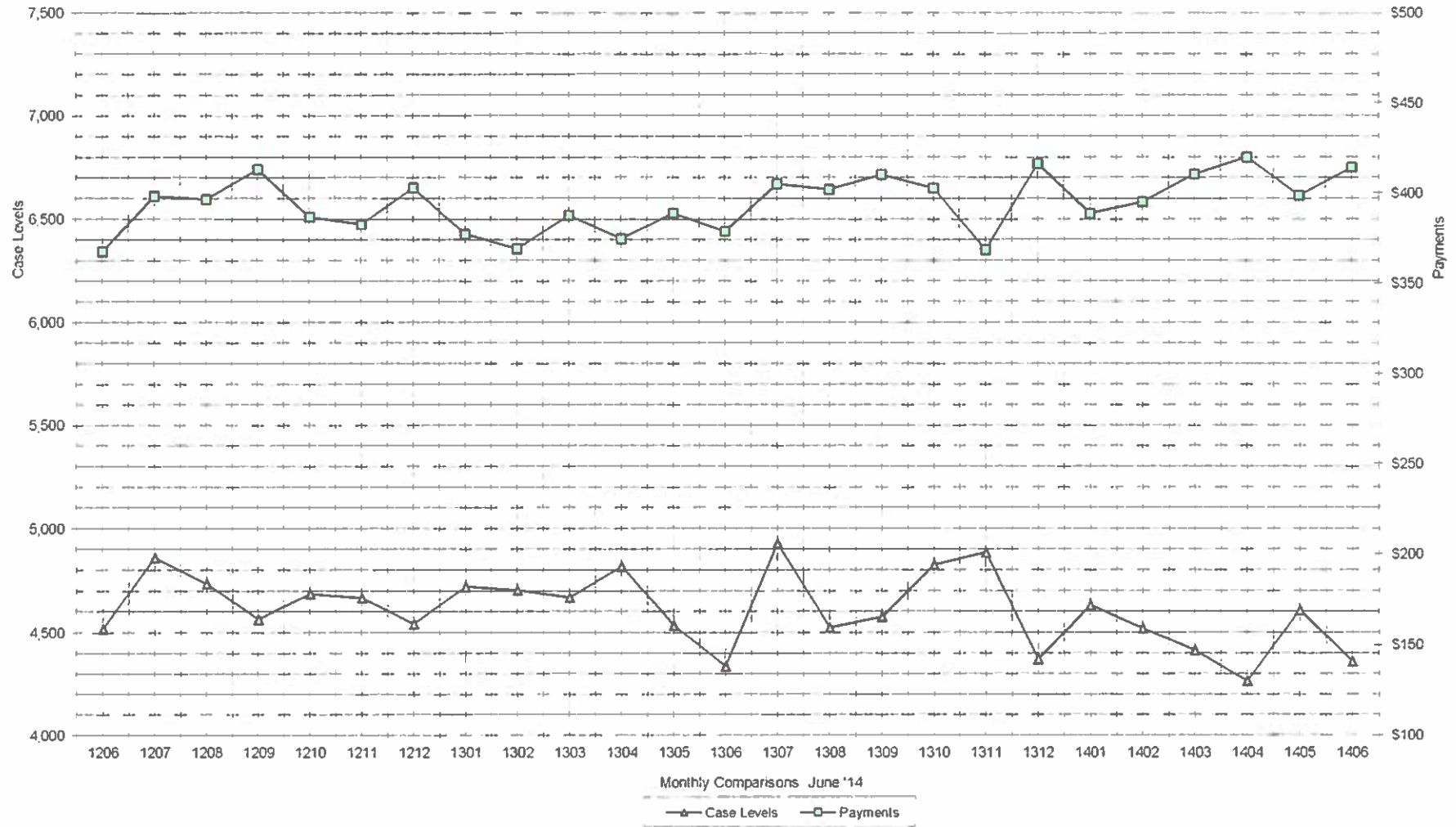
1/ INCLUDES 7 RECIPIENTS IN JUNE AND 0 IN MAY WHO ALSO REC'D MONEY PAYMENTS

** YEAR TO DATE TOTAL. THE RECIPIENT FIGURES DO NOT REPRESENT TRUE COUNTS AS THE RECIPIENTS ARE GENERALLY THE SAME EVERY MONTH. THE YEAR TO DATE DOLLAR FIGURES ARE ACCURATE.

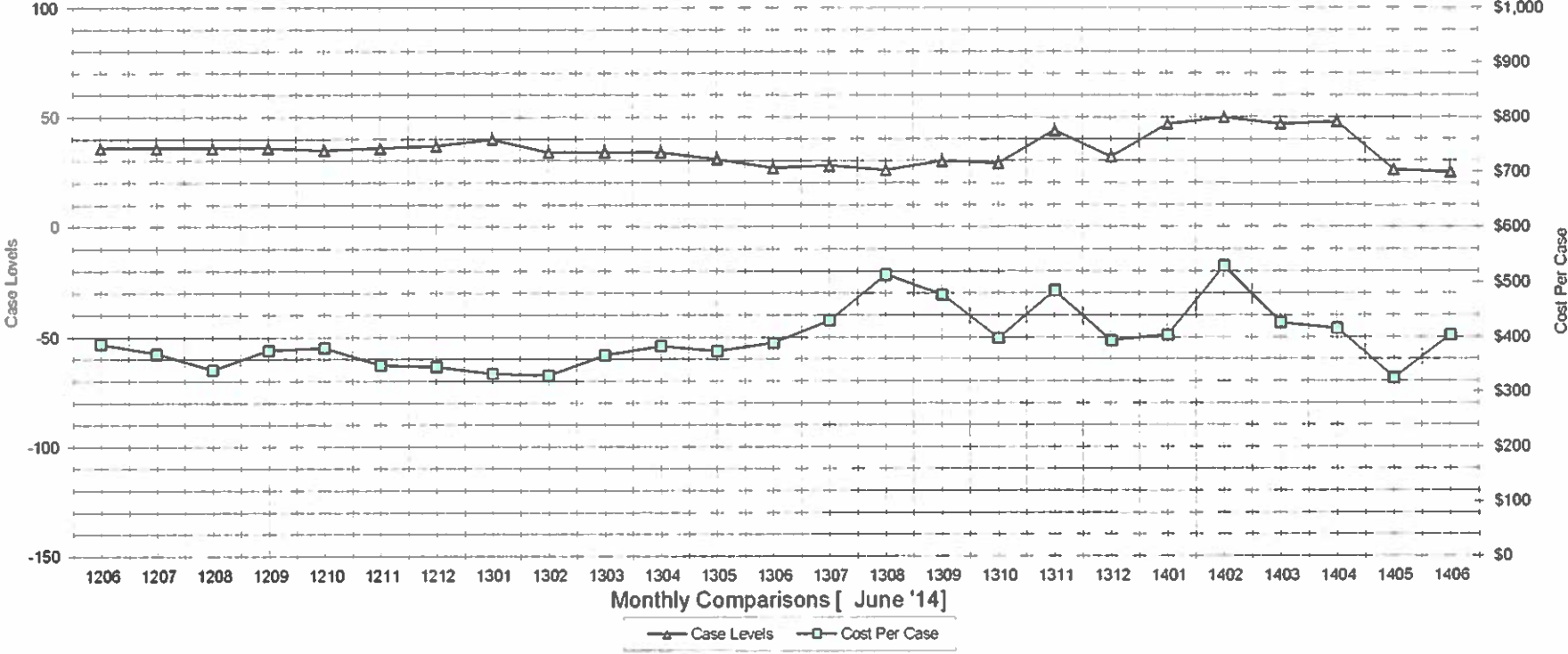
ARRA amounts are included in the payment amounts

General Disclaimer: Unless specifically stated otherwise, case count numbers indicated in this report(s) stem from amounts entered by local personnel into applicable ADAPT and LASER systems; therefore, all reviewers/users of this report understand that the accuracy of such case count numbers is contingent on the respective numbers entered by local personnel. Any subsequent liabilities associated with incorrect amounts being entered into the noted systems rests solely with each locality Effective March 2008 a difference method of calculating TANF & TANF-UP information was established.

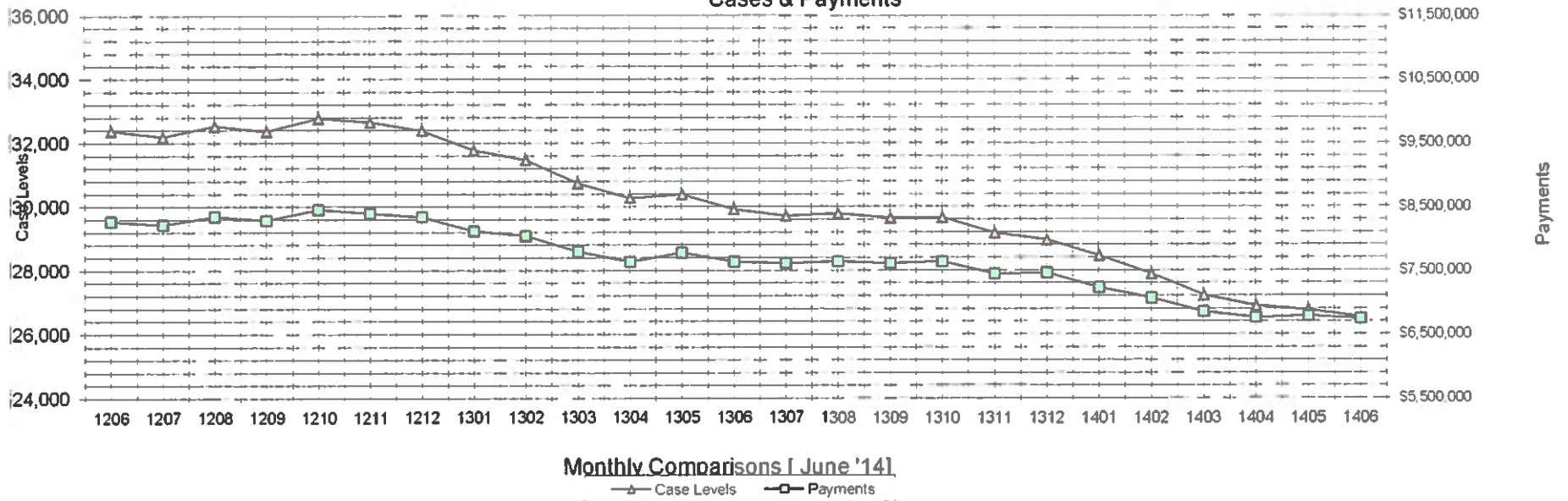
Auxiliary Grants Programs Cases & Payments



Adult Family Care Cases vs Cost-Per-Case



TANF Cases & Payments



GENERAL RELIEF
Payments

