

DEPT. OF SOCIAL SERVICES-PAYMENTS AND AVERAGE GRANTS FOR WELFARE PROGRAMS

	May '14	April '14	INC./DEC. PRI MON	% DIFF PRI MON	**YTD TOTAL	May '13	INC/DEC PRIOR YR.	% INC/DEC PRIOR YR.
<b>AUXILIARY GRANTS PROGRAMS</b>								
RECIPIENTS	4,608	4,266	342	8%	50,551	4,535	73	2%
PAYMENTS	\$1,838,419	\$1,792,149	\$46,270	3%	\$20,297,179	\$1,784,502	\$73,917	4%
AVERAGE GRANT	\$399	\$420	(\$21)	-5%	\$402	\$389	\$10	3%
<b>ADULT FOSTER CARE</b>								
RECIPIENTS	26	48	(22)	-46%	407	31	(5)	-16%
PAYMENTS	\$8,466	\$19,982	(\$11,515)	-58%	\$179,314	\$11,619	(\$3,153)	-27%
AVERAGE GRANT	\$326	\$416	(\$91)	-22%	\$441	\$375	(\$49)	-13%
<b>TEMPORARY ASSISTANCE FOR NEEDY FAMILIES</b>								
RECIPIENTS-TOTAL	60,547	60,671	(124)	0%	712,252	68,712	(8,039)	-12%
TANF	54,795	54,934	(139)	0%	647,707	62,875	(8,080)	-13%
TANF-UNEMPLOYED PARENTS	5,752	5,737	15	0%	64,545	5,837	(85)	-1%
1/EMERGENCY ASSISTANCE	0	2	(2)	-100%	96	4	(4)	-100%
PAYMENTS-TOTAL	\$7,380,417	\$7,347,862	\$32,556	0%	\$66,882,119	\$8,386,518	(\$1,006,100)	-12%
TANF	\$6,782,209	\$6,760,328	\$21,881	0%	\$60,102,859	\$7,784,715	(\$1,002,507)	-13%
TANF-UNEMPLOYED PARENTS	\$598,209	\$587,034	\$11,175	2%	\$6,768,742	\$601,552	(\$3,344)	-1%
EMERGENCY ASSISTANCE	\$0	\$500	(\$500)	-100%	\$10,517	\$250	(\$250)	-100%
AVERAGE GRANT-TOTAL	\$122	\$121	\$1	1%	\$122	\$122	(\$0)	0%
AVERAGE MONEY PAYMENTS	\$124	\$123	\$1	1%	\$124	\$124	(\$0)	0%
AVERAGE TANF-UNEMPLOYED PARENTS	\$104	\$102	\$2	2%	\$105	\$103	\$1	1%
AVERAGE EMERGENCY ASSISTANCE	\$0	\$250	(\$250)	-100%	\$110	\$83	(\$63)	-100%
<b>TITLE IV-E</b>								
ADOPTION SUBSIDY- RECIPIENTS	8,701	8,117	584	7%	90,106	8,766	(65)	-1%
ADOPTION SUBSIDY - PAYMENTS	\$6,332,071	\$6,276,396	\$55,676	1%	\$67,934,830	\$7,271,258	(\$939,187)	-13%
AVERAGE ADOPTION SUBSIDY	\$728	\$773	(\$46)	-6%	\$754	\$829	(\$102)	-12%
<b>SPECIAL NEEDS ADOPTION</b>								
SPECIAL NEEDS ADOPTION - RECIPIENTS	4,271	4,064	207	5%	45,983	4,403	(132)	-3%
SPECIAL NEEDS ADOPTION - PAYMENTS	\$3,133,908	\$3,093,198	\$40,712	1%	\$34,556,607	\$3,198,734	(\$64,826)	-2%
AVERAGE SPECIAL NEEDS ADOPTION	\$734	\$761	(\$27)	-4%	\$752	\$726	\$7	1%
<b>GENERAL RELIEF</b>								
PAYMENTS-TOTAL	\$153,850	\$97,091	\$56,759	58%	\$1,862,969	\$248,427	(\$92,577)	-38%

1/ INCLUDES 0 RECIPIENTS IN MAY AND 2 IN APRIL WHO ALSO REC'D MONEY PAYMENTS

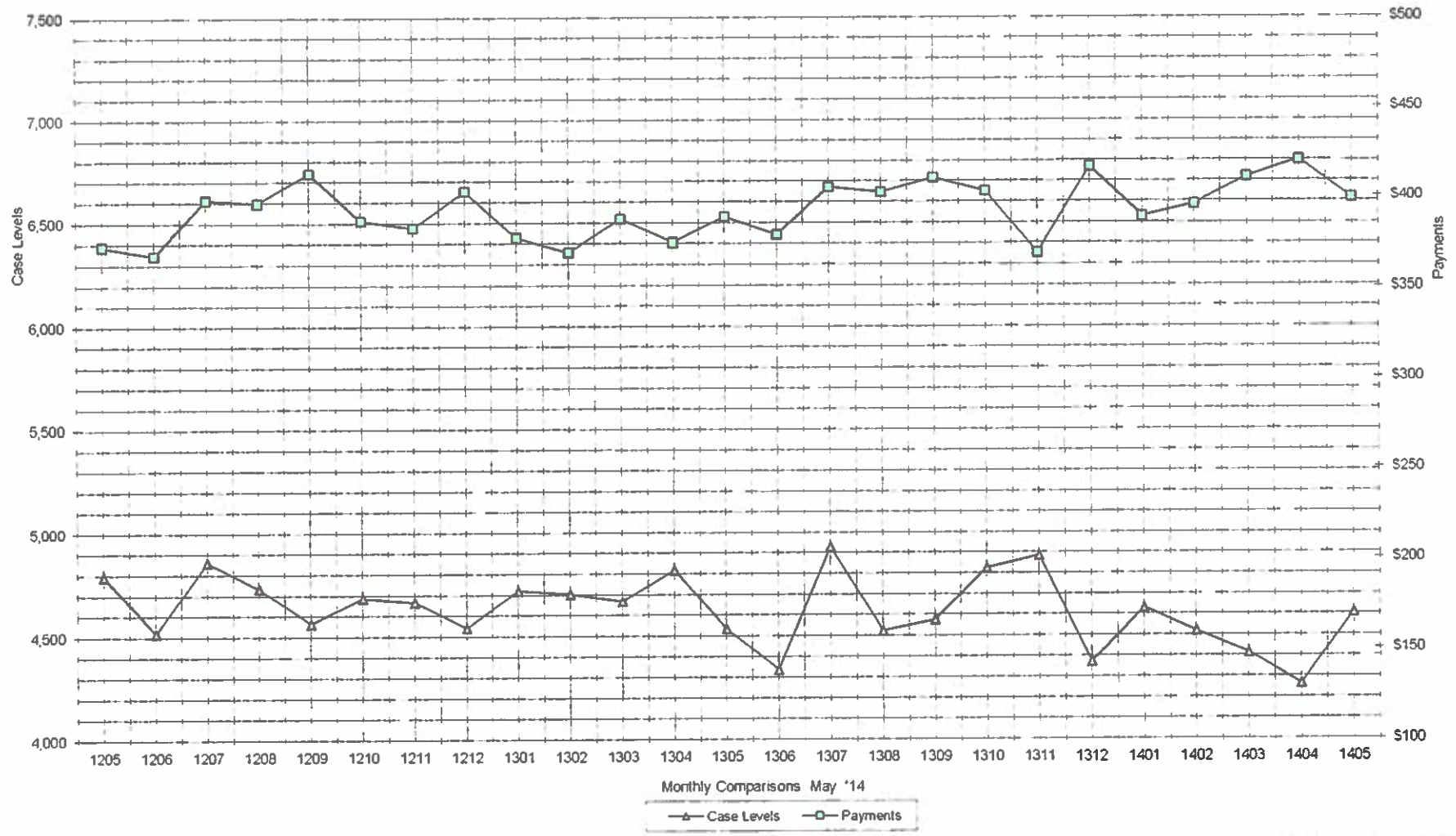
\*\* YEAR TO DATE TOTAL. THE RECIPIENT FIGURES DO NOT REPRESENT TRUE COUNTS AS THE RECIPIENTS ARE GENERALLY THE SAME EVERY MONTH. THE YEAR TO DATE DOLLAR FIGURES ARE ACCURATE.

ARRA amounts are included in the payment amounts

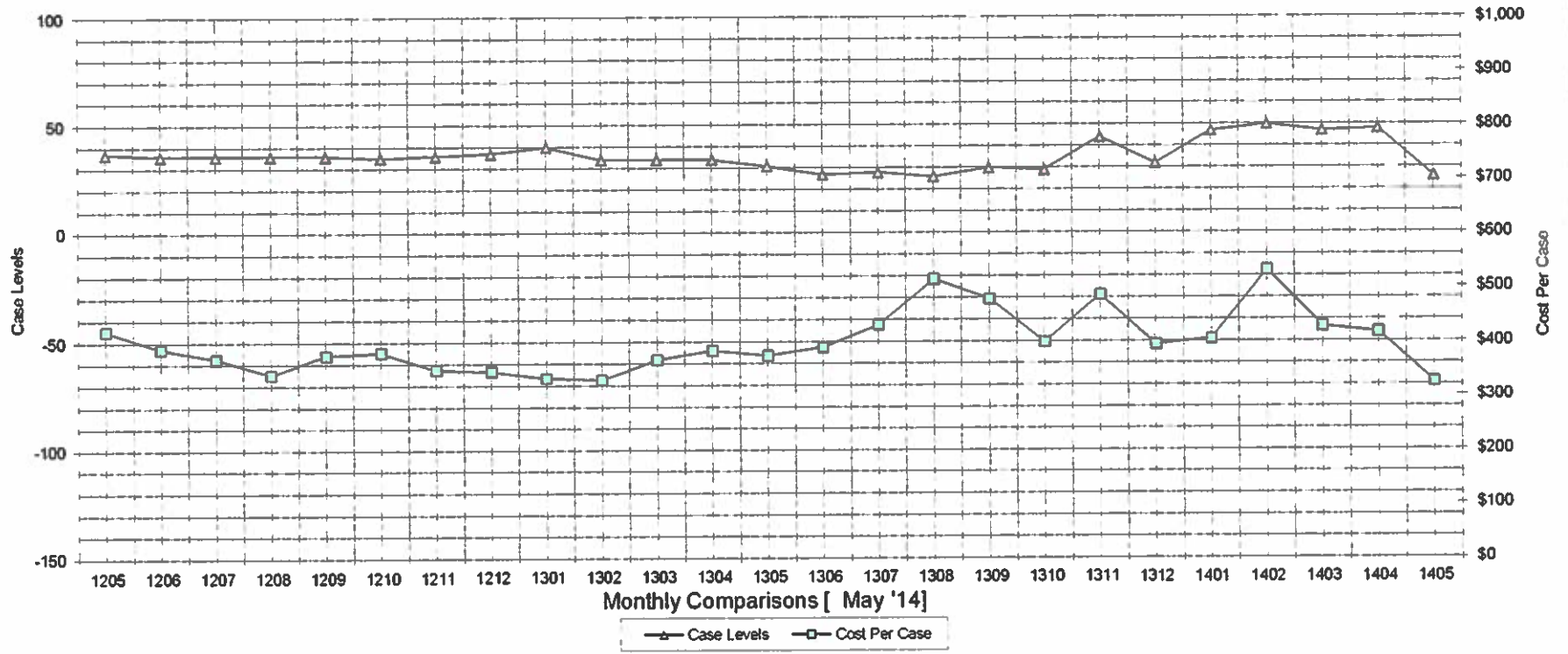
General Disclaimer: Unless specifically stated otherwise, case count numbers indicated in this report(s) stem from amounts entered by local personnel into applicable ADAPT and LASER systems, therefore all reviewers/users of this report understand that the accuracy of such case count numbers is contingent on the respective numbers entered by local personnel. Any subsequent liabilities associated with incorrect amounts being entered into the noted systems rests solely with each locality.

Effective March 2008 a difference method of calculating TANF & TANF-UP information was established.

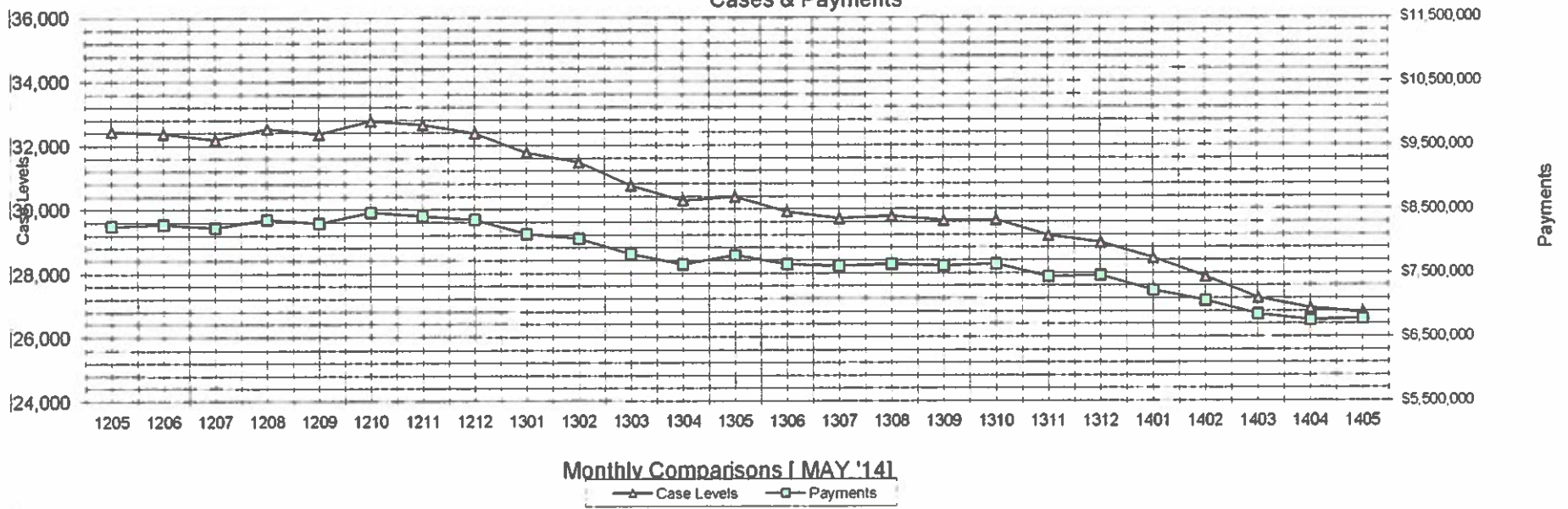
### Auxiliary Grants Programs Cases & Payments



### Adult Family Care Cases vs Cost-Per-Case



### TANF Cases & Payments



### GENERAL RELIEF Payments

