

DEPT. OF SOCIAL SERVICES-PAYMENTS AND AVERAGE GRANTS FOR WELFARE PROGRAMS

	April '14	March '14	INC/DEC. PRI MON	% DIFF PRI MON	**YTD TOTAL	April '13	INC/DEC PRIOR YR.	% INC/DEC PRIOR YR.
AUXILIARY GRANTS PROGRAMS								
RECIPIENTS	4,266	4,413	(147)	-3%	45,943	4,819	(553)	-11%
PAYMENTS	\$1,792,149	\$1,812,789	(\$20,640)	-1%	\$18,458,760	\$1,806,187	(\$14,038)	-1%
AVERAGE GRANT	\$420	\$411	\$9	2%	\$402	\$375	\$45	12%
ADULT FOSTER CARE								
RECIPIENTS	48	47	1	2%	381	34	14	41%
PAYMENTS	\$19,982	\$20,059	(\$78)	0%	\$170,848	\$13,062	\$6,919	53%
AVERAGE GRANT	\$418	\$427	(\$11)	-2%	\$448	\$384	\$32	8%
TEMPORARY ASSISTANCE FOR NEEDY FAMILIES								
RECIPIENTS-TOTAL	60,671	61,618	(947)	-2%	651,705	68,645	(7,022)	-10%
TANF	54,834	55,720	(786)	-1%	592,912	62,520	(7,586)	-12%
TANF-UNEMPLOYED PARENTS	5,737	5,898	(161)	-3%	58,793	6,125	(388)	-6%
1/EMERGENCY ASSISTANCE	2	5	(3)	-60%	96	2	0	0%
PAYMENTS-TOTAL	\$7,347,862	\$7,486,642	(\$118,780)	-2%	\$79,501,701	\$8,283,408	(\$935,546)	-11%
TANF	\$6,760,328	\$6,854,086	(\$93,758)	-1%	\$73,320,650	\$7,642,402	(\$882,074)	-12%
TANF-UNEMPLOYED PARENTS	\$587,034	\$612,056	(\$25,022)	-4%	\$6,170,534	\$640,352	(\$53,318)	-8%
EMERGENCY ASSISTANCE	\$500	\$500	\$0	0%	\$10,517	\$654	(\$154)	-24%
AVERAGE GRANT-TOTAL	\$121	\$121	(\$0)	0%	\$122	\$121	\$0	0%
AVERAGE MONEY PAYMENTS	\$123	\$123	\$0	0%	\$124	\$122	\$1	1%
AVERAGE TANF-UNEMPLOYED PARENTS	\$102	\$104	(\$1)	-1%	\$105	\$105	(\$2)	-2%
AVERAGE EMERGENCY ASSISTANCE	\$250	\$100	\$150	150%	\$110	\$327	(\$77)	-24%
TITLE IV-E								
ADOPTION SUBSIDY- RECIPIENTS	8,117	8,171	(54)	-1%	81,405	7,442	675	9%
ADOPTION SUBSIDY - PAYMENTS	\$6,276,396	\$6,331,709	(\$55,313)	-1%	\$61,802,759	\$5,404,419	\$871,977	16%
AVERAGE ADOPTION SUBSIDY	\$773	\$775	(\$2)	0%	\$757	\$726	\$47	6%
SPECIAL NEEDS ADOPTION								
SPECIAL NEEDS ADOPTION - RECIPIENTS	4,064	4,130	(66)	-2%	41,692	4,369	(305)	-7%
SPECIAL NEEDS ADOPTION - PAYMENTS	\$3,093,196	\$3,051,844	\$41,352	1%	\$31,422,699	\$3,245,449	(\$152,253)	-5%
AVERAGE SPECIAL NEEDS ADOPTION	\$761	\$736	\$22	3%	\$754	\$743	\$18	2%
GENERAL RELIEF								
PAYMENTS-TOTAL	\$97,091	\$176,219	(\$79,128)	-45%	\$1,709,119	\$237,492	(\$140,402)	-59%

1/ INCLUDES 2 RECIPIENTS IN APRIL AND 5 IN MARCH WHO ALSO REC'D MONEY PAYMENTS

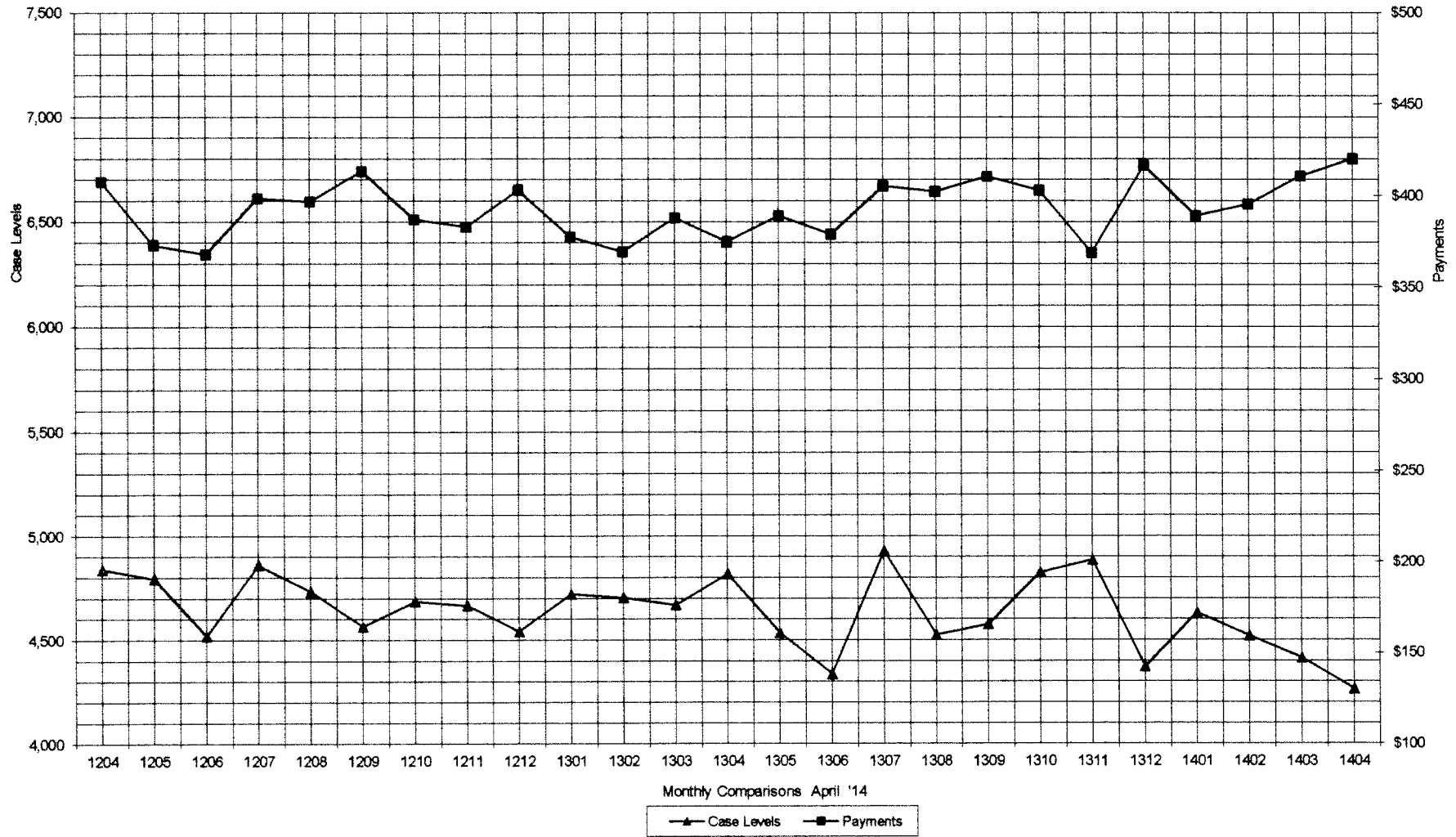
** YEAR TO DATE TOTAL: THE RECIPIENT FIGURES DO NOT REPRESENT TRUE COUNTS AS THE RECIPIENTS ARE GENERALLY THE SAME EVERY MONTH. THE YEAR TO DATE DOLLAR FIGURES ARE ACCURATE.

ARRA amounts are included in the payment amounts

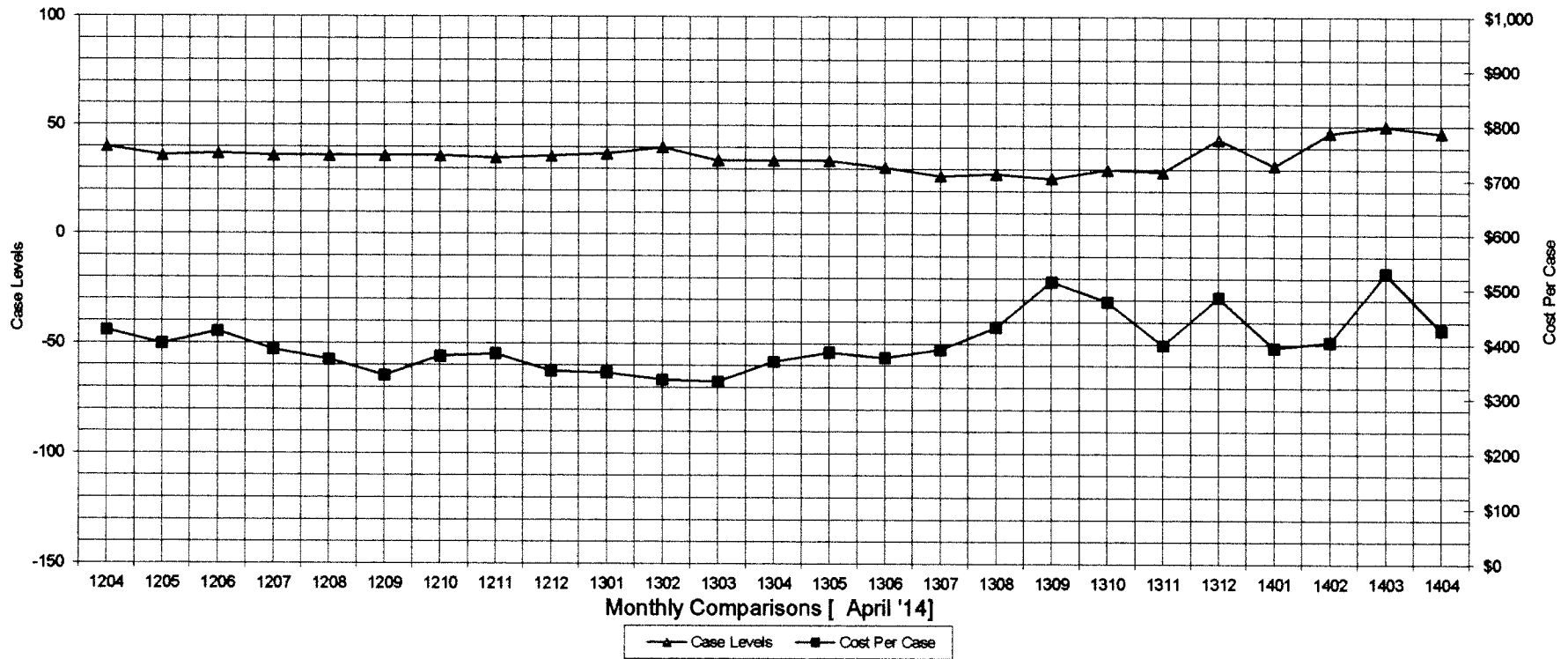
General Disclaimer: Unless specifically stated otherwise, case count numbers indicated in this report(s) stem from amounts entered by local personnel into applicable ADAPT and LASER systems; therefore, all reviewers/users of this report understand that the accuracy of such case count numbers is contingent on the respective numbers entered by local personnel. Any subsequent liabilities associated with incorrect amounts being entered into the noted systems rests solely with each locality.

Effective March 2008 a difference method of calculating TANF & TANF-UP information was established.

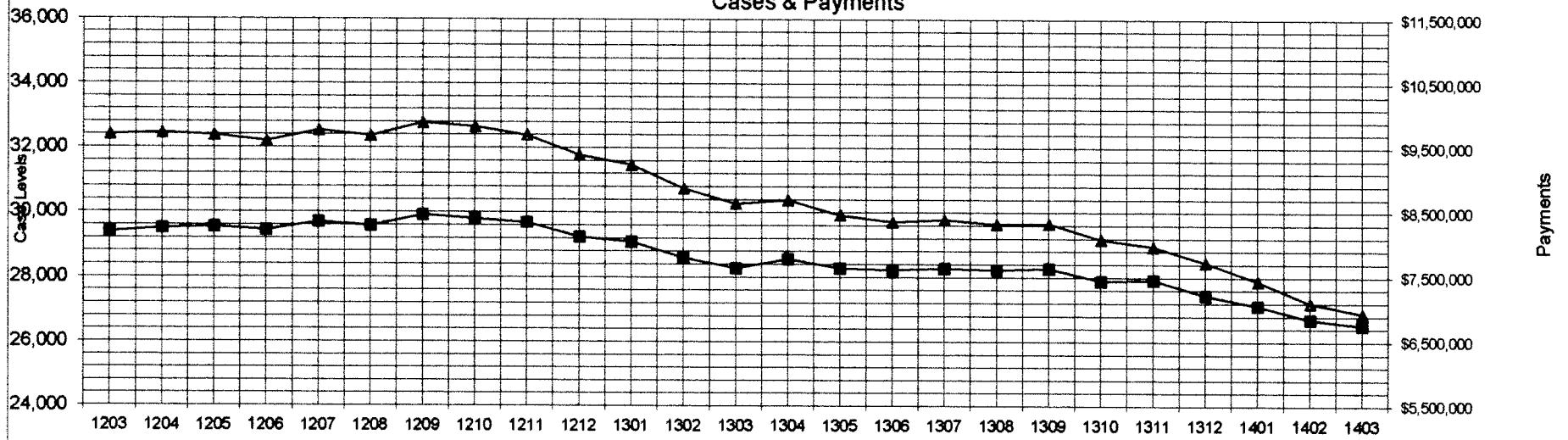
Auxiliary Grants Programs Cases & Payments



Adult Family Care Cases vs Cost-Per-Case



TANF Cases & Payments



Monthly Comparisons | APRIL '14 |

▲ Case Levels ■ Payments

GENERAL RELIEF Payments

