

DEPT. OF SOCIAL SERVICES-PAYMENTS AND AVERAGE GRANTS FOR WELFARE PROGRAMS

	February '14	January '14	INC./DEC. PRI MON	% DIFF PRI MON	**YTD TOTAL	February '13	INC/DEC PRIOR YR.	% INC/DEC PRIOR YR.
AUXILIARY GRANTS PROGRAMS								
RECIPIENTS	4,521	4,630	(109)	-2%	37,264	4,705	(184)	-4%
PAYMENTS	\$1,787,854	\$1,800,846	(\$12,992)	-1%	\$14,853,822	\$1,738,486	\$49,369	3%
AVERAGE GRANT	\$395	\$389	\$7	2%	\$399	\$369	\$26	7%
ADULT FOSTER CARE								
RECIPIENTS	50	47	3	6%	286	34	16	47%
PAYMENTS	\$26,502	\$19,003	\$7,499	39%	\$130,807	\$11,264	\$15,238	135%
AVERAGE GRANT	\$530	\$404	\$126	31%	\$457	\$331	\$199	60%
TEMPORARY ASSISTANCE FOR NEEDY FAMILIES								
RECIPIENTS-TOTAL	63,144	64,192	(1,048)	-2%	529,416	71,665	(7,458)	-10%
TANF	57,189	58,573	(1,384)	-2%	482,258	65,346	(8,157)	-12%
TANF-UNEMPLOYED PARENTS	5,955	5,619	336	6%	47,158	6,319	(364)	-6%
1/EMERGENCY ASSISTANCE	24	17	7	41%	89	11	13	118%
PAYMENTS-TOTAL	\$7,693,517	\$7,852,080	(\$158,563)	-2%	\$64,687,197	\$8,703,969	(\$1,010,452)	-12%
TANF	\$7,064,934	\$7,229,502	(\$164,567)	-2%	\$59,706,236	\$8,045,071	(\$980,137)	-12%
TANF-UNEMPLOYED PARENTS	\$627,085	\$621,097	\$5,988	1%	\$4,971,444	\$658,092	(\$31,008)	-5%
EMERGENCY ASSISTANCE	\$1,498	\$1,481	\$16	1%	\$9,517	\$805	\$682	86%
AVERAGE GRANT-TOTAL	\$122	\$122	(\$0)	0%	\$122	\$121	\$0	0%
AVERAGE MONEY PAYMENTS	\$124	\$123	\$0	0%	\$124	\$123	\$0	0%
AVERAGE TANF-UNEMPLOYED PARENTS	\$105	\$111	(\$5)	-5%	\$105	\$104	\$1	1%
AVERAGE EMERGENCY ASSISTANCE	\$62	\$87	(\$25)	-28%	\$107	\$73	(\$11)	-15%
TITLE IV-E								
ADOPTION SUBSIDY- RECIPIENTS	8,139	8,292	(153)	-2%	65,117	7,706	433	6%
ADOPTION SUBSIDY - PAYMENTS	\$6,206,101	\$6,254,826	(\$48,725)	-1%	\$48,994,855	\$5,778,571	\$427,530	7%
AVERAGE ADOPTION SUBSIDY	\$763	\$754	\$8	1%	\$752	\$750	\$13	2%
SPECIAL NEEDS ADOPTION								
SPECIAL NEEDS ADOPTION - RECIPIENTS	4,192	4,182	10	0%	33,498	4,319	(127)	-3%
SPECIAL NEEDS ADOPTION - PAYMENTS	\$2,986,775	\$3,188,888	(\$202,112)	-6%	\$25,277,660	\$3,316,903	(\$330,127)	-10%
AVERAGE SPECIAL NEEDS ADOPTION	\$712	\$763	(\$50)	-7%	\$755	\$768	(\$55)	-7%
GENERAL RELIEF								
PAYMENTS-TOTAL	\$162,474	\$221,111	(\$58,637)	-27%	\$1,435,809	\$258,205	(\$95,732)	-37%

1/ INCLUDES 52 RECIPIENTS IN FEBRUARY AND 17 IN JANUARY WHO ALSO REC'D MONEY PAYMENTS

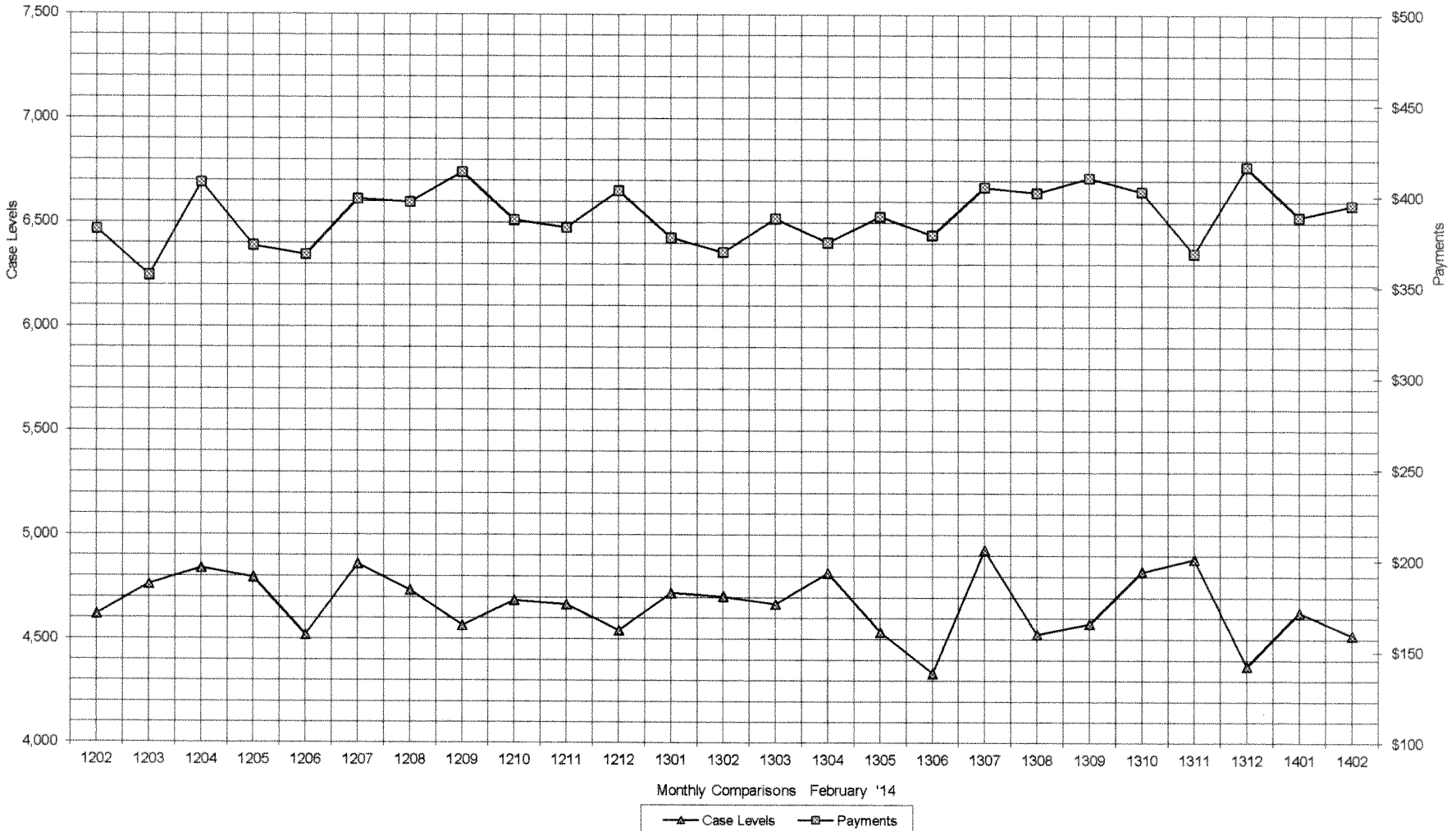
** YEAR TO DATE TOTAL. THE RECIPIENT FIGURES DO NOT REPRESENT TRUE COUNTS AS THE RECIPIENTS ARE GENERALLY THE SAME EVERY MONTH. THE YEAR TO DATE DOLLAR FIGURES ARE ACCURATE.

ARRA amounts are included in the payment amounts

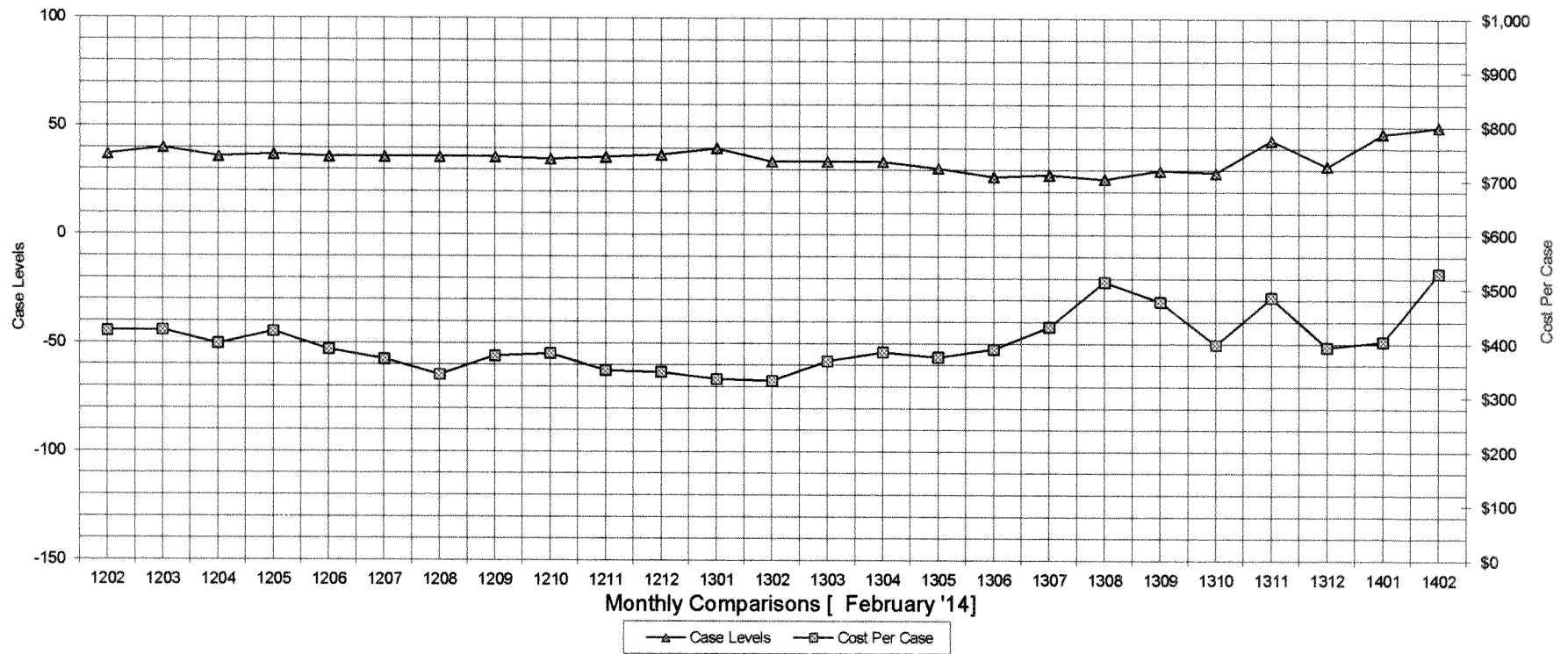
General Disclaimer: Unless specifically stated otherwise, case count numbers indicated in this report(s) stem from amounts entered by local personnel into applicable ADAPT and LASER systems, therefore, all reviewers/users of this report understand that the accuracy of such case count numbers is contingent on the respective numbers entered by local personnel. Any subsequent liabilities associated with incorrect amounts being entered into the noted systems rests solely with each locality

Effective March 2008 a difference method of calculating TANF & TANF-UP information was established.

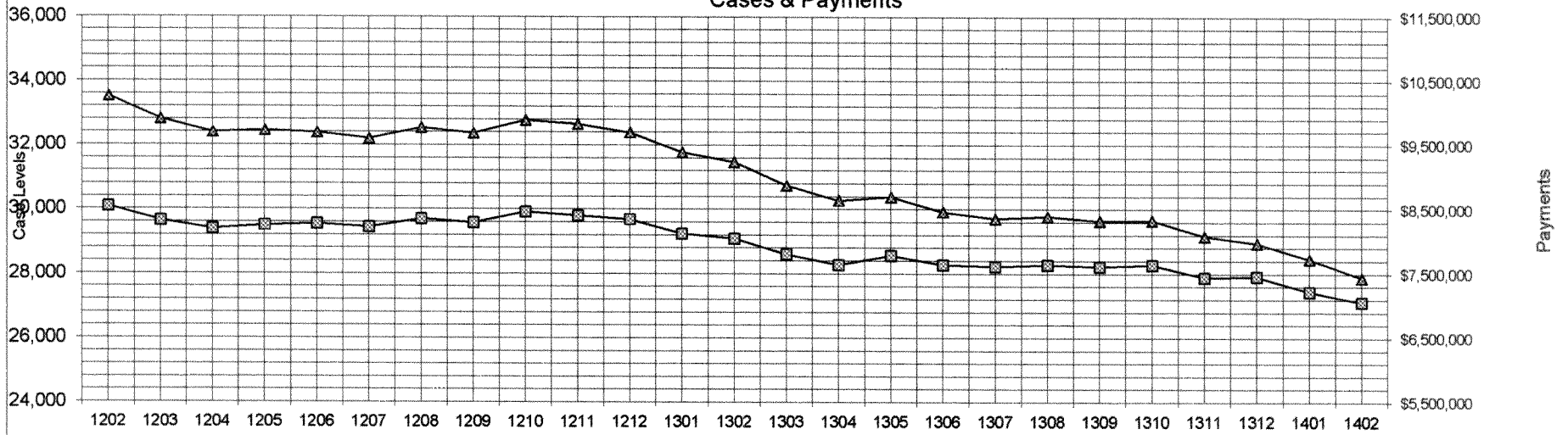
Auxiliary Grants Programs Cases & Payments



Adult Family Care Cases vs Cost-Per-Case



TANF Cases & Payments



Monthly Comparisons [FEBRUARY '14]

—▲— Case Levels —□— Payments

GENERAL RELIEF
Payments

