

DEPT. OF SOCIAL SERVICES-PAYMENTS AND AVERAGE GRANTS FOR WELFARE PROGRAMS

	MAY '13	APRIL '13	INC./DEC. PRI MON	% DIFF PRI MON	**YTD TOTAL	MAY '12	INC/DEC PRIOR YR.	% INC/DEC PRIOR YR.
AUXILIARY GRANTS PROGRAMS								
RECIPIENTS	4,535	4,819	(284)	-6%	51,507	4,796	(261)	-5%
PAYMENTS	\$1,764,502	\$1,806,187	(\$41,685)	-2%	\$20,039,166	\$1,789,133	(\$24,631)	-1%
AVERAGE GRANT	\$389	\$375	\$14	4%	\$389	\$373	\$16	4%
ADULT FAMILY CARE								
RECIPIENTS	31	34	(3)	-9%	389	37	(6)	-16%
PAYMENTS	\$11,619	\$13,062	(\$1,443)	-11%	\$139,787	\$15,588	(\$3,969)	-25%
AVERAGE GRANT	\$375	\$384	(\$9)	-2%	\$359	\$421	(\$46)	-11%
TEMPORARY ASSISTANCE FOR NEEDY FAMILIES								
RECIPIENTS-TOTAL	68,712	68,645	67	0%	795,342	74,006	(5,359)	-7%
TANF	62,875	62,520	355	1%	724,381	67,054	(4,179)	-6%
TANF-UNEMPLOYED PARENTS	5,837	6,125	(288)	-5%	70,961	6,952	(1,115)	-16%
1/EMERGENCY ASSISTANCE	4	2	2	100%	48	1	3	300%
PAYMENTS-TOTAL	\$8,386,518	\$8,283,408	\$103,110	1%	\$96,890,719	\$8,975,749	(\$589,232)	-7%
TANF	\$7,784,715	\$7,642,402	\$142,313	2%	\$89,471,772	\$8,253,483	(\$468,768)	-6%
TANF-UNEMPLOYED PARENTS	\$601,552	\$640,352	(\$38,799)	-6%	\$7,410,737	\$721,573	(\$120,021)	-17%
EMERGENCY ASSISTANCE	\$250	\$654	(\$404)	-62%	\$8,210	\$693	(\$443)	-64%
AVERAGE GRANT-TOTAL	\$122	\$121	\$1	1%	\$122	\$121	\$1	1%
AVERAGE MONEY PAYMENTS	\$124	\$122	\$2	1%	\$124	\$123	\$1	1%
AVERAGE TANF-UNEMPLOYED PARENTS	\$103	\$105	(\$1)	-1%	\$104	\$104	(\$1)	-1%
AVERAGE EMERGENCY ASSISTANCE	\$63	\$327	(\$265)	-81%	\$171	\$693	(\$630)	-91%
TITLE IV-E								
ADOPTION SUBSIDY- RECIPIENTS	8,766	7,442	1,324	18%	82,067	7,018	1,748	25%
ADOPTION SUBSIDY - PAYMENTS	\$7,271,258	\$5,404,419	\$1,866,839	35%	\$63,842,993	\$6,065,055	\$1,206,204	20%
AVERAGE ADOPTION SUBSIDY	\$829	\$726	\$103	14%	\$778	\$864	(\$35)	-4%
SPECIAL NEEDS ADOPTION								
SPECIAL NEEDS ADOPTION - RECIPIENTS	4,403	4,369	34	1%	46,001	4,539	(136)	-3%
SPECIAL NEEDS ADOPTION - PAYMENTS	\$3,198,734	\$3,245,449	(\$46,716)	-1%	\$36,303,453	\$2,912,728	\$286,006	10%
AVERAGE SPECIAL NEEDS ADOPTION	\$726	\$743	(\$16)	-2%	\$789	\$642	\$85	13%
GENERAL RELIEF								
PAYMENTS-TOTAL	\$246,427	\$237,492	\$8,934	4%	\$2,560,184	\$277,351	(\$30,924)	-11%

1/ INCLUDES 4 RECIPIENTS IN MAY AND 2 IN APRIL WHO ALSO REC'D MONEY PAYMENTS

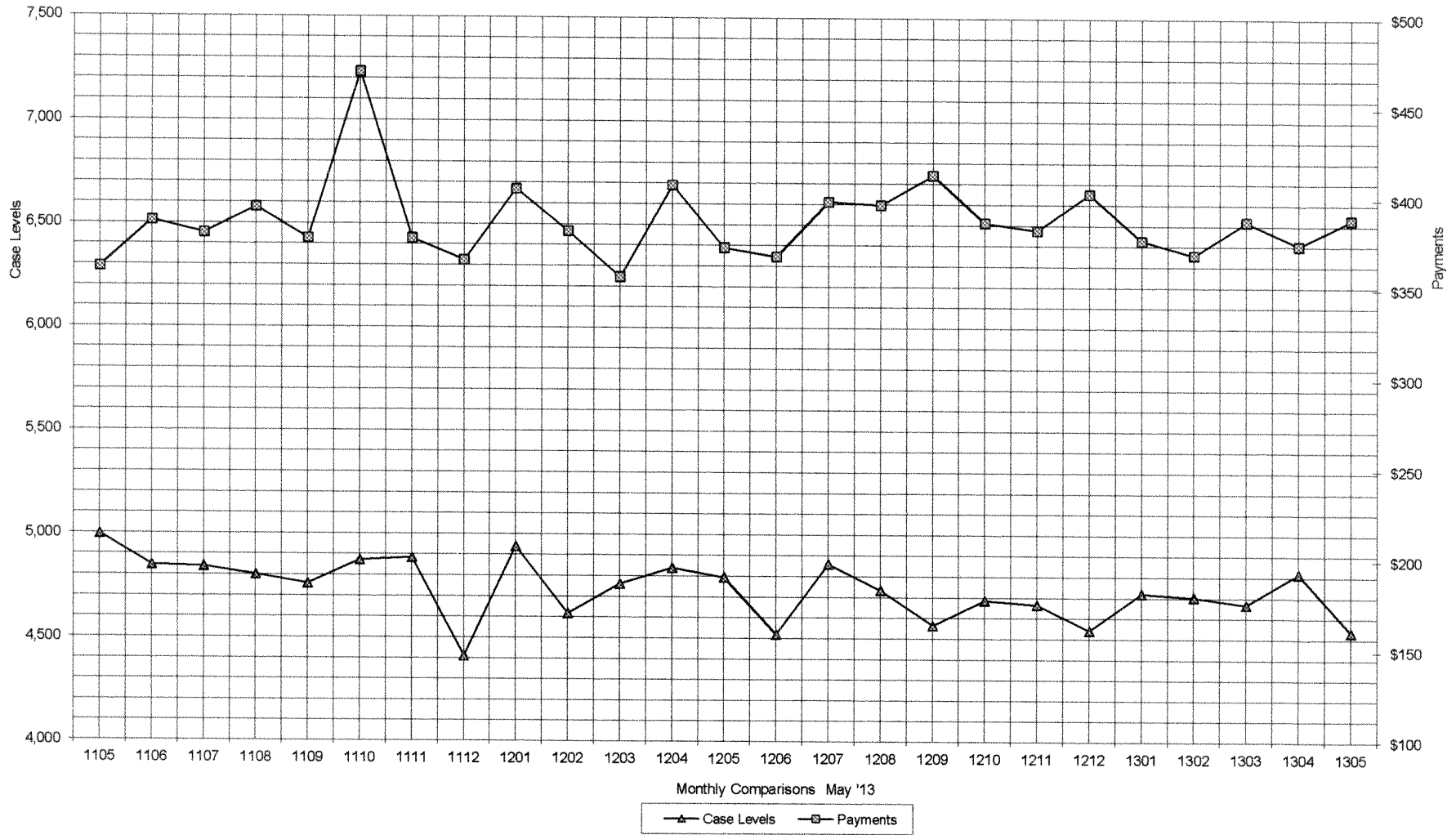
** YEAR TO DATE TOTAL: THE RECIPIENT FIGURES DO NOT REPRESENT TRUE COUNTS AS THE RECIPIENTS ARE GENERALLY THE SAME EVERY MONTH. THE YEAR TO DATE DOLLAR FIGURES ARE ACCURATE.

ARRA amounts are included in the payment amounts

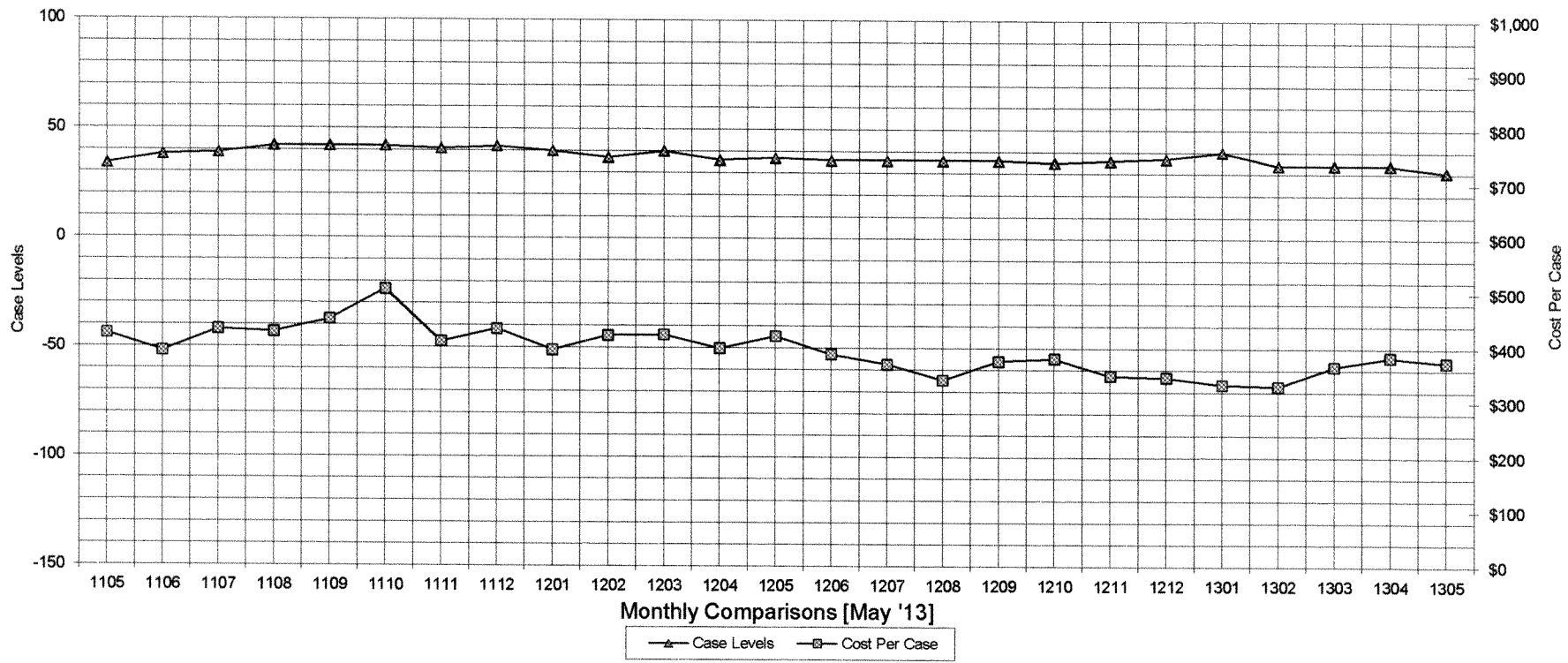
General Disclaimer: Unless specifically stated otherwise, case count numbers indicated in this report(s) stem from amounts entered by local personnel into applicable ADAPT and LASER systems; therefore, all reviewers/users of this report understand that the accuracy of such case count numbers is contingent on the respective numbers entered by local personnel. Any subsequent liabilities associated with incorrect amounts being entered into the noted systems rests solely with each locality.

Effective March 2008 a difference method of calculating TANF & TANF-UP information was established.

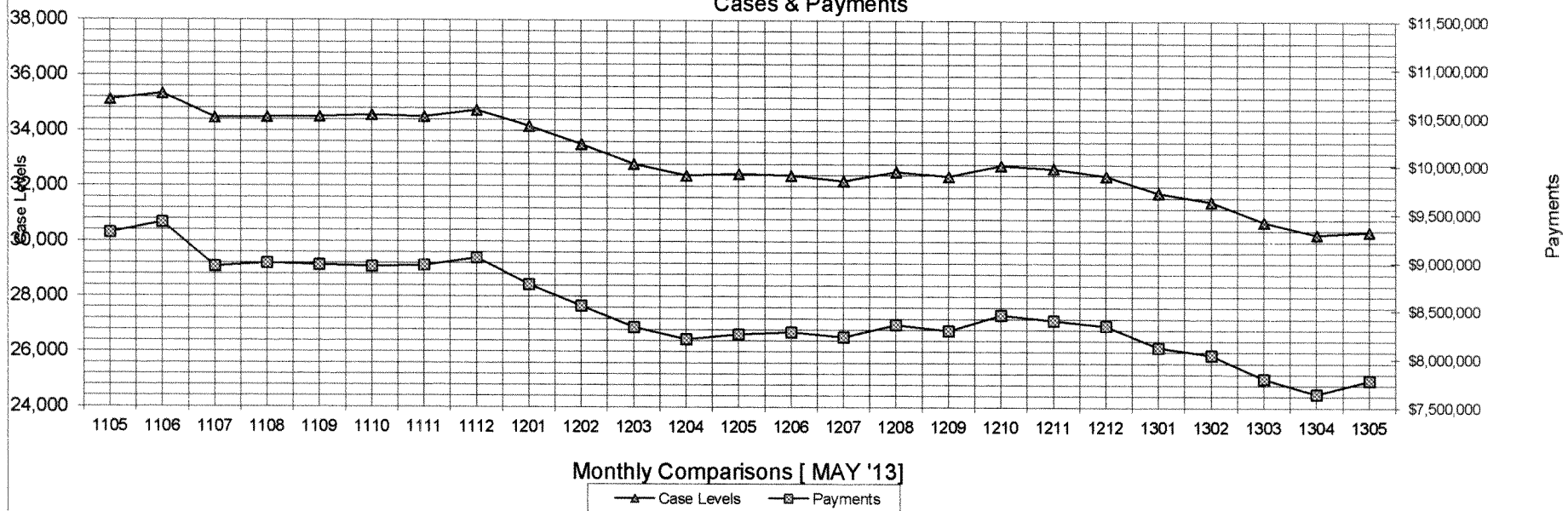
Auxiliary Grants Programs Cases & Payments



Adult Family Care Cases vs Cost-Per-Case



TANF Cases & Payments



Monthly Comparisons [MAY '13]

Case Levels Payments

GENERAL RELIEF
Payments

