

DEPT. OF SOCIAL SERVICES-PAYMENTS AND AVERAGE GRANTS FOR WELFARE PROGRAMS

	December '13	November '13	INC./DEC. PRI MON	% DIFF PRI MON	**YTD TOTAL	December '12	INC/DEC PRIOR YR.	% INC/DEC PRIOR YR.
AUXILIARY GRANTS PROGRAMS								
RECIPIENTS	4,372	4,885	(513)	-11%	28,113	4,543	(171)	-4%
PAYMENTS	\$1,821,091	\$1,802,464	\$18,627	1%	\$11,265,122	\$1,831,462	(\$10,371)	-1%
AVERAGE GRANT	\$417	\$369	\$48	13%	\$401	\$403	\$13	3%
ADULT FAMILY CARE								
RECIPIENTS	32	44	(12)	-27%	189	37	(5)	-14%
PAYMENTS	\$12,612	\$21,366	(\$8,754)	-41%	\$85,302	\$12,850	(\$238)	-2%
AVERAGE GRANT	\$394	\$486	(\$91)	-19%	\$451	\$347	\$47	13%
TEMPORARY ASSISTANCE FOR NEEDY FAMILIES								
RECIPIENTS-TOTAL	65,730	66,113	(383)	-1%	402,080	74,081	(7,964)	-11%
TANF	59,708	60,250	(542)	-1%	366,496	67,459	(7,751)	-11%
TANF-UNEMPLOYED PARENTS	6,022	5,863	159	3%	35,584	6,622	(600)	-9%
1/EMERGENCY ASSISTANCE	24	4	20	500%	48	2	22	1100%
PAYMENTS-TOTAL	\$8,105,445	\$8,046,491	\$58,954	1%	\$49,141,601	\$9,048,052	(\$942,607)	-10%
TANF	\$7,463,297	\$7,440,035	\$23,262	0%	\$45,411,800	\$8,346,440	(\$883,143)	-11%
TANF-UNEMPLOYED PARENTS	\$638,280	\$605,961	\$32,319	5%	\$3,723,263	\$701,164	(\$62,885)	-9%
EMERGENCY ASSISTANCE	\$3,868	\$495	\$3,373	681%	\$6,538	\$448	\$3,420	764%
AVERAGE GRANT-TOTAL	\$123	\$122	\$2	1%	\$122	\$122	\$1	1%
AVERAGE MONEY PAYMENTS	\$125	\$123	\$2	1%	\$124	\$124	\$1	1%
AVERAGE TANF-UNEMPLOYED PARENTS	\$106	\$103	\$3	3%	\$105	\$106	\$0	0%
AVERAGE EMERGENCY ASSISTANCE	\$181	\$124	\$37	30%	\$136	\$224	(\$63)	-28%
TITLE IV-E								
ADOPTION SUBSIDY- RECIPIENTS	7,834	8,835	(1,001)	-11%	48,686	7,181	653	9%
ADOPTION SUBSIDY - PAYMENTS	\$6,216,217	\$6,075,810	\$140,406	2%	\$36,533,728	\$5,810,207	\$406,009	7%
AVERAGE ADOPTION SUBSIDY	\$793	\$688	\$106	15%	\$750	\$609	(\$16)	-2%
SPECIAL NEEDS ADOPTION								
SPECIAL NEEDS ADOPTION - RECIPIENTS	3,921	4,558	(637)	-14%	25,124	4,075	(154)	-4%
SPECIAL NEEDS ADOPTION - PAYMENTS	\$3,191,026	\$3,003,896	\$187,130	6%	\$19,101,997	\$3,300,939	(\$109,913)	-3%
AVERAGE SPECIAL NEEDS ADOPTION	\$814	\$659	\$155	23%	\$760	\$810	\$4	0%
GENERAL RELIEF								
PAYMENTS-TOTAL	\$176,331	\$173,901	\$2,429	1%	\$1,052,225	\$225,069	(\$48,738)	-22%

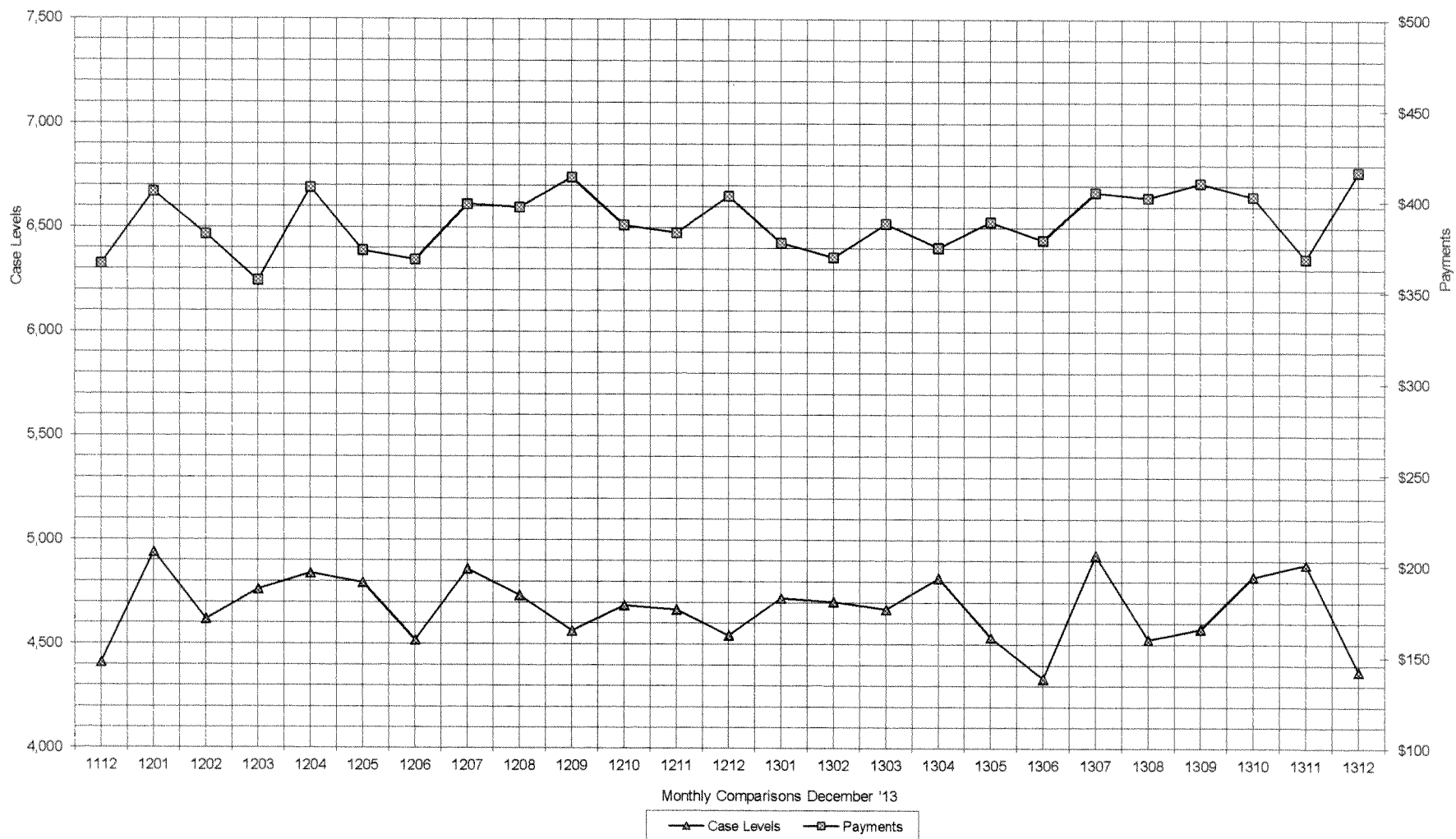
1/ INCLUDES 24 RECIPIENTS IN DECEMBER AND 4 IN NOVEMBER WHO ALSO REC'D MONEY PAYMENTS

** YEAR TO DATE TOTAL: THE RECIPIENT FIGURES DO NOT REPRESENT TRUE COUNTS AS THE RECIPIENTS ARE GENERALLY THE SAME EVERY MONTH. THE YEAR TO DATE DOLLAR FIGURES ARE ACCURATE.

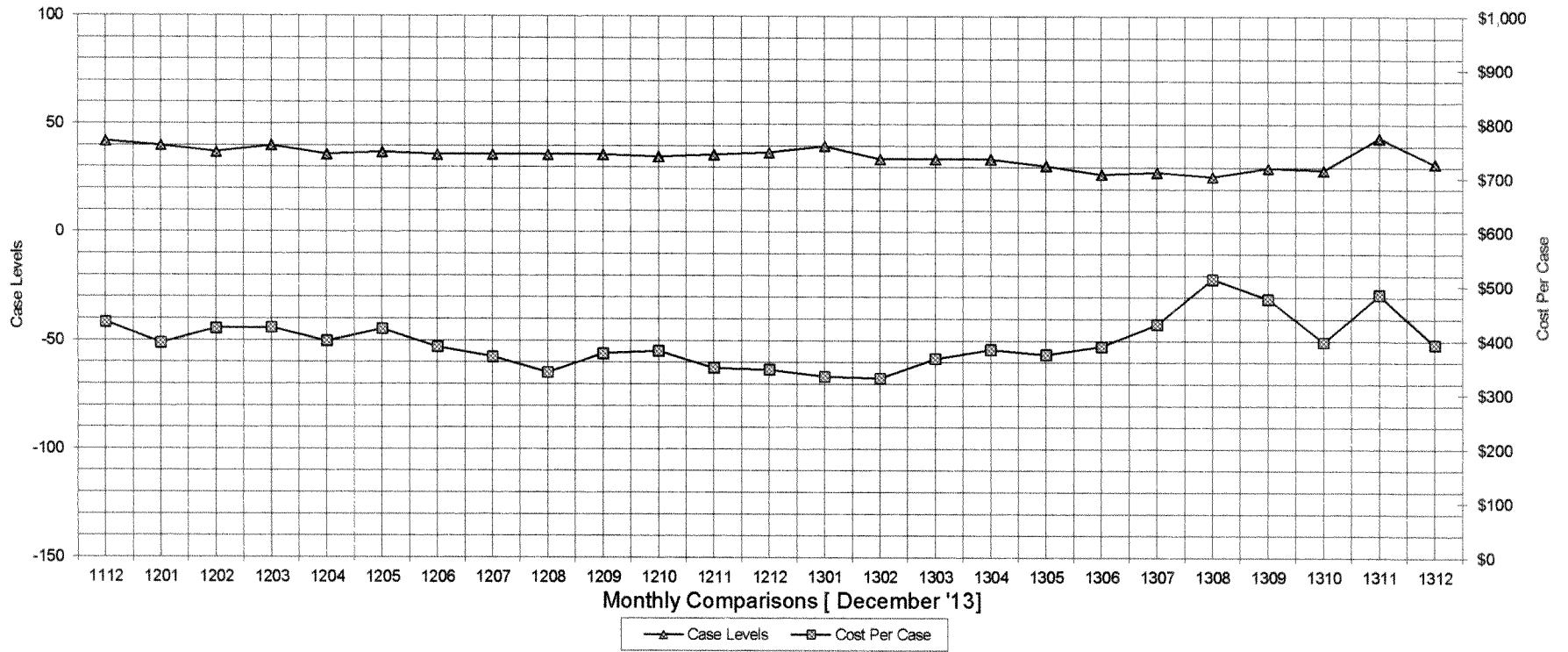
ARRA amounts are included in the payment amounts

General Disclaimer: Unless specifically stated otherwise, case count numbers indicated in this report(s) stem from amounts entered by local personnel into applicable ADAPT and LASER systems; therefore, all reviewers/users of this report understand that the accuracy of such case count numbers is contingent on the respective numbers entered by local personnel. Any subsequent liabilities associated with incorrect amounts being entered into the noted systems rests solely with each locality Effective March 2008 a difference method of calculating TANF & TANF-UP information was established.

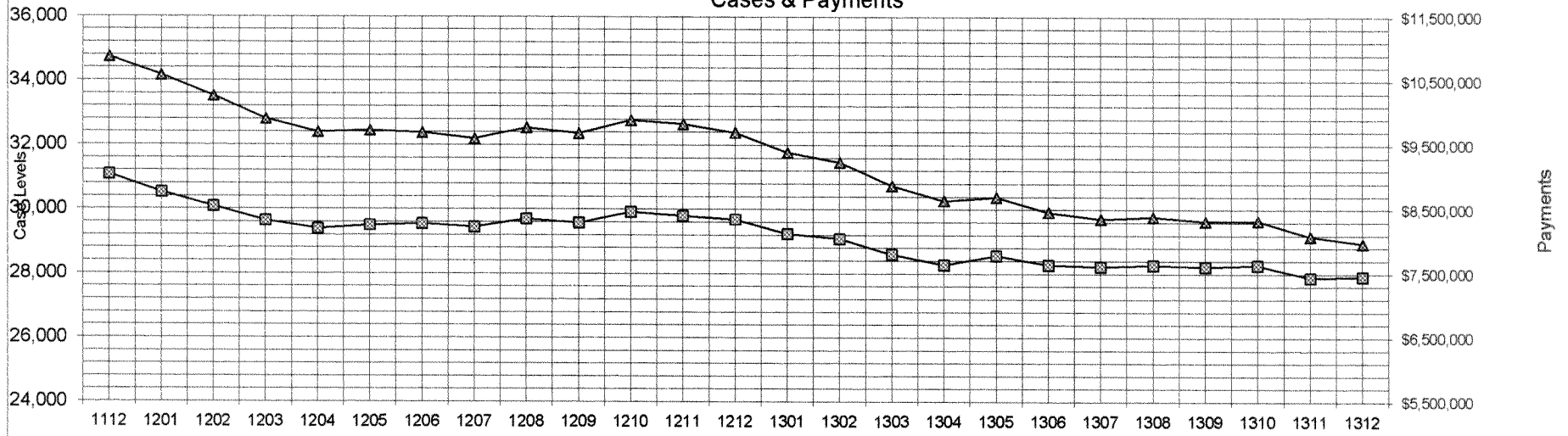
Auxiliary Grants Programs Cases & Payments



Adult Family Care Cases vs Cost-Per-Case



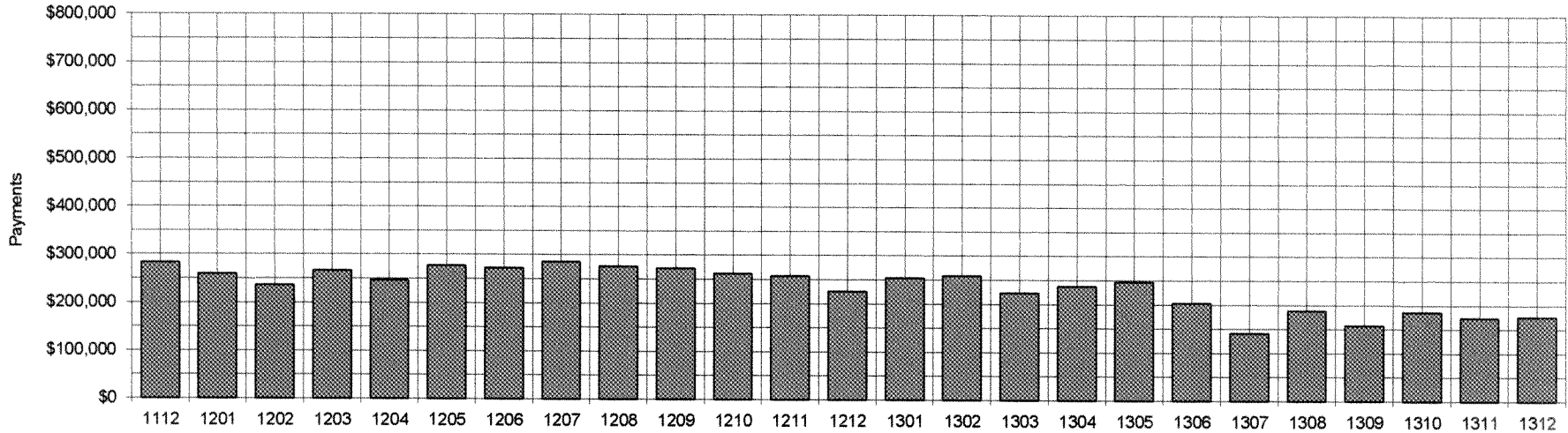
TANF Cases & Payments



Monthly Comparisons [DECEMBER '13]

—▲— Case Levels —■— Payments

GENERAL RELIEF
Payments



Monthly Comparisons [DECEMBER '13]