

DEPT. OF SOCIAL SERVICES-PAYMENTS AND AVERAGE GRANTS FOR WELFARE PROGRAMS

	APRIL '11	MARCH '11	INC./DEC. PRI MON	% DIFF PRI MON	**YTD TOTAL	APRIL '10	INC/DEC PRIOR YR.	% INC/DEC PRIOR YR.
AUXILIARY GRANTS PROGRAMS								
RECIPIENTS	4,929	4,796	133	3%	49,081	5,144	(215)	-4%
PAYMENTS	\$1,836,027	\$1,826,651	\$9,376	1%	\$18,485,300	\$1,896,114	(\$60,087)	-3%
AVERAGE GRANT	\$372	\$381	(\$8)	-2%	\$377	\$369	\$4	1%
ADULT FAMILY CARE								
RECIPIENTS	36	36	0	0%	379	33	3	9%
PAYMENTS	\$14,442	\$13,353	\$1,089	8%	\$157,771	\$11,714	\$2,727	23%
AVERAGE GRANT	\$401	\$371	\$30	8%	\$416	\$355	\$46	13%
TEMPORARY ASSISTANCE FOR NEEDY FAMILIES								
RECIPIENTS-TOTAL	80,306	81,353	(1,047)	-1%	846,855	85,195	(3,831)	-4%
TANF	72,240	73,106	(866)	-1%	760,813	76,574	(4,334)	-6%
TANF-UNEMPLOYED PARENTS	8,066	8,247	(181)	-2%	86,042	8,621	(555)	-6%
1/EMERGENCY ASSISTANCE	6	11	(5)	-45%	57	7	(1)	-14%
PAYMENTS-TOTAL	\$10,097,355	\$10,300,699	(\$203,344)	-2%	\$107,642,184	\$10,673,249	(\$575,894)	-5%
TANF	\$9,239,597	\$9,401,464	(\$161,867)	-2%	\$98,201,647	\$9,744,146	(\$504,548)	-5%
TANF-UNEMPLOYED PARENTS	\$855,758	\$895,775	(\$40,017)	-4%	\$9,424,752	\$927,337	(\$71,579)	-8%
EMERGENCY ASSISTANCE	\$2,000	\$3,460	(\$1,460)	-42%	\$15,785	\$1,766	\$234	13%
AVERAGE GRANT-TOTAL	\$126	\$127	(\$1)	-1%	\$127	\$125	\$0	0%
AVERAGE MONEY PAYMENTS	\$128	\$129	(\$1)	-1%	\$129	\$127	\$1	1%
AVERAGE TANF-UNEMPLOYED PARENTS	\$106	\$109	(\$3)	-2%	\$110	\$108	(\$1)	-1%
AVERAGE EMERGENCY ASSISTANCE	\$18	\$10	\$8	79%	\$277	\$252	(\$235)	-93%
TITLE IV-E								
ADOPTION SUBSIDY- RECIPIENTS	5,621	5,429	192	4%	55,029	4,909	712	15%
ADOPTION SUBSIDY - PAYMENTS	\$3,786,389	\$3,259,817	\$526,572	16%	\$36,206,907	\$3,230,353	\$556,037	17%
AVERAGE ADOPTION SUBSIDY	\$674	\$600	\$73	12%	\$658	\$658	\$16	2%
SPECIAL NEEDS ADOPTION								
SPECIAL NEEDS ADOPTION - RECIPIENTS	5,188	5,038	150	3%	51,780	5,018	170	3%
SPECIAL NEEDS ADOPTION - PAYMENTS	\$4,063,287	\$4,181,649	(\$118,362)	-3%	\$38,594,725	\$3,528,843	\$534,444	15%
AVERAGE SPECIAL NEEDS ADOPTION	\$783	\$830	(\$47)	-6%	\$745	\$703	\$80	11%
GENERAL RELIEF								
PAYMENTS-TOTAL	\$395,372	\$279,440	\$115,932	41%	\$2,940,911	\$436,719	(\$41,347)	-9%

1/ INCLUDES 6 RECIPIENTS IN APRIL AND 11 IN MARCH WHO ALSO REC'D MONEY PAYMENTS

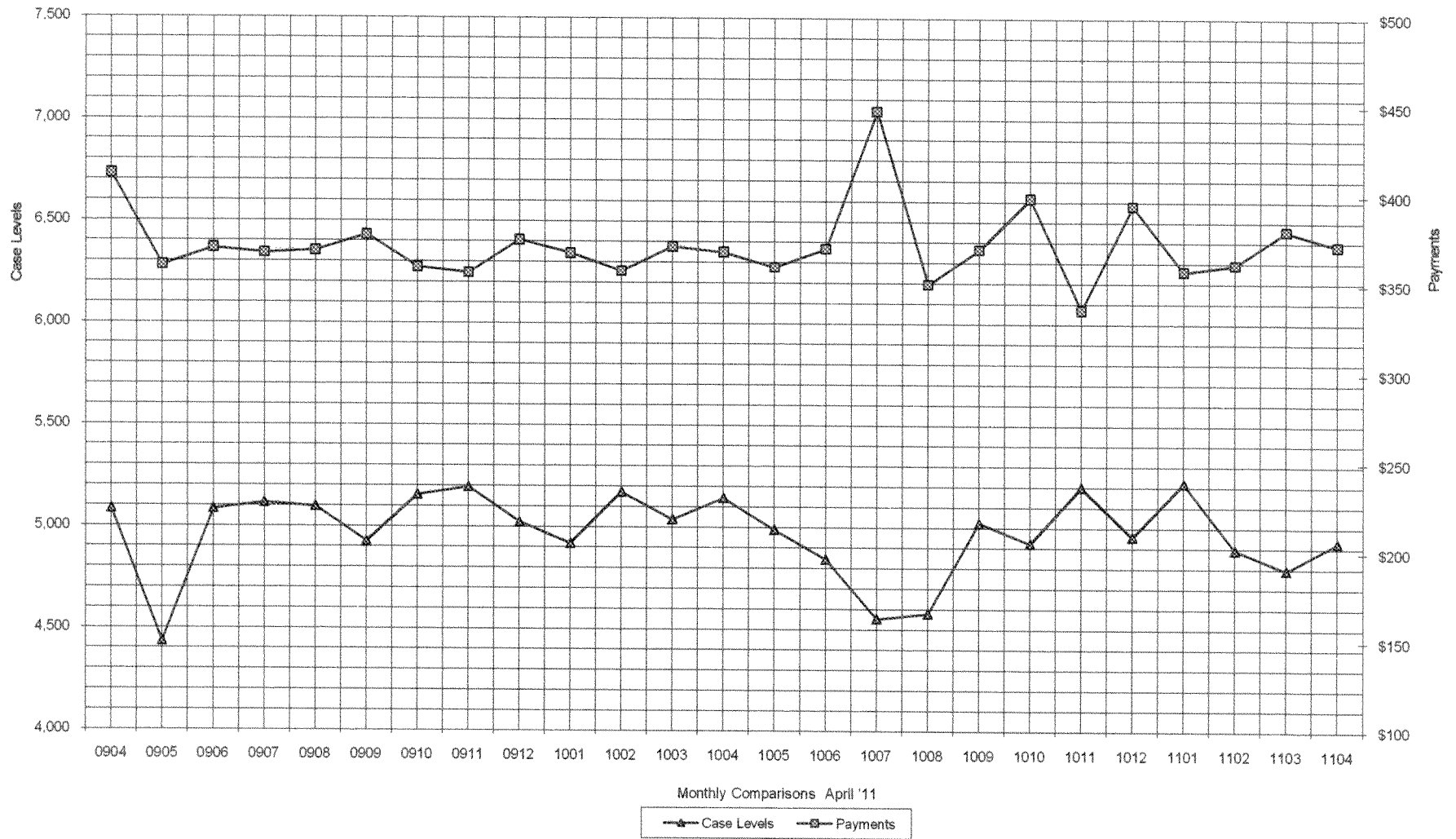
** YEAR TO DATE TOTAL: THE RECIPIENT FIGURES DO NOT REPRESENT TRUE COUNTS AS THE RECIPIENTS ARE GENERALLY THE SAME EVERY MONTH.
THE YEAR TO DATE DOLLAR FIGURES ARE ACCURATE.

ARRA amounts are included in the payment amounts

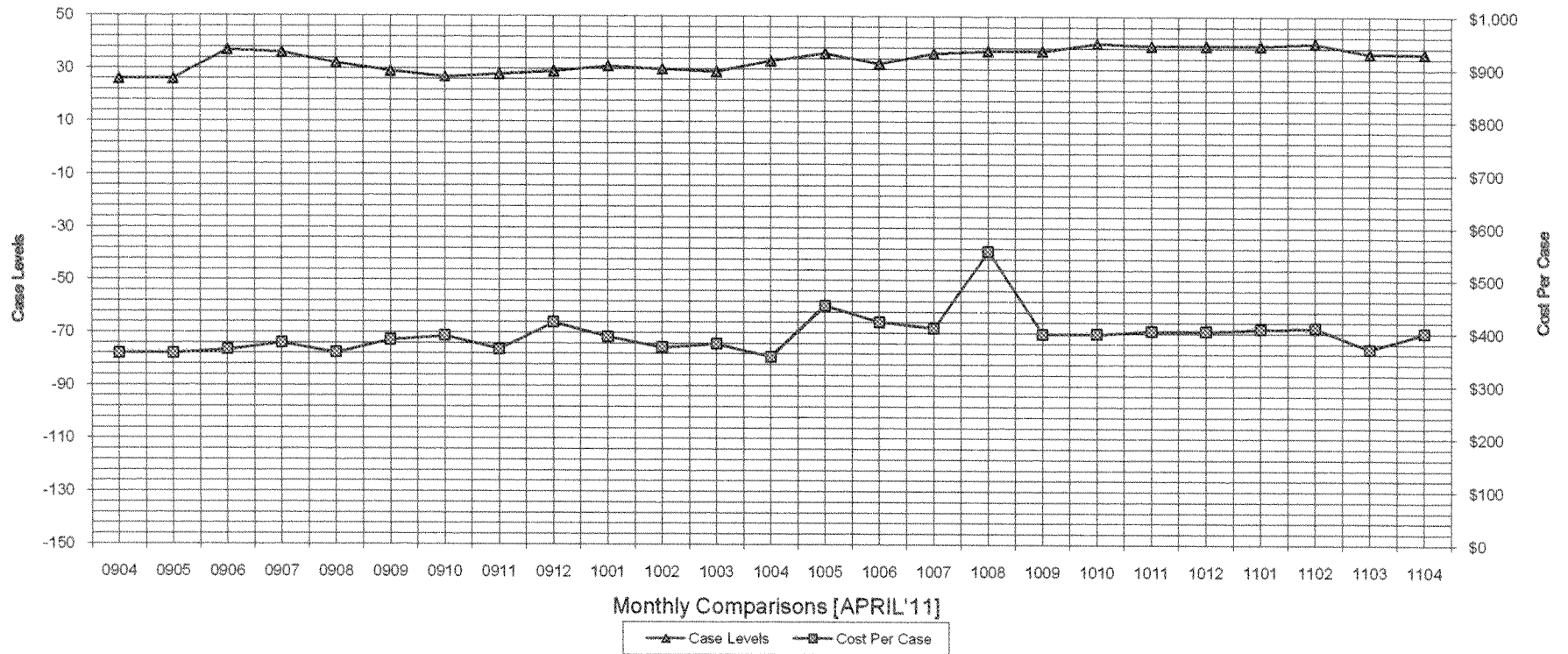
General Disclaimer: Unless specifically stated otherwise, case count numbers indicated in this report(s) stem from amounts entered by local personnel into applicable ADAPT and LASER systems; therefore, all reviewers/users of this report understand that the accuracy of such case count numbers is contingent on the respective numbers entered by local personnel. Any subsequent liabilities associated with incorrect amounts being entered into the noted systems rests solely with each locality.

Effective March 2008 a difference method of calculating TANF & TANF-UP information was established.

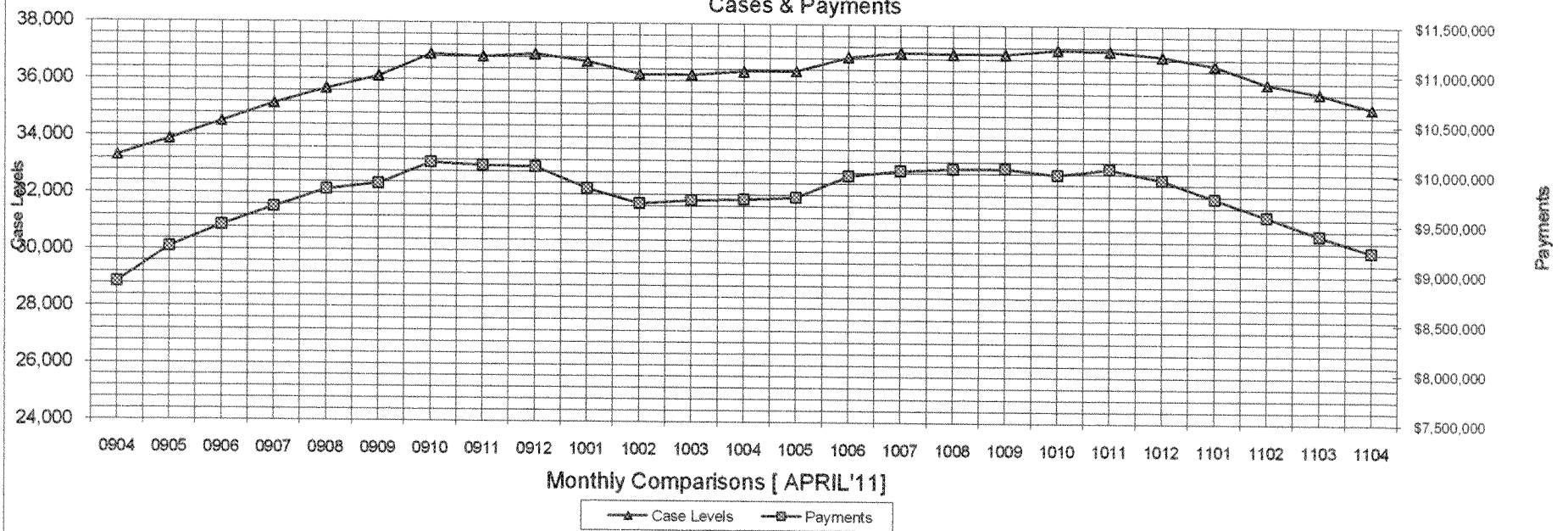
Auxiliary Grants Programs Cases & Payments



Adult Family Care Cases vs Cost-Per-Case



TANF Cases & Payments



GENERAL RELIEF
Payments

