

**DEPT. OF SOCIAL SERVICES-PAYMENTS AND AVERAGE GRANTS FOR WELFARE PROGRAMS**

	MARCH '10	FEBRUARY '10	INC./DEC. PRI MON	% DIFF PRI MON	**YTD TOTAL	MARCH '09	INC/DEC PRIOR YR.	% INC/DEC PRIOR YR.
<b>AUXILIARY GRANTS PROGRAMS</b>								
RECIPIENTS	5,049	5,173	(124)	-2%	45,660	5,118	(69)	-1%
PAYMENTS	\$1,872,589	\$1,851,704	\$20,884	1%	\$16,751,437	\$1,869,242	\$3,347	0%
AVERAGE GRANT	\$371	\$358	\$13	4%	\$367	\$365	\$6	2%
<b>ADULT FAMILY CARE</b>								
RECIPIENTS	29	30	(1)	-3%	271	26	3	12%
PAYMENTS	\$10,989	\$11,174	(\$185)	-2%	\$103,894	\$9,532	\$1,457	15%
AVERAGE GRANT	\$379	\$372	\$6	2%	\$383	\$367	\$12	3%
<b>TEMPORARY ASSISTANCE FOR NEEDY FAMILIES</b>								
RECIPIENTS-TOTAL	84,889	84,780	109	0%	767,302	75,343	9,446	13%
TANF	76,024	76,116	(92)	0%	690,853	68,321	7,703	11%
TANF-UNEMPLOYED PARENTS	8,865	8,664	201	2%	76,449	7,022	1,843	26%
1/EMERGENCY ASSISTANCE	15	9	6	0%	50	14	1	7%
PAYMENTS-TOTAL	\$10,694,031	\$10,658,737	\$35,294	0%	\$97,253,886	\$9,592,164	\$1,101,867	11%
TANF	\$9,730,849	\$9,700,244	\$30,605	0%	\$88,882,898	\$8,803,082	\$927,767	11%
TANF-UNEMPLOYED PARENTS	\$958,197	\$956,993	\$1,204	0%	\$8,355,402	\$787,322	\$170,875	22%
EMERGENCY ASSISTANCE	\$4,986	\$1,500	\$3,486	232%	\$15,585	\$1,760	\$3,225	183%
AVERAGE GRANT-TOTAL	\$126	\$126	\$0	0%	\$127	\$127	(\$1)	-1%
AVERAGE MONEY PAYMENTS	\$128	\$127	\$1	0%	\$129	\$129	(\$1)	-1%
AVERAGE TANF-UNEMPLOYED PARENTS	\$108	\$110	(\$2)	-2%	\$109	\$112	(\$4)	-4%
AVERAGE EMERGENCY ASSISTANCE	\$332	\$167	\$166	0%	\$312	\$126	\$207	164%
<b>TITLE IV-E</b>								
ADOPTION SUBSIDY- RECIPIENTS	4,971	5,008	(37)	-1%	43,822	4,660	311	7%
ADOPTION SUBSIDY - PAYMENTS	\$3,303,964	\$3,296,106	\$7,858	0%	\$28,351,695	\$2,925,141	\$378,823	13%
AVERAGE ADOPTION SUBSIDY	\$665	\$658	\$6	1%	\$647	\$628	\$37	6%
<b>SPECIAL NEEDS ADOPTION</b>								
SPECIAL NEEDS ADOPTION - RECIPIENTS	4,860	4,991	(131)	-3%	43,403	4,488	372	8%
SPECIAL NEEDS ADOPTION - PAYMENTS	\$3,614,305	\$3,482,424	\$131,881	4%	\$31,453,450	\$3,279,806	\$334,499	10%
AVERAGE SPECIAL NEEDS ADOPTION	\$744	\$698	\$46	7%	\$725	\$731	\$13	2%
<b>GENERAL RELIEF</b>								
PAYMENTS-TOTAL	\$351,217	\$439,210	(\$87,993)	-20%	\$3,556,906	\$326,264	\$24,953	8%

1/ INCLUDES 15 RECIPIENTS IN MARCH AND 9 IN FEBRUARY WHO ALSO REC'D MONEY PAYMENTS

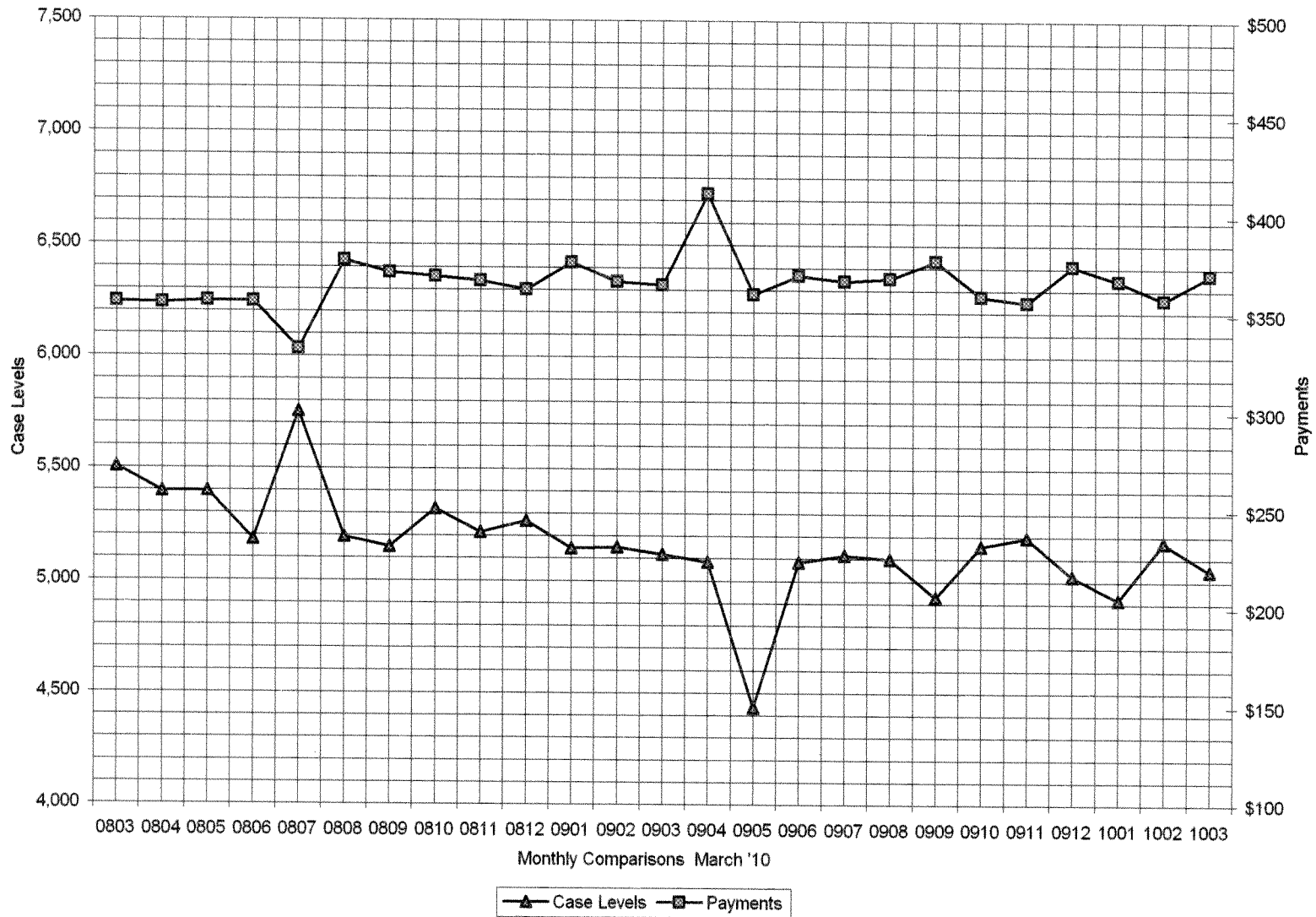
\*\* YEAR TO DATE TOTAL: THE RECIPIENT FIGURES DO NOT REPRESENT TRUE COUNTS AS THE RECIPIENTS ARE GENERALLY THE SAME EVERY MONTH. THE YEAR TO DATE DOLLAR FIGURES ARE ACCURATE.

ARRA amounts are included in the payment amounts

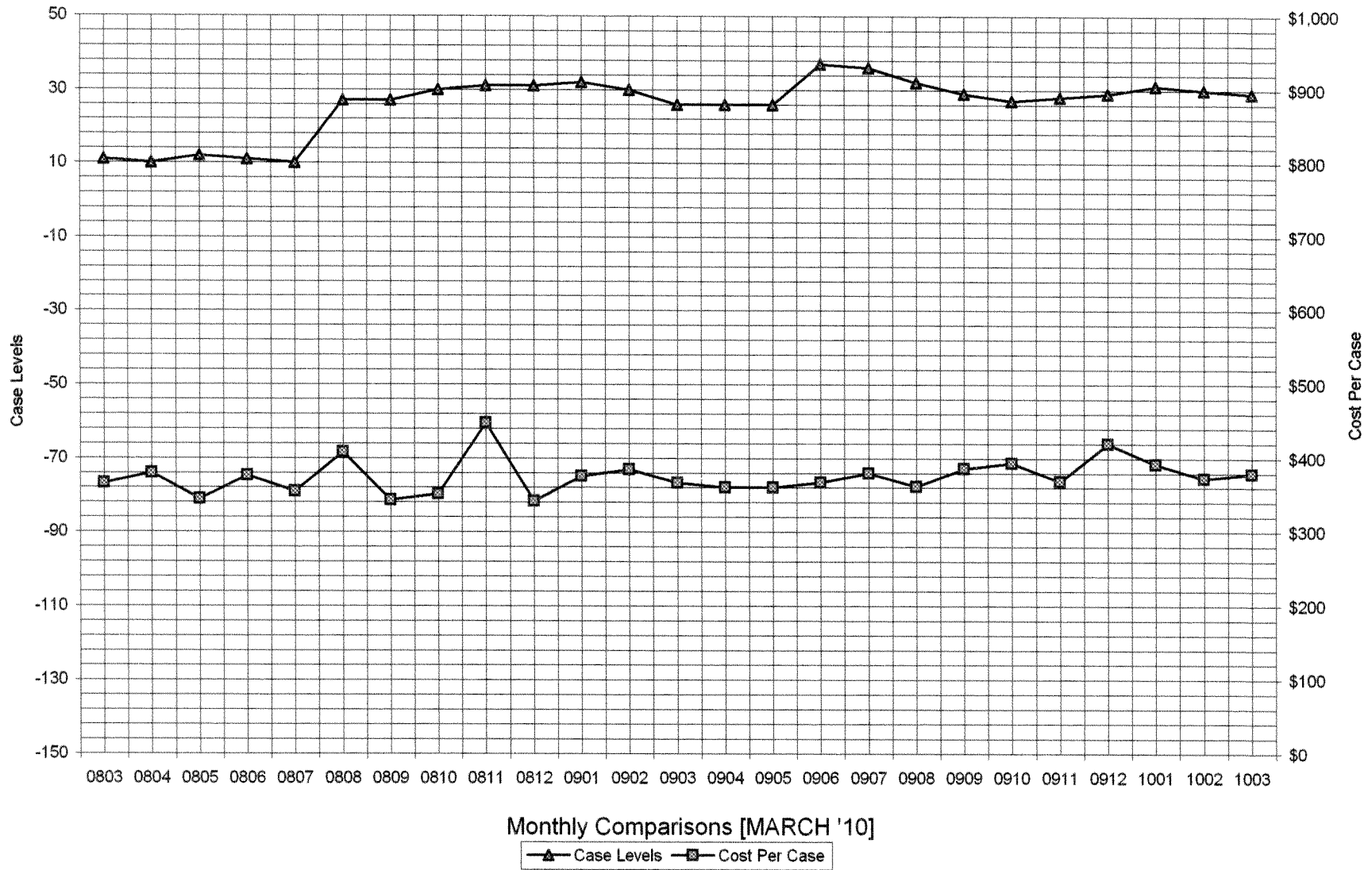
General Disclaimer Unless specifically stated otherwise, case count numbers indicated in this report(s) stem from amounts entered by local personnel into applicable ADAPT and LASER systems; therefore, all reviewers/users of this report understand that the accuracy of such case count numbers is contingent on the respective numbers entered by local personnel. Any subsequent liabilities associated with incorrect amounts being entered into the noted systems rests solely with each locality.

Effective March 2008 a difference method of calculating TANF & TANF-UP information was established.

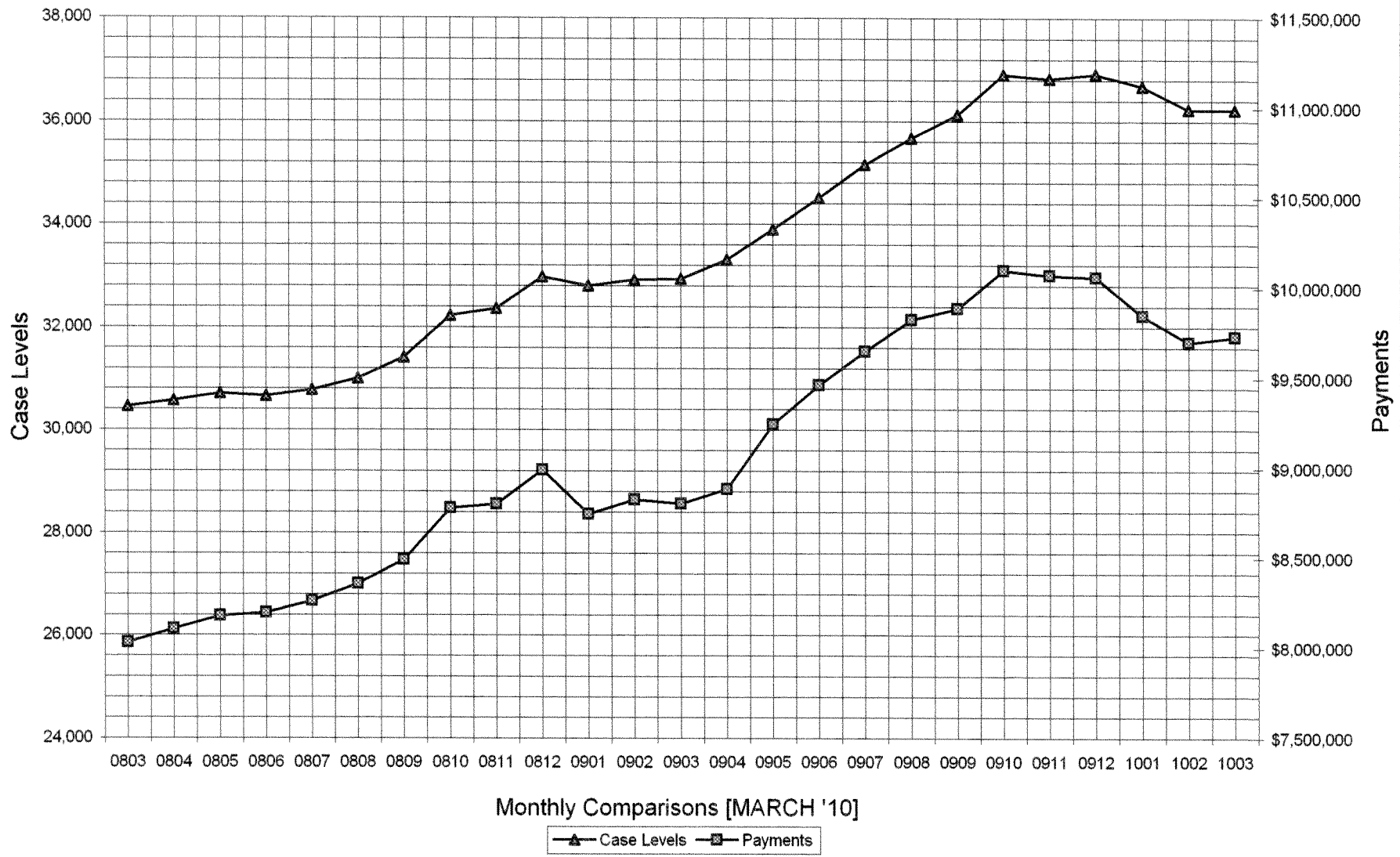
### Auxiliary Grants Programs Cases & Payments



### Adult Family Care Cases vs Cost-Per-Case



## TANF Cases & Payments



# GENERAL RELIEF Payments

