

DEPT. OF SOCIAL SERVICES-PAYMENTS AND AVERAGE GRANTS FOR WELFARE PROGRAMS

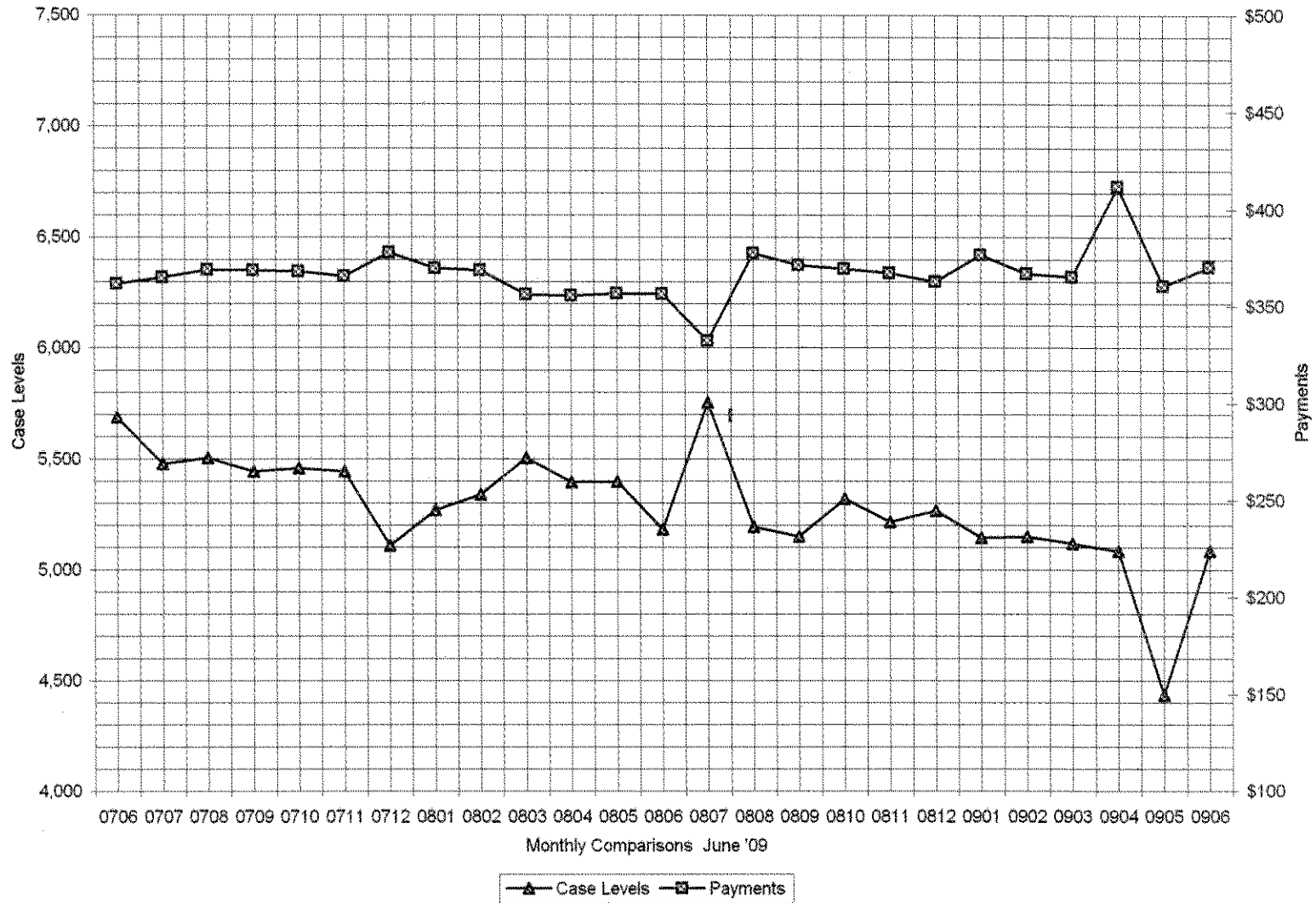
	JUNE '09	MAY '09	INC./DEC. PRI MON	% DIFF PRI MON	**YTD TOTAL	JUNE '08	INC/DEC PRIOR YR.	% INC/DEC PRIOR YR.
AUXILIARY GRANTS PROGRAMS								
RECIPIENTS	5,084	4,435	649	15%	61,911	5,182	(98)	-2%
PAYMENTS	\$1,882,972	\$1,599,665	\$283,306	18%	\$22,847,213	\$1,847,279	\$35,693	2%
AVERAGE GRANT	\$370	\$361	\$10	3%	\$369	\$356	\$14	4%
ADULT FAMILY CARE								
RECIPIENTS	37	26	11	42%	333	11	26	236%
PAYMENTS	\$13,586	\$9,366	\$4,222	45%	\$124,239	\$4,138	\$9,450	228%
AVERAGE GRANT	\$367	\$360	\$7	2%	\$373	\$376	(\$9)	-2%
TEMPORARY ASSISTANCE FOR NEEDY FAMILIES								
RECIPIENTS-TOTAL	80,243	78,559	1,684	2%	876,936	65,160	13,403	21%
TANF	72,763	71,245	1,518	2%	804,542	61,013	11,750	19%
TANF-UNEMPLOYED PARENTS	7,480	7,314	166	2%	72,396	4,147	3,333	80%
1/EMERGENCY ASSISTANCE	10	4	6	150%	118	4	6	150%
PAYMENTS-TOTAL	\$10,286,689	\$10,036,149	\$250,540	2%	\$113,729,129	\$8,664,159	\$1,622,530	19%
TANF	\$9,464,888	\$9,246,153	\$218,735	2%	\$105,653,836	\$8,195,800	\$1,268,088	15%
TANF-UNEMPLOYED PARENTS	\$819,951	\$787,472	\$32,479	4%	\$8,051,166	\$467,154	\$352,796	76%
EMERGENCY ASSISTANCE	\$1,850	\$2,523	(\$673)	-27%	\$24,137	\$1,205	\$645	54%
AVERAGE GRANT-TOTAL	\$128	\$128	\$0	0%	\$130	\$133	(\$5)	-4%
AVERAGE MONEY PAYMENTS	\$130	\$130	\$0	0%	\$131	\$134	(\$4)	-3%
AVERAGE TANF-UNEMPLOYED PARENTS	\$110	\$108	\$2	2%	\$111	\$113	(\$3)	-3%
AVERAGE EMERGENCY ASSISTANCE	\$185	\$631	(\$446)	-71%	\$205	\$301	(\$116)	-39%
TITLE IV-E								
ADOPTION SUBSIDY- RECIPIENTS	4,209	4,503	(294)	-7%	54,137	4,113	96	2%
ADOPTION SUBSIDY - PAYMENTS	\$2,455,532	\$2,730,941	(\$275,409)	-10%	\$34,175,604	\$2,361,771	\$93,761	4%
AVERAGE ADOPTION SUBSIDY	\$583	\$606	(\$23)	-4%	\$631	\$574	\$9	2%
SPECIAL NEEDS ADOPTION								
SPECIAL NEEDS ADOPTION - RECIPIENTS	4,260	4,595	(335)	-7%	51,689	3,739	521	14%
SPECIAL NEEDS ADOPTION - PAYMENTS	\$3,088,196	\$3,383,916	(\$295,719)	-9%	\$39,019,265	\$2,831,069	\$257,128	9%
AVERAGE SPECIAL NEEDS ADOPTION	\$725	\$736	(\$12)	-2%	\$755	\$757	(\$32)	-4%
GENERAL RELIEF								
PAYMENTS-TOTAL	\$401,011	\$179,137	\$221,874	124%	\$4,825,312	\$411,780	(\$10,769)	-3%

1/ INCLUDES 10 RECIPIENTS IN JUNE AND 4 IN MAY WHO ALSO REC'D MONEY PAYMENTS

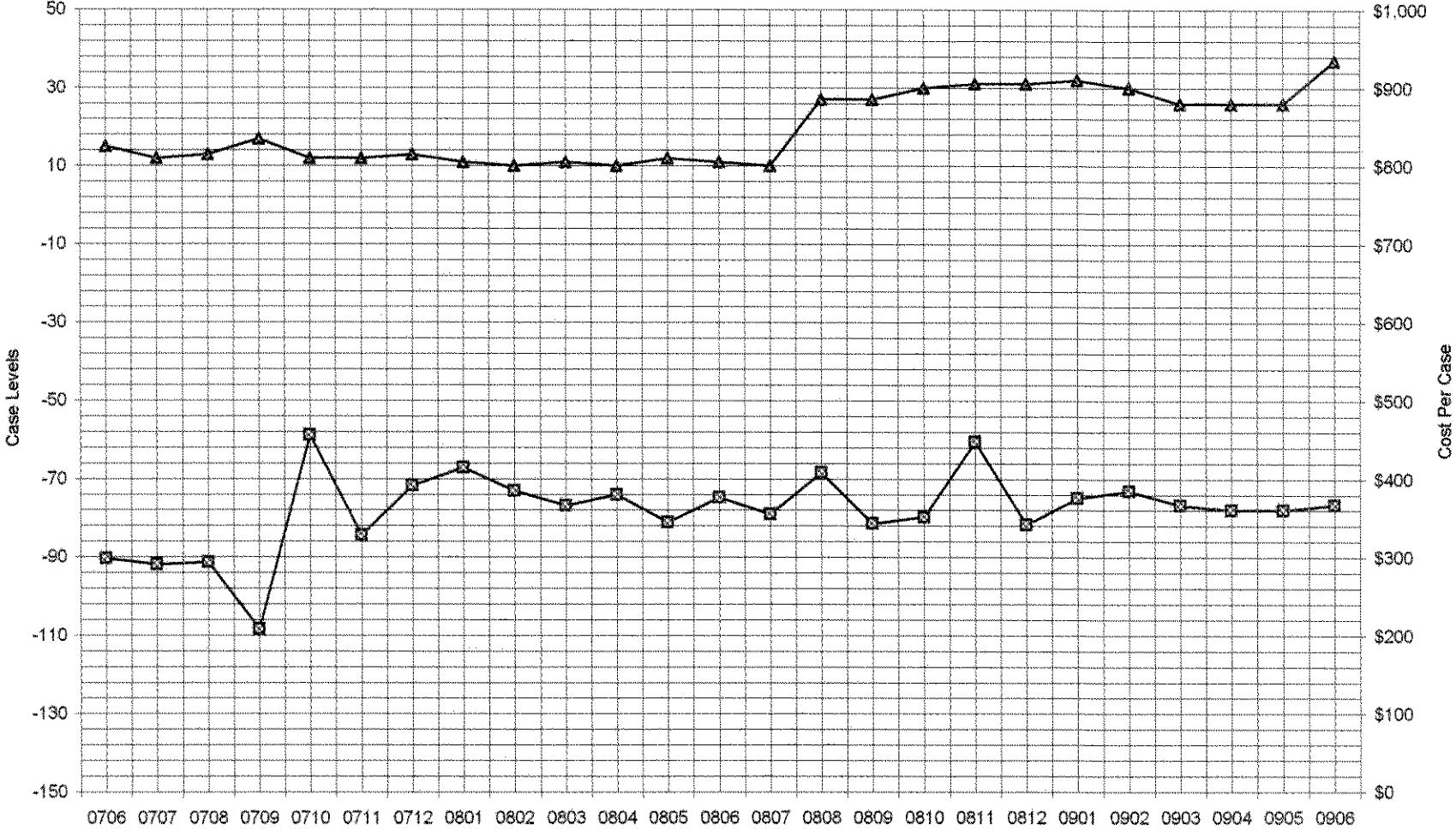
** YEAR TO DATE TOTAL: THE RECIPIENT FIGURES DO NOT REPRESENT TRUE COUNTS AS THE RECIPIENTS ARE GENERALLY THE SAME EVERY MONTH. THE YEAR TO DATE DOLLAR FIGURES ARE ACCURATE.

General Disclaimer: Unless specifically stated otherwise, case count numbers indicated in this report(s) stem from amounts entered by local personnel into applicable ADAPT and LASER systems; therefore, all reviewers/users of this report understand that the accuracy of such case count numbers is contingent on the respective numbers entered by local personnel. Any subsequent liabilities associated with incorrect amounts being entered into the noted systems rests solely with each locality. Effective March 2008 a difference method of calculating TANF & TANF-UP information was established.

Auxiliary Grants Programs Cases & Payments



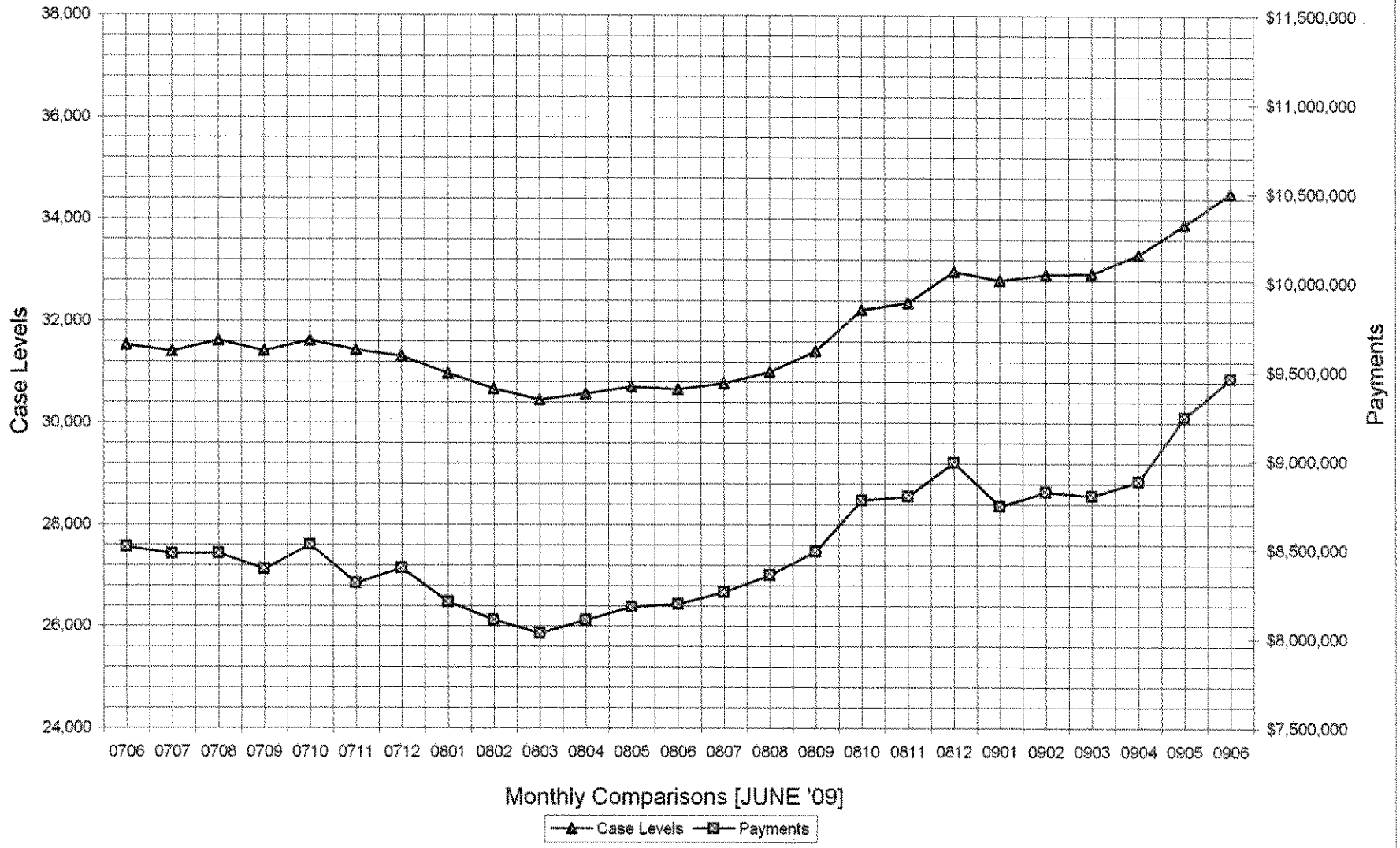
Adult Family Care Cases vs Cost-Per-Case



Monthly Comparisons [JUNE'09]

Case Levels
 Cost Per Case

TANF Cases & Payments



GENERAL RELIEF Payments

