

DEPT. OF SOCIAL SERVICES-PAYMENTS AND AVERAGE GRANTS FOR WELFARE PROGRAMS

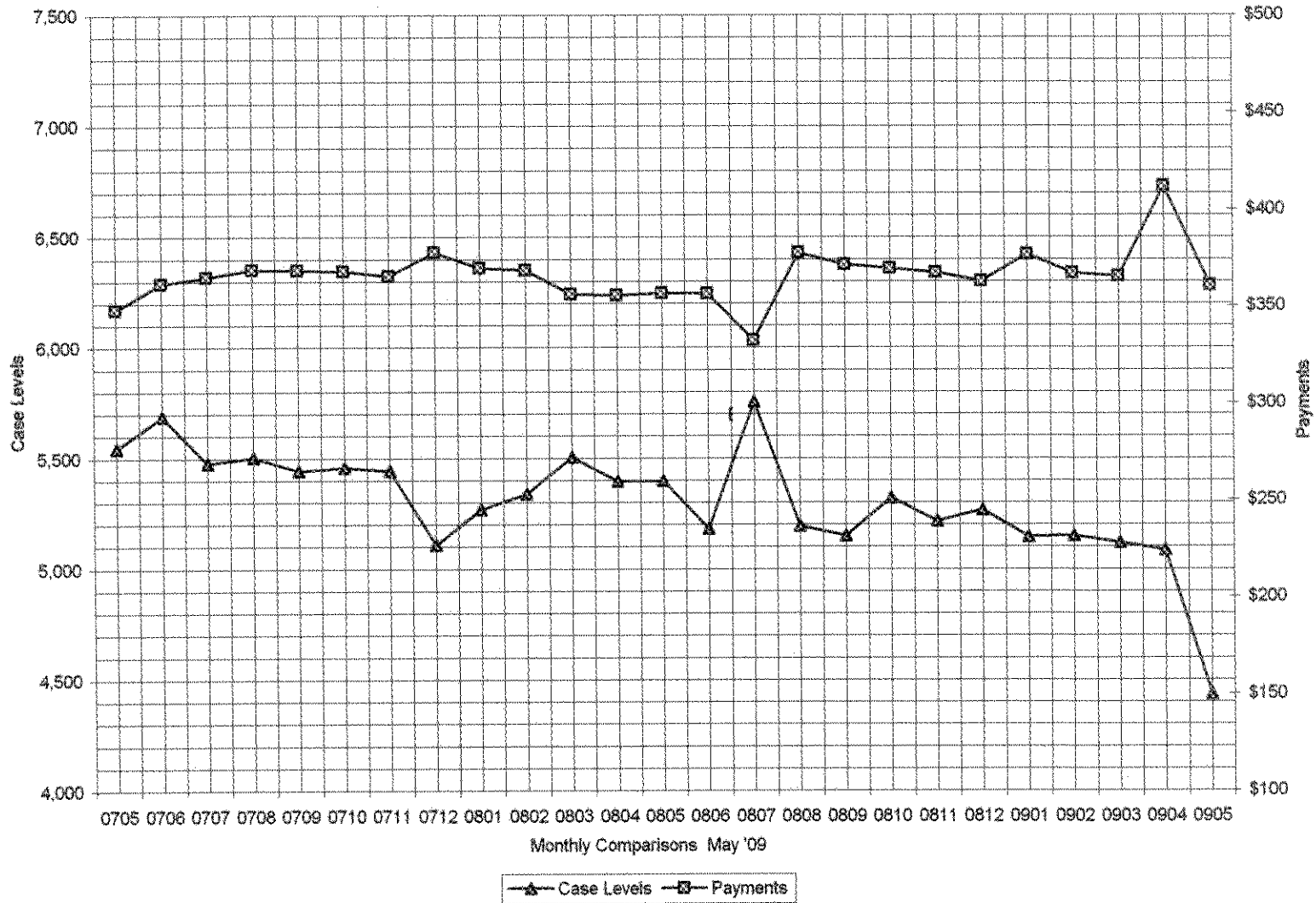
	MAY '09	APRIL '09	INC./DEC. PRI MON	% DIFF PRI MON	**YTD TOTAL	MAY '08	INC/DEC PRIOR YR.	% INC/DEC PRIOR YR.
AUXILIARY GRANTS PROGRAMS								
RECIPIENTS	4,435	5,085	(650)	-13%	56,827	5,398	(963)	-18%
PAYMENTS	\$1,599,986	\$2,094,794	(\$495,128)	-24%	\$20,964,241	\$1,925,748	(\$326,082)	-17%
AVERAGE GRANT	\$361	\$412	(\$51)	-12%	\$369	\$357	\$4	1%
ADULT FAMILY CARE								
RECIPIENTS	26	25	0	0%	296	12	14	117%
PAYMENTS	\$9,366	\$9,366	\$0	0%	\$110,651	\$4,133	\$5,234	127%
AVERAGE GRANT	\$360	\$360	\$0	0%	\$374	\$344	\$16	5%
TEMPORARY ASSISTANCE FOR NEEDY FAMILIES								
RECIPIENTS-TOTAL	78,559	76,864	1,695	2%	796,695	65,663	11,207	17%
TANF	71,245	69,641	1,604	2%	731,779	61,344	9,901	16%
TANF-UNEMPLOYED PARENTS	7,314	7,223	91	1%	64,916	4,319	2,995	69%
EMERGENCY ASSISTANCE	4	6	(2)	-33%	108	10	(6)	-60%
PAYMENTS-TOTAL	\$10,036,149	\$9,659,387	\$376,762	4%	\$103,442,440	\$8,553,207	\$1,382,942	16%
TANF	\$9,246,153	\$9,886,265	\$359,889	4%	\$98,188,948	\$8,178,470	\$1,067,683	13%
TANF-UNEMPLOYED PARENTS	\$787,472	\$771,471	\$16,001	2%	\$7,231,208	\$473,239	\$314,234	86%
EMERGENCY ASSISTANCE	\$2,523	\$1,651	\$872	53%	\$22,287	\$1,498	\$1,025	68%
AVERAGE GRANT-TOTAL	\$128	\$126	\$2	2%	\$130	\$132	(\$4)	-3%
AVERAGE MONEY PAYMENTS	\$130	\$128	\$2	2%	\$131	\$133	(\$4)	-3%
AVERAGE TANF-UNEMPLOYED PARENTS	\$108	\$107	\$1	1%	\$111	\$110	(\$2)	-2%
AVERAGE EMERGENCY ASSISTANCE	\$631	\$275	\$356	129%	\$206	\$150	\$481	321%
TITLE IV-E								
ADOPTION SUBSIDY- RECIPIENTS	4,503	4,558	(55)	-1%	49,928	4,549	(46)	-1%
ADOPTION SUBSIDY - PAYMENTS	\$2,730,941	\$2,859,464	(\$128,513)	-4%	\$31,720,072	\$2,593,177	\$137,764	5%
AVERAGE ADOPTION SUBSIDY	\$606	\$628	(\$21)	-3%	\$635	\$570	\$96	6%
SPECIAL NEEDS ADOPTION								
SPECIAL NEEDS ADOPTION - RECIPIENTS	4,595	4,457	138	3%	47,429	3,838	757	20%
SPECIAL NEEDS ADOPTION - PAYMENTS	\$3,383,916	\$3,356,088	\$27,828	1%	\$35,931,069	\$2,906,544	\$477,372	16%
AVERAGE SPECIAL NEEDS ADOPTION	\$736	\$753	(\$17)	-2%	\$758	\$757	(\$21)	-3%
GENERAL RELIEF								
PAYMENTS-TOTAL	\$179,137	\$325,847	(\$146,710)	-45%	\$4,424,301	\$414,204	(\$236,067)	-57%

1/ INCLUDES 4 RECIPIENTS IN MAY AND 6 IN APRIL WHO ALSO REC'D MONEY PAYMENTS

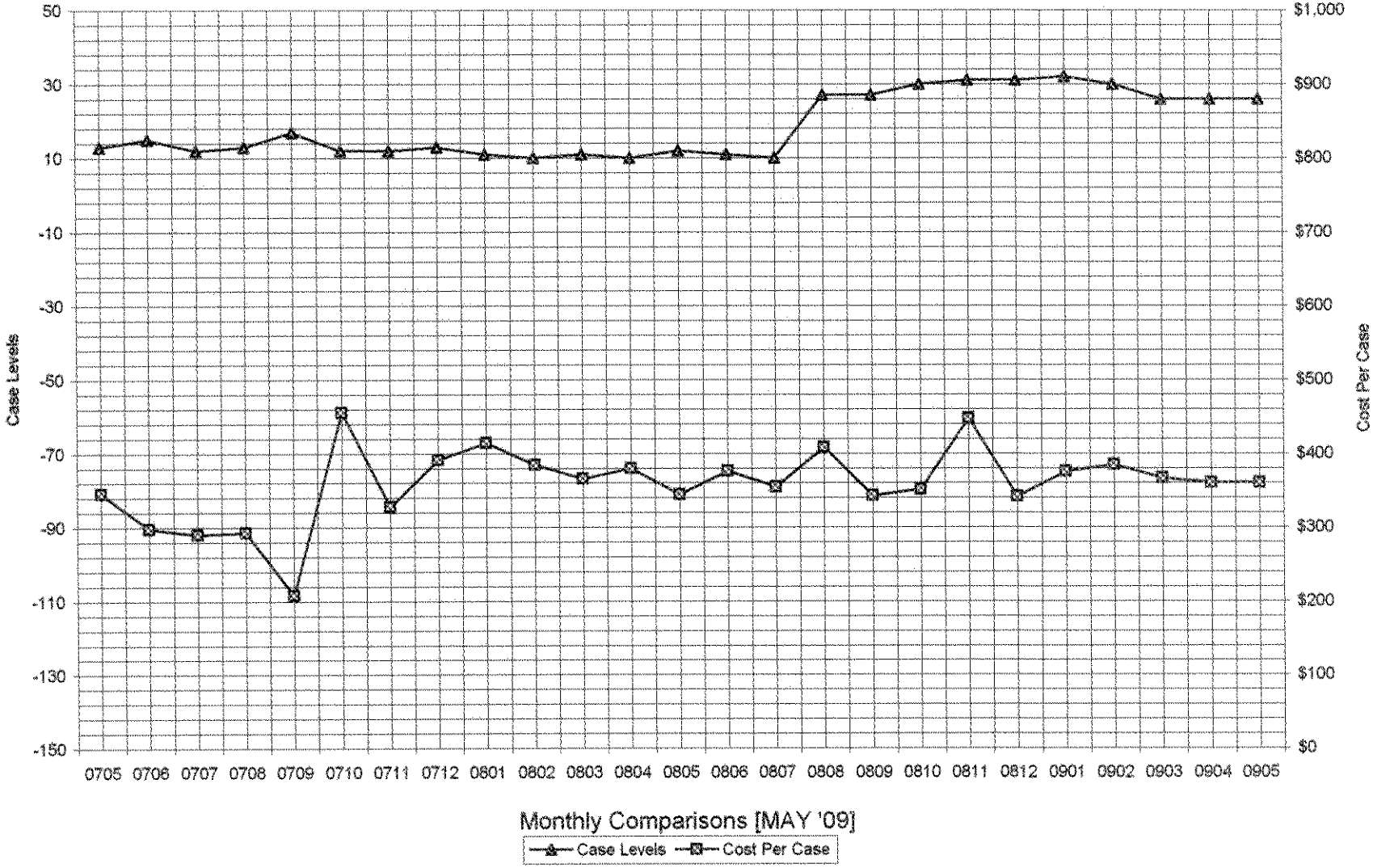
** YEAR TO DATE TOTAL: THE RECIPIENT FIGURES DO NOT REPRESENT TRUE COUNTS AS THE RECIPIENTS ARE GENERALLY THE SAME EVERY MONTH. THE YEAR TO DATE DOLLAR FIGURES ARE ACCURATE.

General Disclaimer: Unless specifically stated otherwise, case count numbers indicated in this report(s) stem from amounts entered by local personnel into applicable ADAPT and LASER systems; therefore, all reviewers/users of this report understand that the accuracy of such case count numbers is contingent on the respective numbers entered by local personnel. Any subsequent liabilities associated with incorrect amounts being entered into the noted systems rests solely with each locality. Effective March 2008 a difference method of calculating TANF & TANF-UP information was established.

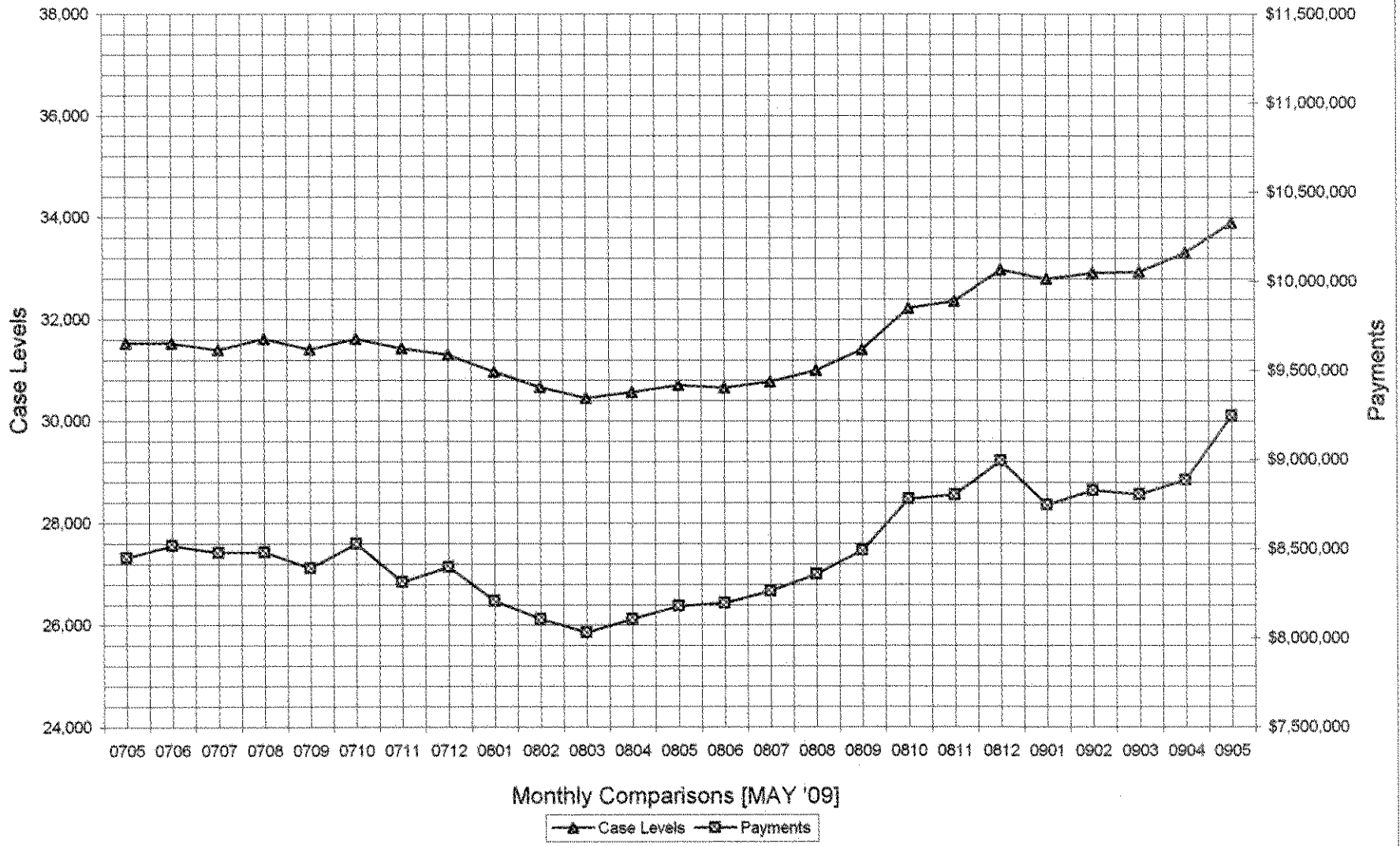
Auxiliary Grants Programs Cases & Payments



Adult Family Care Cases vs Cost-Per-Case



TANF Cases & Payments



GENERAL RELIEF Payments

