

DEPT. OF SOCIAL SERVICES-PAYMENTS AND AVERAGE GRANTS FOR WELFARE PROGRAMS

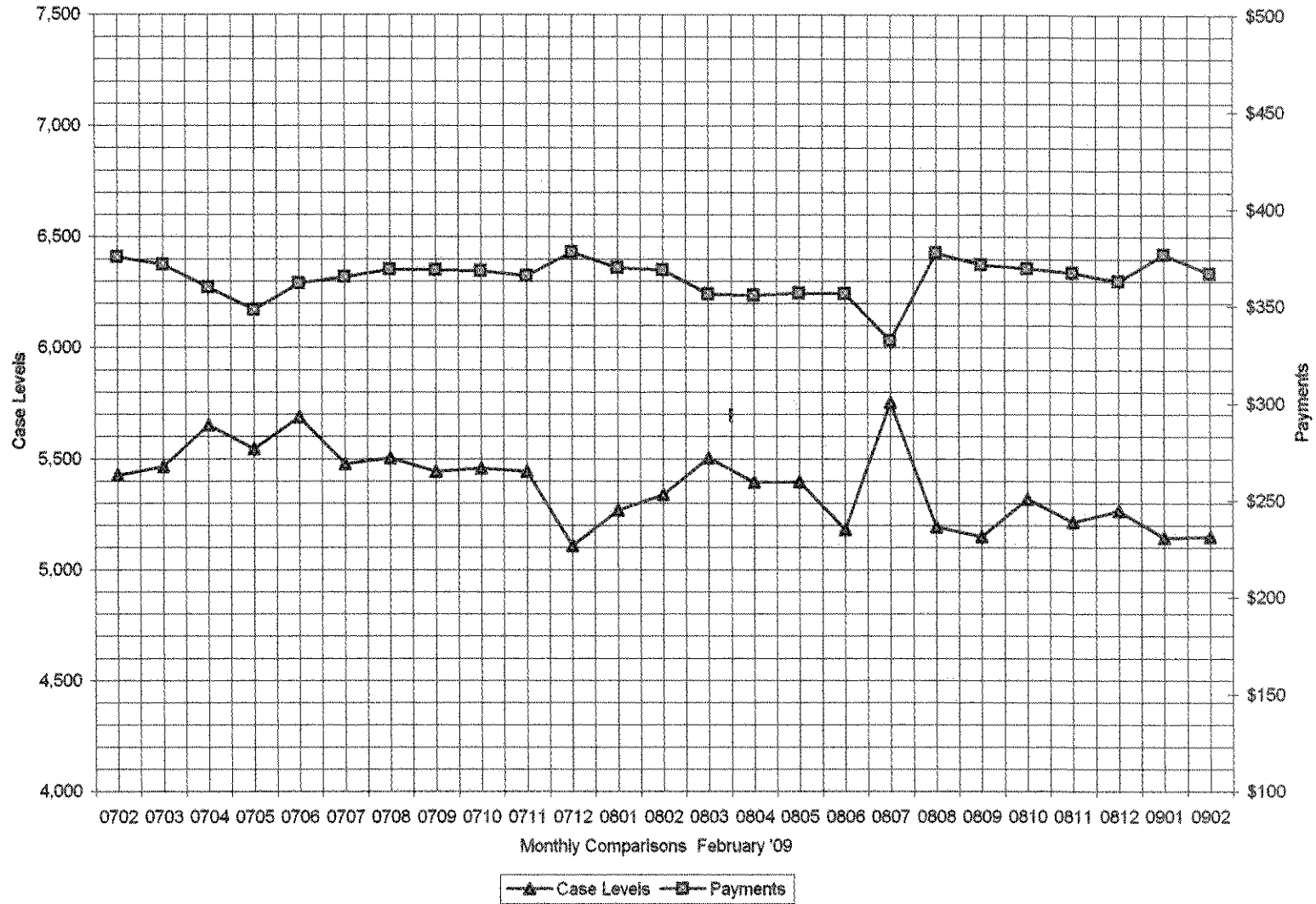
	FEBRUARY '09	JANUARY '09	INC./DEC. PRI MON	% DIFF PRI MON	**YTD TOTAL	FEBRUARY '08	INC/DEC PRIOR YR.	% INC/DEC PRIOR YR.
AUXILIARY GRANTS PROGRAMS								
RECIPIENTS	5,149	5,145	4	0%	42,189	5,338	(189)	-4%
PAYMENTS	\$1,888,838	\$1,937,148	(\$48,311)	-2%	\$15,400,539	\$1,987,436	(\$78,598)	-4%
AVERAGE GRANT	\$367	\$377	(\$10)	-3%	\$365	\$369	(\$2)	0%
ADULT FAMILY CARE								
RECIPIENTS	30	32	(2)	-6%	218	10	20	200%
PAYMENTS	\$11,539	\$12,018	(\$478)	-4%	\$82,386	\$3,844	\$7,695	200%
AVERAGE GRANT	\$385	\$376	\$9	2%	\$378	\$384	\$0	0%
TEMPORARY ASSISTANCE FOR NEEDY FAMILIES								
RECIPIENTS-TOTAL	74,637	74,081	556	1%	585,929	65,149	8,935	14%
TANF	68,110	67,828	282	0%	522,572	60,843	7,267	12%
TANF-UNEMPLOYED PARENTS	6,527	6,253	274	4%	43,357	4,306	2,221	52%
1/EMERGENCY ASSISTANCE	14	3	11	367%	84	4	10	250%
PAYMENTS-TOTAL	\$9,558,094	\$9,445,329	\$112,765	1%	\$74,155,518	\$8,598,206	\$959,888	11%
TANF	\$8,825,468	\$8,746,095	\$79,374	1%	\$68,254,226	\$8,105,345	\$720,123	9%
TANF-UNEMPLOYED PARENTS	\$729,444	\$698,087	\$31,357	4%	\$4,884,940	\$491,591	\$237,853	48%
EMERGENCY ASSISTANCE	\$3,182	\$1,147	\$2,035	177%	\$16,352	\$1,270	\$1,912	151%
AVERAGE GRANT-TOTAL	\$128	\$128	\$1	0%	\$131	\$132	(\$4)	-3%
AVERAGE MONEY PAYMENTS	\$130	\$129	\$1	0%	\$133	\$133	(\$4)	-3%
AVERAGE TANF-UNEMPLOYED PARENTS	\$112	\$112	\$0	0%	\$113	\$114	(\$2)	-2%
AVERAGE EMERGENCY ASSISTANCE	\$227	\$382	(\$155)	-41%	\$195	\$318	(\$90)	-28%
TITLE IV-E								
ADOPTION SUBSIDY- RECIPIENTS	4,532	4,068	466	11%	36,209	4,374	158	4%
ADOPTION SUBSIDY - PAYMENTS	\$3,108,391	\$2,639,130	\$469,261	18%	\$23,204,536	\$2,545,748	\$662,643	22%
AVERAGE ADOPTION SUBSIDY	\$686	\$649	\$37	6%	\$641	\$582	\$104	18%
SPECIAL NEEDS ADOPTION								
SPECIAL NEEDS ADOPTION - RECIPIENTS	4,206	4,111	95	2%	33,889	3,730	476	13%
SPECIAL NEEDS ADOPTION - PAYMENTS	\$3,162,840	\$3,243,540	(\$80,700)	-2%	\$25,911,259	\$2,857,888	\$304,953	11%
AVERAGE SPECIAL NEEDS ADOPTION	\$752	\$789	(\$37)	-5%	\$765	\$766	(\$14)	-2%
GENERAL RELIEF								
PAYMENTS-TOTAL	\$385,651	\$486,376	(\$100,725)	-21%	\$3,593,052	\$460,277	(\$74,627)	-16%

1/ INCLUDES 14 RECIPIENTS IN FEBRUARY AND 3 IN JANUARY WHO ALSO REC'D MONEY PAYMENTS

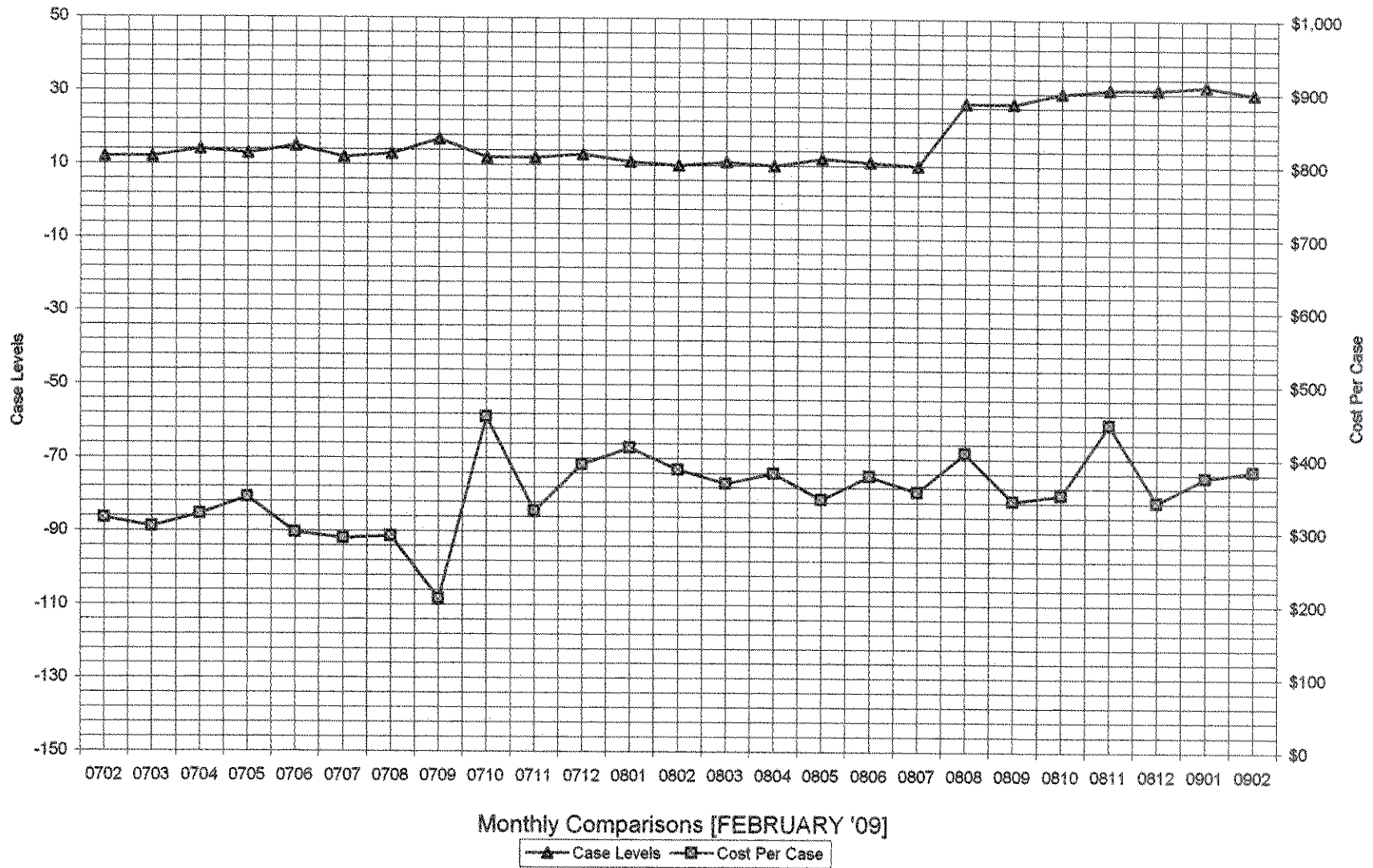
** YEAR TO DATE TOTAL: THE RECIPIENT FIGURES DO NOT REPRESENT TRUE COUNTS AS THE RECIPIENTS ARE GENERALLY THE SAME EVERY MONTH. THE YEAR TO DATE DOLLAR FIGURES ARE ACCURATE.

General Disclaimer: Unless specifically stated otherwise, case count numbers indicated in this report(s) stem from amounts entered by local personnel into applicable ADAPT and LASER systems; therefore, all reviewers/users of this report understand that the accuracy of such case count numbers is contingent on the respective numbers entered by local personnel. Any subsequent liabilities associated with incorrect amounts being entered into the noted systems rests solely with each locality. Effective March 2008 a difference method of calculating TANF & TANF-UP information was established.

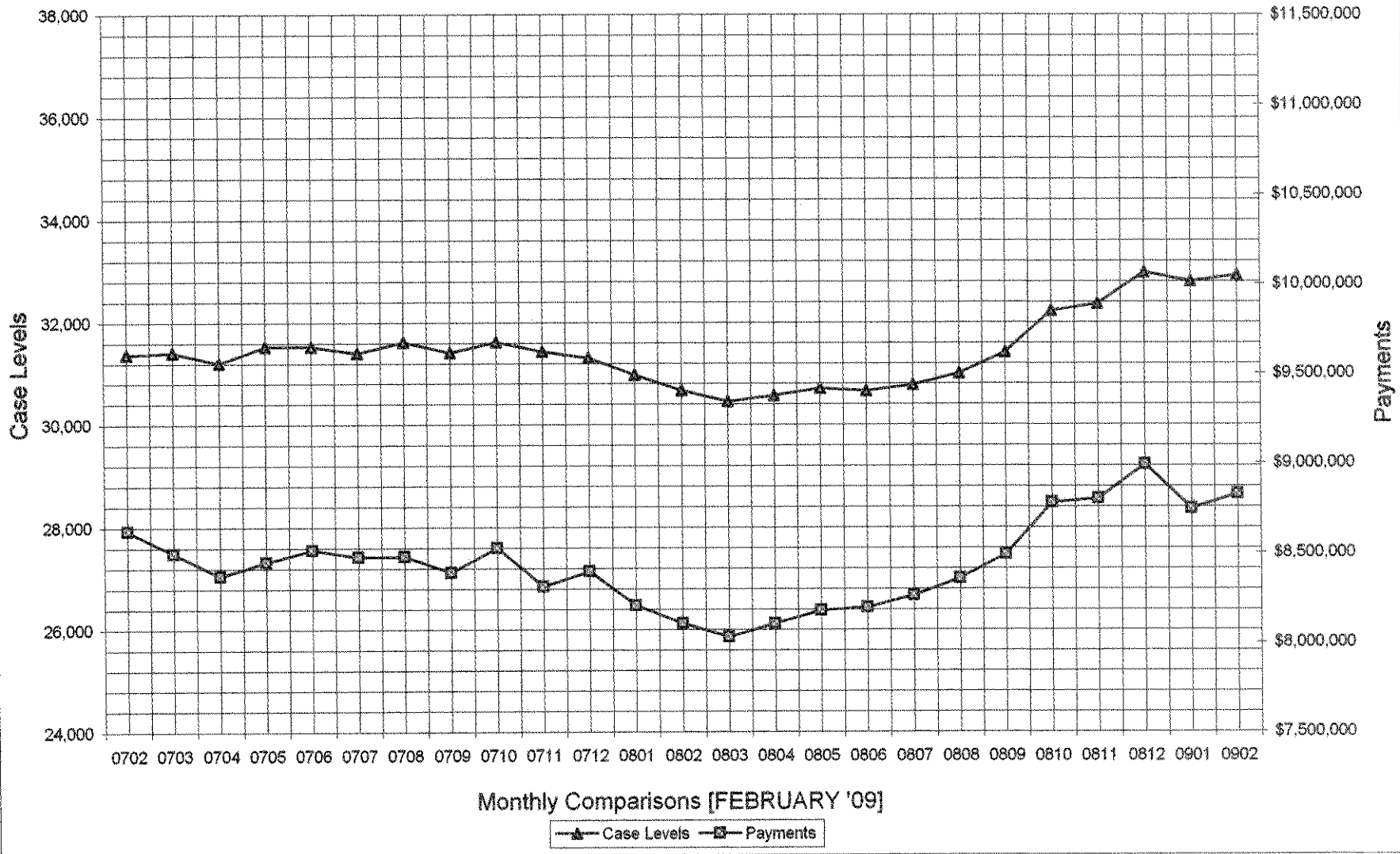
Auxiliary Grants Programs Cases & Payments



Adult Family Care Cases vs Cost-Per-Case



TANF Cases & Payments



GENERAL RELIEF Payments

