

**DEPT. OF SOCIAL SERVICES-PAYMENTS AND AVERAGE GRANTS FOR WELFARE PROGRAMS**

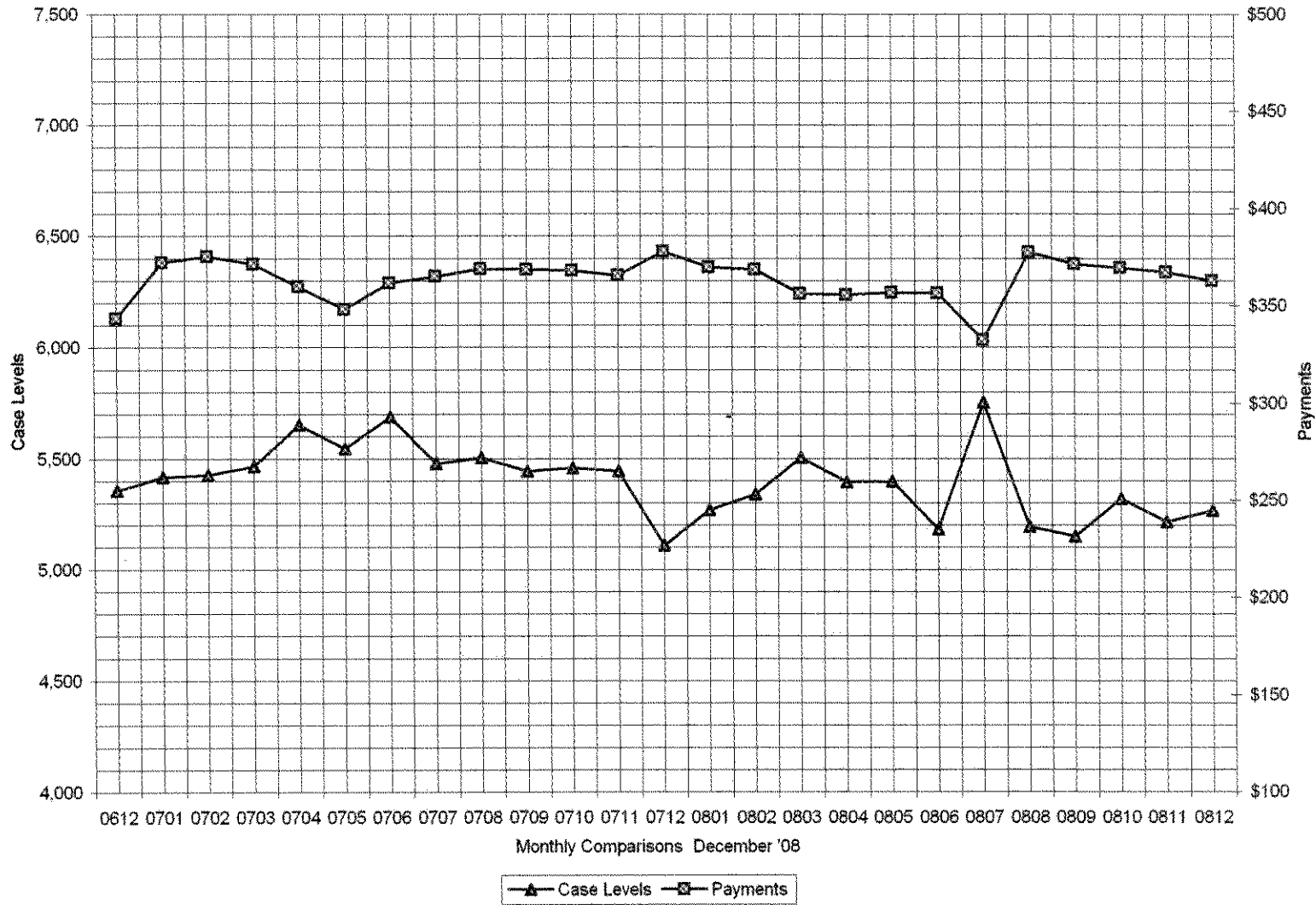
	DECEMBER '08	NOVEMBER '08	INC./DEC. PRI MON	% DIFF PRI MON	**YTD TOTAL	DECEMBER '07	INC/DEC PRIOR YR.	% INC/DEC PRIOR YR.
<b>AUXILIARY GRANTS PROGRAMS</b>								
RECIPIENTS	5,266	5,214	52	1%	31,895	5,109	157	3%
PAYMENTS	\$1,910,663	\$1,914,861	(\$4,199)	0%	\$11,574,553	\$1,929,296	(\$18,633)	-1%
AVERAGE GRANT	\$363	\$367	(\$4)	-1%	\$363	\$378	(\$15)	-4%
<b>ADULT FAMILY CARE</b>								
RECIPIENTS	31	31	0	0%	156	13	16	138%
PAYMENTS	\$10,596	\$13,864	(\$3,268)	-24%	\$58,830	\$5,086	\$5,510	108%
AVERAGE GRANT	\$342	\$447	(\$105)	-24%	\$377	\$391	(\$49)	-13%
<b>TEMPORARY ASSISTANCE FOR NEEDY FAMILIES</b>								
RECIPIENTS-TOTAL	74,399	71,626	2,773	4%	417,211	66,102	5,528	8%
TANF	68,223	66,021	2,202	3%	386,634	62,044	6,179	10%
TANF-UNEMPLOYED PARENTS	6,176	5,605	571	10%	30,577	4,058	2,118	52%
1/EMERGENCY ASSISTANCE	6	4	2	50%	67	10	(4)	-40%
PAYMENTS-TOTAL	\$9,709,809	\$9,443,177	\$266,631	3%	\$55,152,085	\$8,867,926	\$841,882	9%
TANF	\$8,991,317	\$8,802,518	\$188,800	2%	\$51,682,663	\$8,409,065	\$682,252	7%
TANF-UNEMPLOYED PARENTS	\$716,658	\$638,722	\$77,936	12%	\$3,457,409	\$455,971	\$260,687	57%
EMERGENCY ASSISTANCE	\$1,833	\$1,937	(\$104)	-5%	\$12,023	\$2,890	(\$1,057)	-37%
AVERAGE GRANT-TOTAL	\$131	\$132	(\$1)	-1%	\$132	\$134	(\$4)	-3%
AVERAGE MONEY PAYMENTS	\$132	\$133	(\$2)	-1%	\$134	\$136	(\$4)	-3%
AVERAGE TANF-UNEMPLOYED PARENTS	\$116	\$114	\$2	2%	\$113	\$112	\$4	3%
AVERAGE EMERGENCY ASSISTANCE	\$306	\$484	(\$179)	-37%	\$179	\$289	\$17	6%
<b>TITLE IV-E</b>								
ADOPTION SUBSIDY- RECIPIENTS	4,578	4,126	452	11%	27,611	4,299	279	6%
ADOPTION SUBSIDY - PAYMENTS	\$3,126,229	\$2,556,854	\$569,375	22%	\$17,457,016	\$2,424,780	\$701,449	29%
AVERAGE ADOPTION SUBSIDY	\$683	\$620	\$63	10%	\$632	\$564	\$119	21%
<b>SPECIAL NEEDS ADOPTION</b>								
SPECIAL NEEDS ADOPTION - RECIPIENTS	4,100	4,294	(194)	-5%	25,572	3,742	358	10%
SPECIAL NEEDS ADOPTION - PAYMENTS	\$3,551,729	\$2,887,550	\$664,178	23%	\$19,504,879	\$2,767,139	\$704,589	28%
AVERAGE SPECIAL NEEDS ADOPTION	\$866	\$672	\$194	29%	\$763	\$739	\$127	17%
<b>GENERAL RELIEF</b>								
PAYMENTS-TOTAL	\$451,837	\$443,392	\$8,445	2%	\$2,721,026	\$453,259	(\$1,422)	0%

1/ INCLUDES 6 RECIPIENTS IN DECEMBER AND 4 IN NOVEMBER WHO ALSO REC'D MONEY PAYMENTS

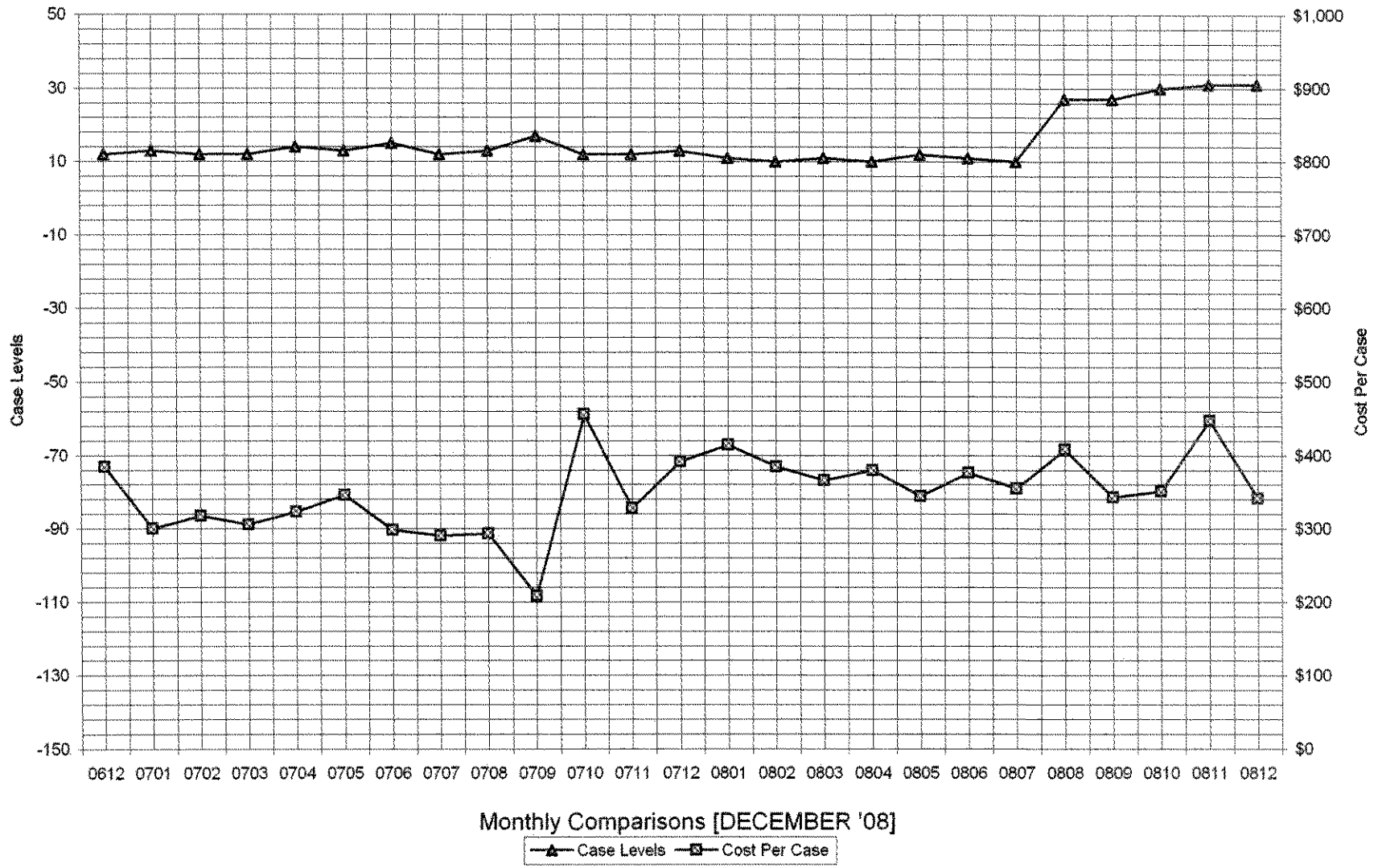
\*\* YEAR TO DATE TOTAL: THE RECIPIENT FIGURES DO NOT REPRESENT TRUE COUNTS AS THE RECIPIENTS ARE GENERALLY THE SAME EVERY MONTH. THE YEAR TO DATE DOLLAR FIGURES ARE ACCURATE.

General Disclaimer: Unless specifically stated otherwise, case count numbers indicated in this report(s) stem from amounts entered by local personnel into applicable ADAPT and LASER systems; therefore, all reviewers/users of this report understand that the accuracy of such case count numbers is contingent on the respective numbers entered by local personnel. Any subsequent liabilities associated with incorrect amounts being entered into the noted systems rests solely with each locality. Effective March 2008 a difference method of calculating TANF & TANF-UP information was established.

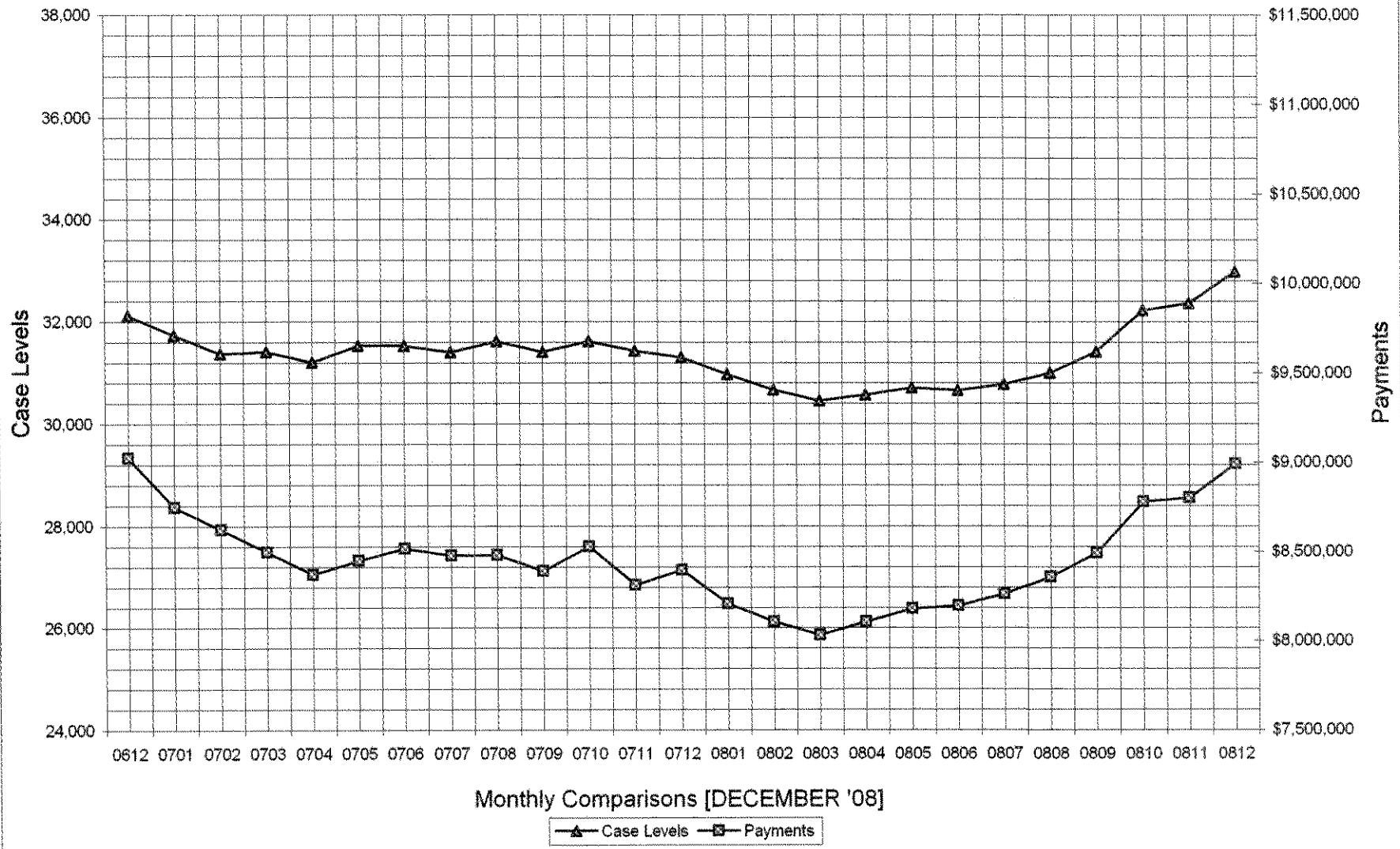
### Auxiliary Grants Programs Cases & Payments



### Adult Family Care Cases vs Cost-Per-Case



## TANF Cases & Payments



### GENERAL RELIEF Payments

