

**DEPT. OF SOCIAL SERVICES-PAYMENTS AND AVERAGE GRANTS FOR WELFARE PROGRAMS**

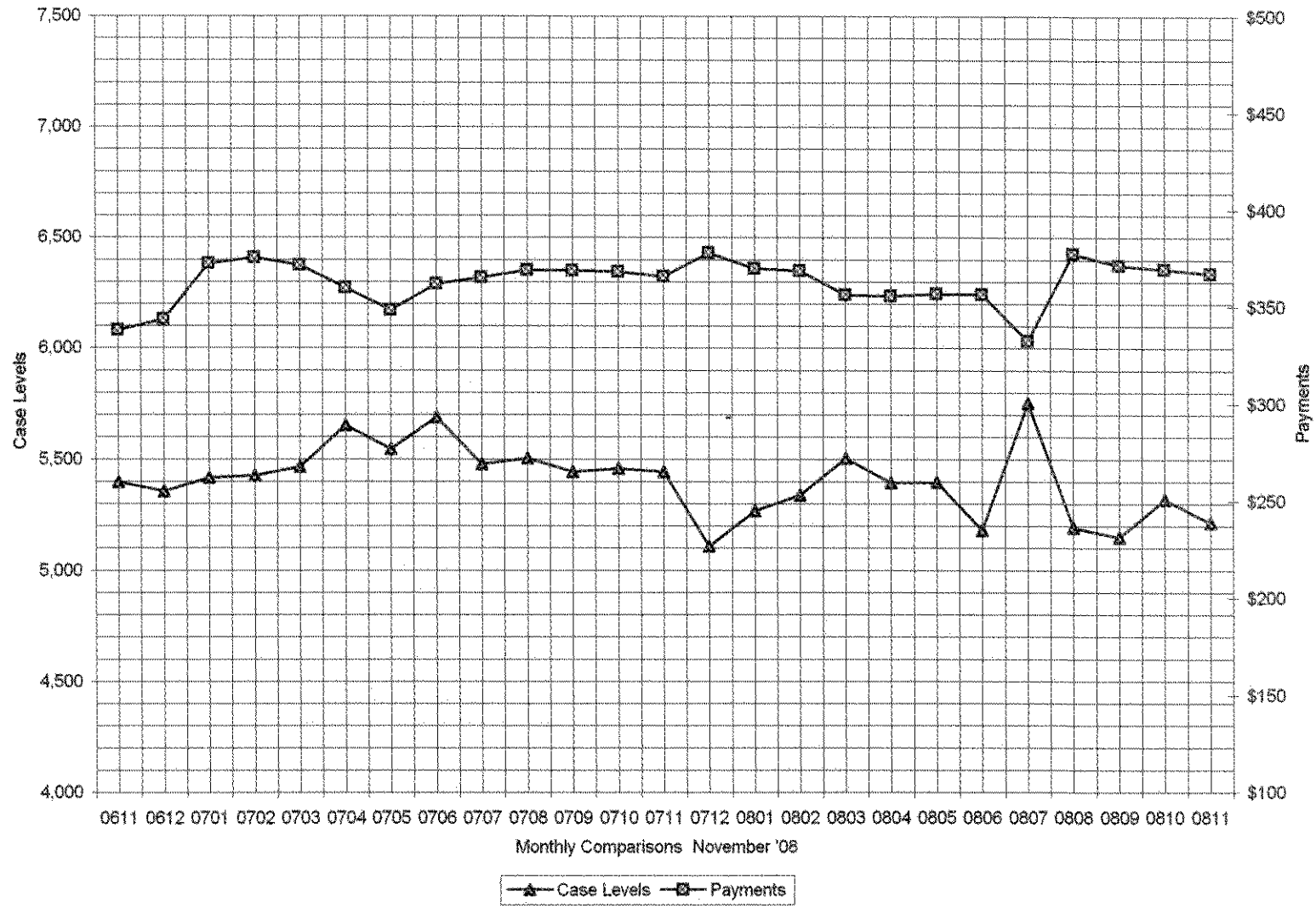
	NOVEMBER '08	OCTOBER '08	INC./DEC. PRI MON	% DIFF PRI MON	**YTD TOTAL	NOVEMBER '07	INC/DEC PRIOR YR.	% INC/DEC PRIOR YR.
<b>AUXILIARY GRANTS PROGRAMS</b>								
RECIPIENTS	5,214	5,320	(106)	-2%	26,629	5,443	(229)	-4%
PAYMENTS	\$1,914,861	\$1,965,510	(\$50,648)	-3%	\$9,663,891	\$1,969,352	(\$74,491)	-4%
AVERAGE GRANT	\$367	\$369	(\$2)	-1%	\$363	\$365	\$2	0%
<b>ADULT FAMILY CARE</b>								
RECIPIENTS	31	30	1	3%	125	12	19	156%
PAYMENTS	\$13,864	\$10,537	\$3,327	32%	\$48,234	\$3,931	\$9,933	253%
AVERAGE GRANT	\$447	\$351	\$96	27%	\$386	\$328	\$120	37%
<b>TEMPORARY ASSISTANCE FOR NEEDY FAMILIES</b>								
RECIPIENTS-TOTAL	71,628	70,898	728	1%	342,812	66,731	4,185	6%
TANF	66,021	65,546	475	1%	318,411	62,561	3,460	6%
TANF-UNEMPLOYED PARENTS	5,605	5,352	253	5%	24,401	4,170	1,435	34%
1/EMERGENCY ASSISTANCE	4	18	(14)	-78%	61	8	(4)	-50%
PAYMENTS-TOTAL	\$9,443,177	\$9,385,706	\$57,471	1%	\$45,442,267	\$8,782,419	\$660,759	8%
TANF	\$8,802,518	\$8,776,284	\$24,233	0%	\$42,691,345	\$8,313,294	\$489,223	6%
TANF-UNEMPLOYED PARENTS	\$638,722	\$606,470	\$32,253	5%	\$2,740,751	\$465,714	\$173,008	37%
EMERGENCY ASSISTANCE	\$1,937	\$952	\$985	103%	\$10,190	\$3,410	(\$1,473)	-43%
AVERAGE GRANT-TOTAL	\$132	\$132	(\$1)	0%	\$133	\$132	\$0	0%
AVERAGE MONEY PAYMENTS	\$133	\$134	(\$1)	0%	\$134	\$133	\$0	0%
AVERAGE TANF-UNEMPLOYED PARENTS	\$114	\$113	\$1	1%	\$112	\$112	\$2	2%
AVERAGE EMERGENCY ASSISTANCE	\$484	\$53	\$431	816%	\$167	\$426	\$58	14%
<b>TITLE IV-E</b>								
ADOPTION SUBSIDY- RECIPIENTS	4,126	4,655	(529)	-11%	23,033	4,299	(173)	-4%
ADOPTION SUBSIDY - PAYMENTS	\$2,556,854	\$3,001,292	(\$444,438)	-15%	\$14,330,786	\$2,424,780	\$132,074	5%
AVERAGE ADOPTION SUBSIDY	\$620	\$645	(\$25)	-4%	\$622	\$564	\$56	10%
<b>SPECIAL NEEDS ADOPTION</b>								
SPECIAL NEEDS ADOPTION - RECIPIENTS	4,294	4,197	97	2%	21,472	3,742	552	15%
SPECIAL NEEDS ADOPTION - PAYMENTS	\$2,867,550	\$3,298,229	(\$410,679)	-12%	\$15,953,160	\$2,767,139	\$120,411	4%
AVERAGE SPECIAL NEEDS ADOPTION	\$672	\$786	(\$113)	-14%	\$743	\$739	(\$67)	-9%
<b>GENERAL RELIEF</b>								
PAYMENTS-TOTAL	\$443,392	\$445,879	(\$2,488)	-1%	\$2,269,189	\$453,259	(\$9,868)	-2%

1/ INCLUDES 4 RECIPIENTS IN NOVEMBER AND 18 IN OCTOBER WHO ALSO REC'D MONEY PAYMENTS

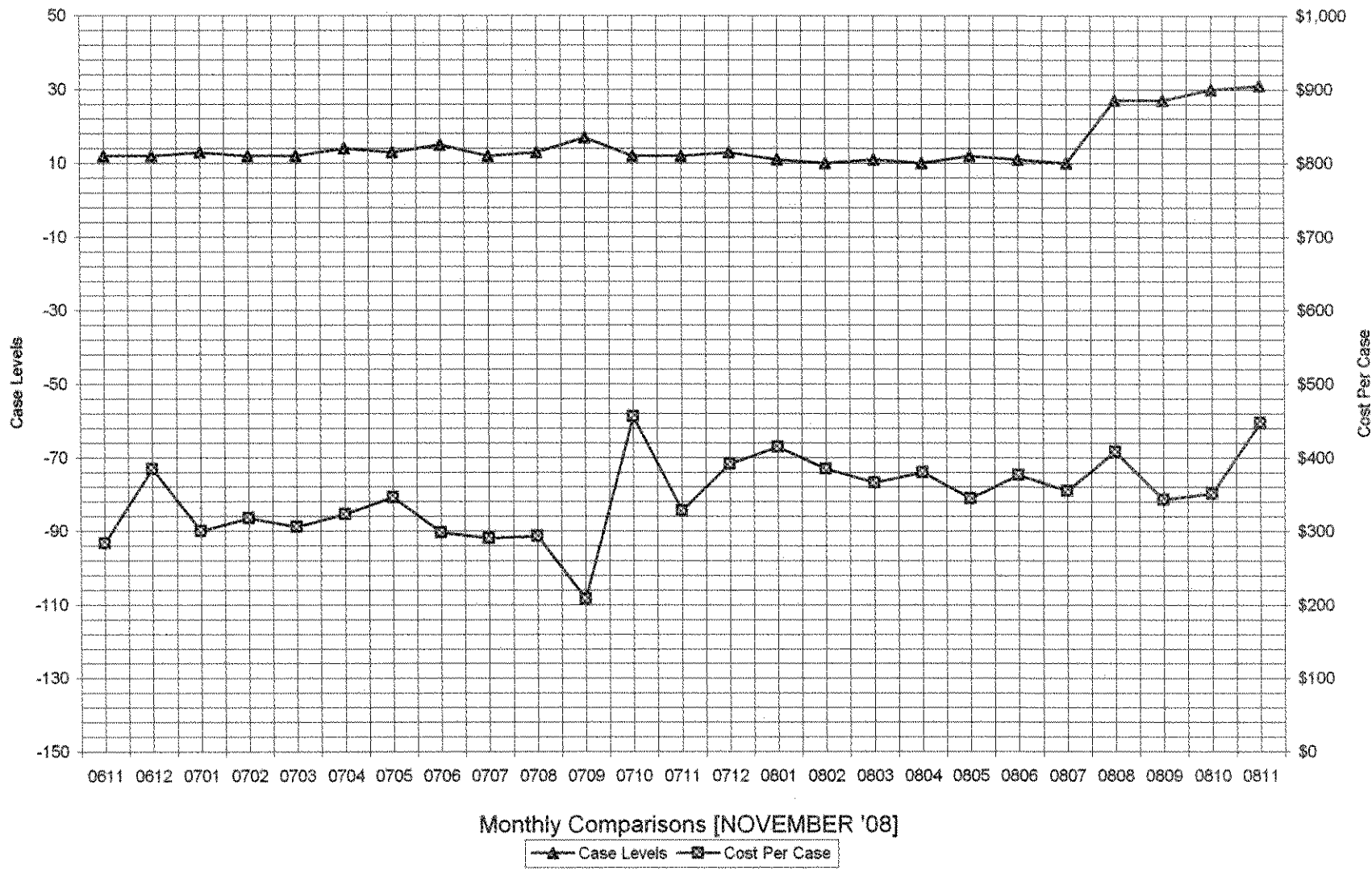
\*\* YEAR TO DATE TOTAL: THE RECIPIENT FIGURES DO NOT REPRESENT TRUE COUNTS AS THE RECIPIENTS ARE GENERALLY THE SAME EVERY MONTH. THE YEAR TO DATE DOLLAR FIGURES ARE ACCURATE.

General Disclaimer: Unless specifically stated otherwise, case count numbers indicated in this report(s) stem from amounts entered by local personnel into applicable ADAPT and LASER systems; therefore, all reviewers/users of this report understand that the accuracy of such case count numbers is contingent on the respective numbers entered by local personnel. Any subsequent liabilities associated with incorrect amounts being entered into the noted systems rests solely with each locality. Effective March 2008 a difference method of calculating TANF & TANF-UP information was established.

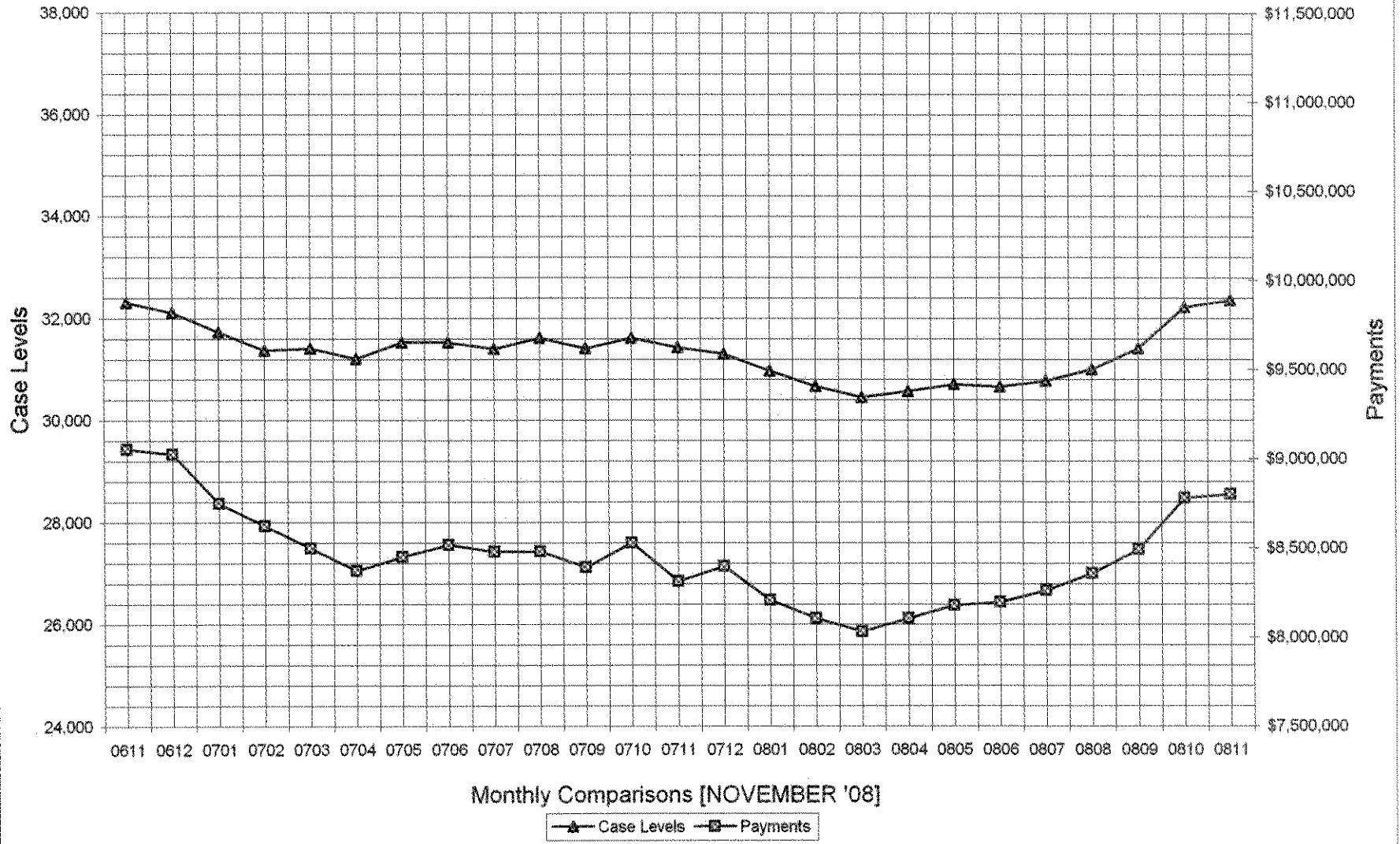
### Auxiliary Grants Programs Cases & Payments



### Adult Family Care Cases vs Cost-Per-Case



# TANF Cases & Payments



# GENERAL RELIEF Payments

