

**DEPT. OF SOCIAL SERVICES-PAYMENTS AND AVERAGE GRANTS FOR WELFARE PROGRAMS**

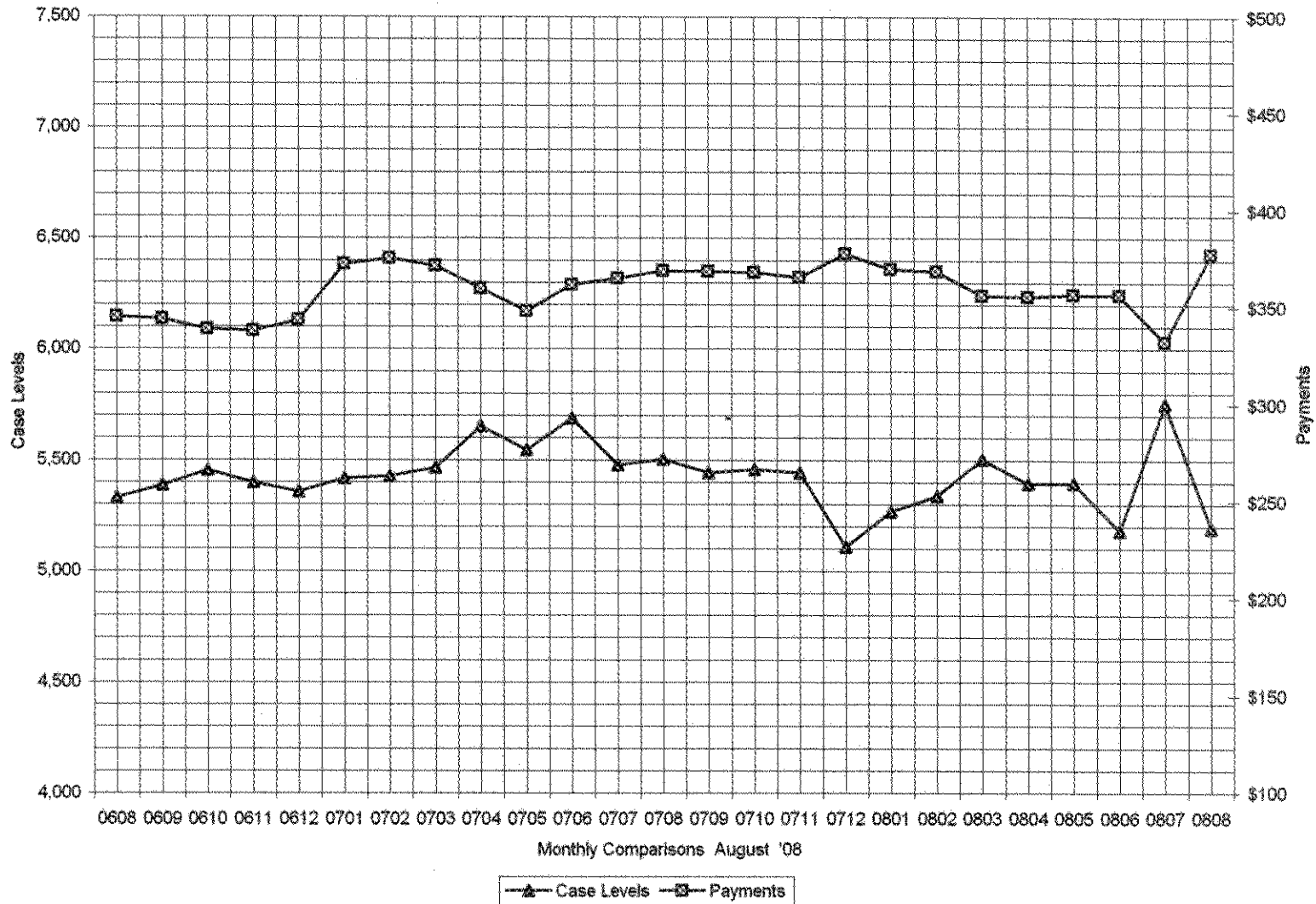
	AUGUST '08	JULY '08	INC./DEC. PRI MON	% DIFF PRI MON	**YTD TOTAL	AUGUST '07	INC/DEC PRIOR YR.	% INC/DEC PRIOR YR.
<b>AUXILIARY GRANTS PROGRAMS</b>								
RECIPIENTS	5,193	5,753	560	10%	10,946	5,503	250	5%
PAYMENTS	\$1,959,810	\$1,911,105	(\$48,705)	-3%	\$3,870,915	\$2,030,398	(\$119,293)	-6%
AVERAGE GRANT	\$377	\$332	(\$45)	-14%	\$354	\$369	(\$37)	-10%
<b>ADULT FAMILY CARE</b>								
RECIPIENTS	27	10	17	170%	37	13	(3)	-23%
PAYMENTS	\$11,016	\$3,550	\$7,466	210%	\$14,568	\$3,811	(\$262)	-7%
AVERAGE GRANT	\$408	\$355	\$53	15%	\$394	\$293	\$115	39%
<b>TEMPORARY ASSISTANCE FOR NEEDY FAMILIES</b>								
RECIPIENTS-TOTAL	65,843	65,468	1,375	2%	132,311	67,413	(1,629)	-3%
TANF	62,411	61,216	1,195	2%	123,627	63,188	(1,972)	-3%
TANF-UNEMPLOYED PARENTS	4,432	4,252	180	4%	8,684	4,225	27	1%
1/EMERGENCY ASSISTANCE	10	16	(6)	-38%	26	(1)	17	-1700%
PAYMENTS-TOTAL	\$8,837,935	\$8,740,214	\$97,721	1%	\$17,578,149	\$8,967,277	(\$227,063)	-3%
TANF	\$8,357,182	\$8,261,716	\$95,463	1%	\$16,618,900	\$8,480,368	(\$218,650)	-3%
TANF-UNEMPLOYED PARENTS	\$478,525	\$477,045	\$1,480	0%	\$955,570	\$485,764	(\$8,719)	-2%
EMERGENCY ASSISTANCE	\$2,228	\$1,451	\$777	54%	\$3,679	\$1,145	\$306	27%
AVERAGE GRANT-TOTAL	\$132	\$134	(\$1)	-1%	\$133	\$133	\$0	0%
AVERAGE MONEY PAYMENTS	\$134	\$135	(\$1)	-1%	\$134	\$134	\$1	1%
AVERAGE TANF-UNEMPLOYED PARENTS	\$108	\$112	(\$4)	-4%	\$110	\$115	(\$3)	-2%
AVERAGE EMERGENCY ASSISTANCE	\$223	\$91	\$132	31%	\$141	(\$1,145)	\$1,236	-108%
<b>TITLE IV-E</b>								
ADOPTION SUBSIDY- RECIPIENTS	4,579	5,294	(715)	-14%	9,873	4,442	652	19%
ADOPTION SUBSIDY - PAYMENTS	\$2,968,922	\$2,927,331	\$41,590	1%	\$5,896,253	\$2,392,274	\$535,057	22%
AVERAGE ADOPTION SUBSIDY	\$646	\$553	\$95	17%	\$597	\$539	\$14	3%
<b>SPECIAL NEEDS ADOPTION</b>								
SPECIAL NEEDS ADOPTION - RECIPIENTS	4,184	4,822	(638)	-13%	9,006	3,914	908	23%
SPECIAL NEEDS ADOPTION - PAYMENTS	\$3,262,756	\$3,340,764	(\$78,008)	-2%	\$6,603,521	\$2,952,591	\$389,173	13%
AVERAGE SPECIAL NEEDS ADOPTION	\$780	\$693	\$97	13%	\$733	\$754	(\$62)	-8%
<b>GENERAL RELIEF</b>								
PAYMENTS-TOTAL	\$429,508	\$449,062	(\$19,554)	-4%	\$878,570	\$448,795	\$267	0%

1/ INCLUDES 10 RECIPIENTS IN AUGUST AND 16 IN JULY WHO ALSO REC'D MONEY PAYMENTS

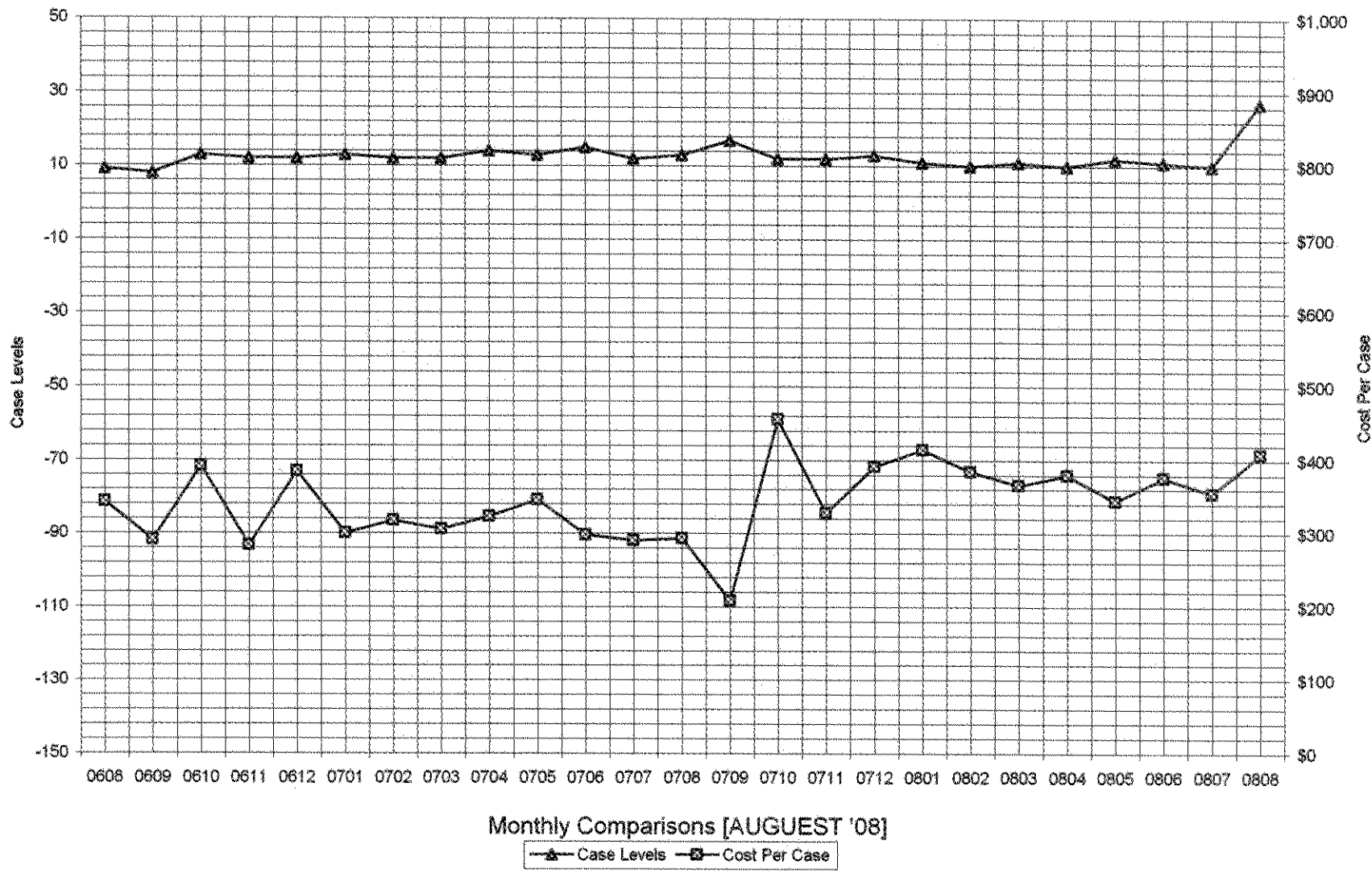
\*\* YEAR TO DATE TOTAL: THE RECIPIENT FIGURES DO NOT REPRESENT TRUE COUNTS AS THE RECIPIENTS ARE GENERALLY THE SAME EVERY MONTH. THE YEAR TO DATE DOLLAR FIGURES ARE ACCURATE.

General Disclaimer: Unless specifically stated otherwise, case count numbers indicated in this report(s) stem from amounts entered by local personnel into applicable ADAPT and LASER systems; therefore, all reviewers/users of this report understand that the accuracy of such case count numbers is contingent on the respective numbers entered by local personnel. Any subsequent liabilities associated with incorrect amounts being entered into the noted systems rests solely with each locality. Effective March 2008 a difference method of calculating TANF & TANF-UP information was established.

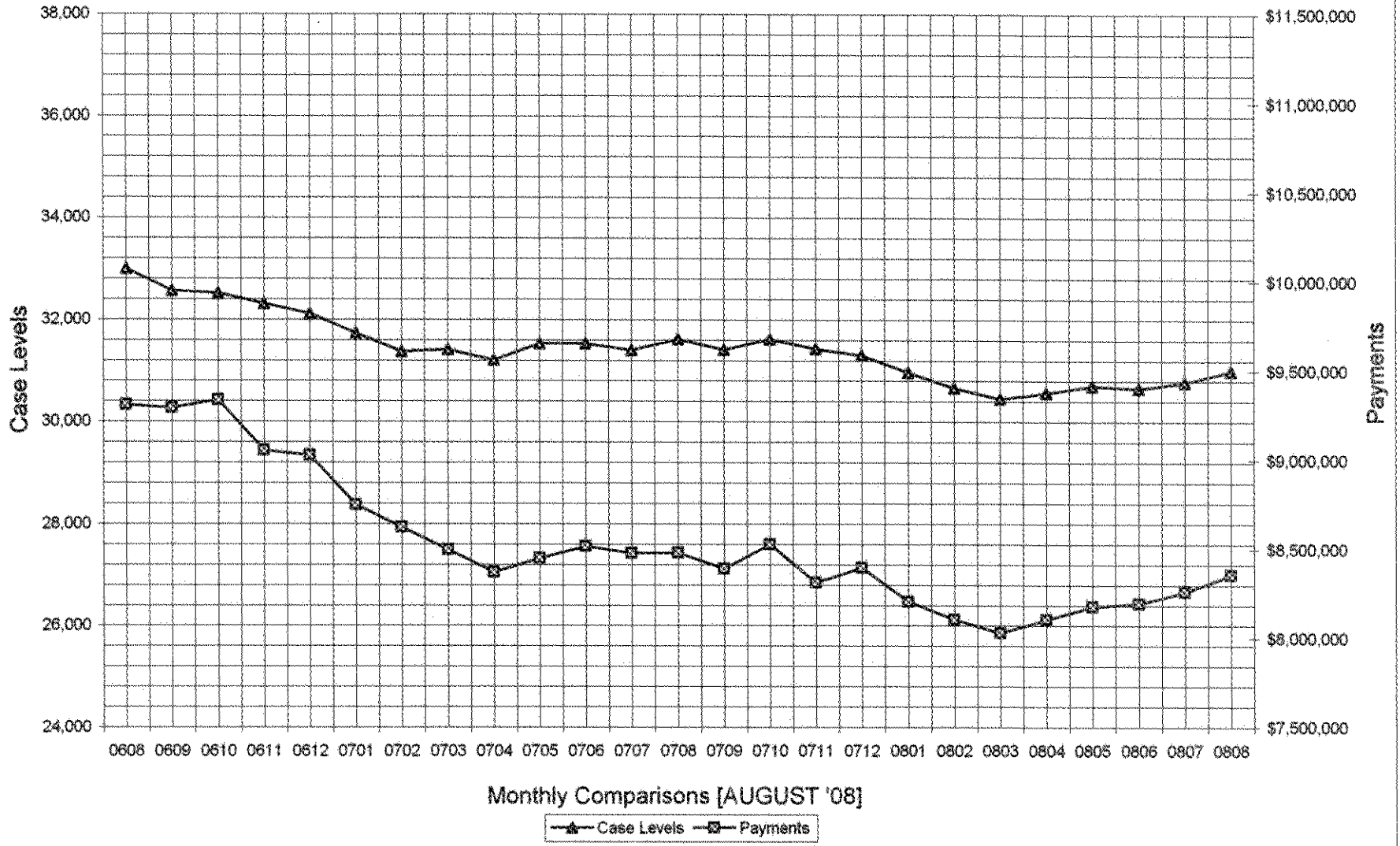
### Auxiliary Grants Programs Cases & Payments



### Adult Family Care Cases vs Cost-Per-Case



### TANF Cases & Payments



### GENERAL RELIEF Payments

